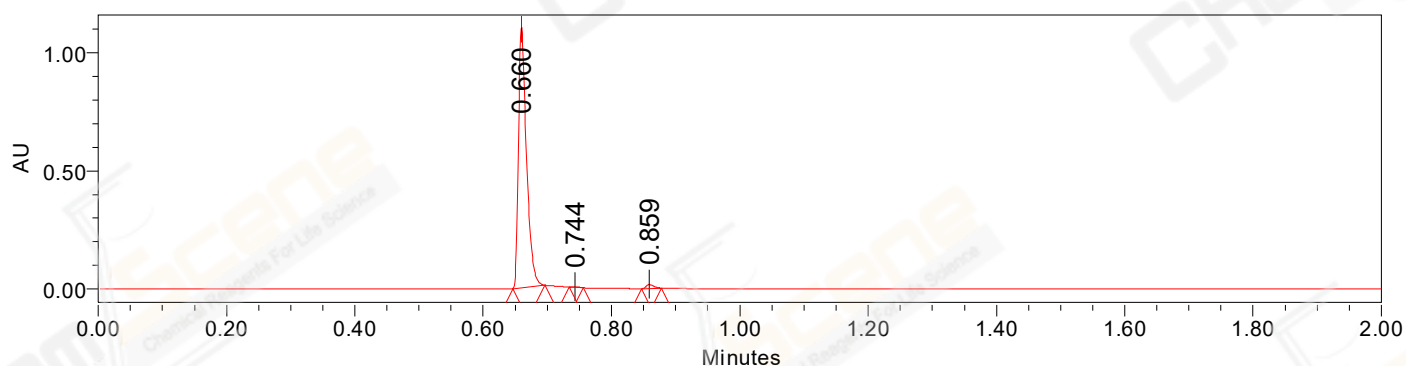


SAMPLE INFORMATION

CAS NO.: 104421-21-8
Sample information:
Vial: 2:A,3
Injection #: 1
Injection Volume: 0.50 ul
Run Time: 2.8 Minutes
Sample Set Name: 20211101

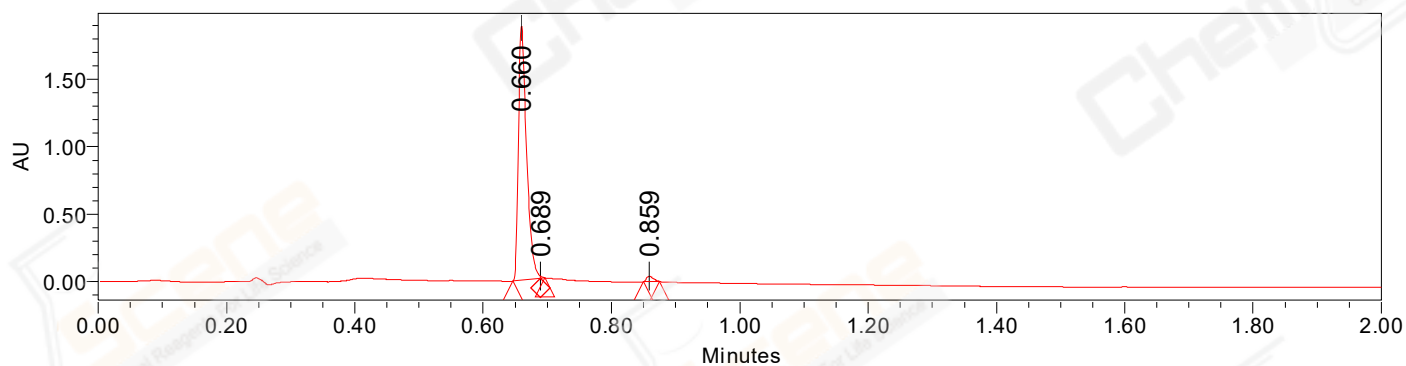
Acquired By: LY
Date Acquired: 11/1/2021 5:37:50 PM CST
Acq. Method Set: 1_POS_2MIN
Date Processed: 11/3/2021 1:36:06 PM CST,
Processing Method: PDA_01, MS_scan
Channel Name: PDA Ch1 214nm@4.8nm, MS TIC,
Column Name:

Auto-Scaled Chromatogram



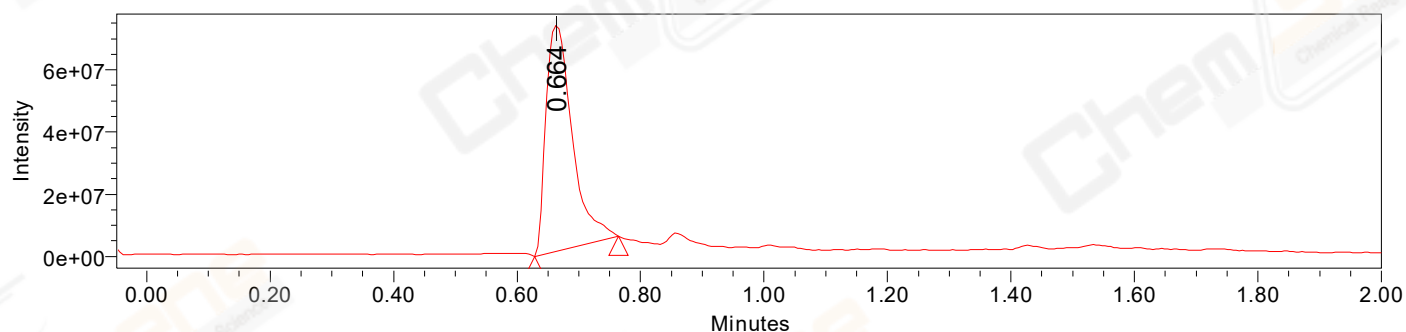
Processed Channel Descr. PDA Ch2 254nm@4.8nm

Auto-Scaled Chromatogram



Processed Channel Descr. PDA Ch1 214nm@4.8nm

Auto-Scaled Chromatogram



Processed Channel Descr. ACQ-SQD2 1: MS Scan MS TIC, Smoothed by 9 point Savitzky-Golay Filter.,
Time offset by -0.053 mins. (1: 150.00-1000.00 ES+, Centroid, CV=30)

Peak Results
Channel Name: PDA Ch2 254nm@4.8nm

	RT	Width (sec)	Area	Height	% Area	Base Peak (Combined) (m/z)	Channel Name
1	0.660	3.050	964789	1100844	98.37	152.09	PDA Ch2 254nm@4.8nm
2	0.744	1.300	1674	2587	0.17	455.36	PDA Ch2 254nm@4.8nm
3	0.859	1.900	14282	17171	1.46	419.16	PDA Ch2 254nm@4.8nm

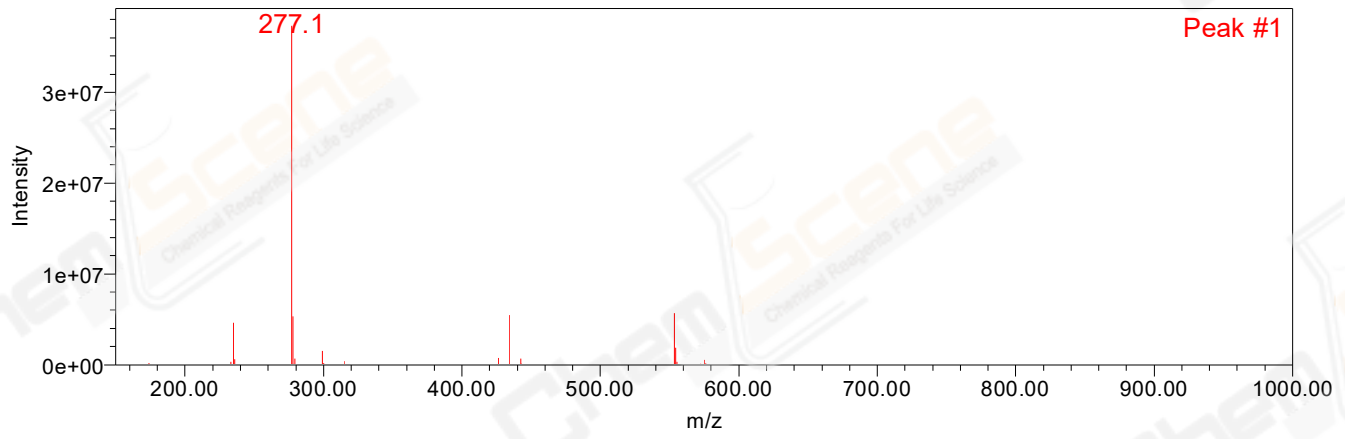
Peak Results
Channel Name: PDA Ch1 214nm@4.8nm

	RT	Width (sec)	Area	Height	% Area	Base Peak (Combined) (m/z)	Channel Name
1	0.660	2.600	1669976	1888218	98.01	152.09	PDA Ch1 214nm@4.8nm
2	0.689	0.450	3286	17983	0.19	296.15	PDA Ch1 214nm@4.8nm
3	0.859	1.500	30551	40454	1.79	233.03	PDA Ch1 214nm@4.8nm

Peak Results
Channel Name: MS TIC

	RT	Width (sec)	Area	Height	% Area	Base Peak (Combined) (m/z)	Channel Name
1	0.664	8.125	216568851	72753321	100.00	277.11	MS TIC

Match Plot



Retention Time 0.664 Channel Name MS TIC