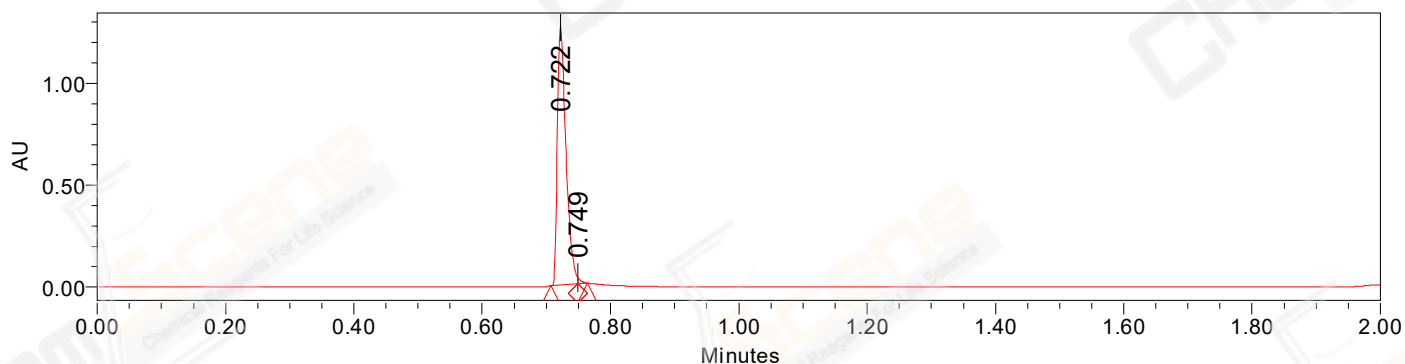


SAMPLE INFORMATION

CAS NO.: 1817628-40-2
Sample information: 1:A,2
Vial: 1
Injection #: 1
Injection Volume: 1.00 ul
Run Time: 2.8 Minutes
Sample Set Name: 20211109

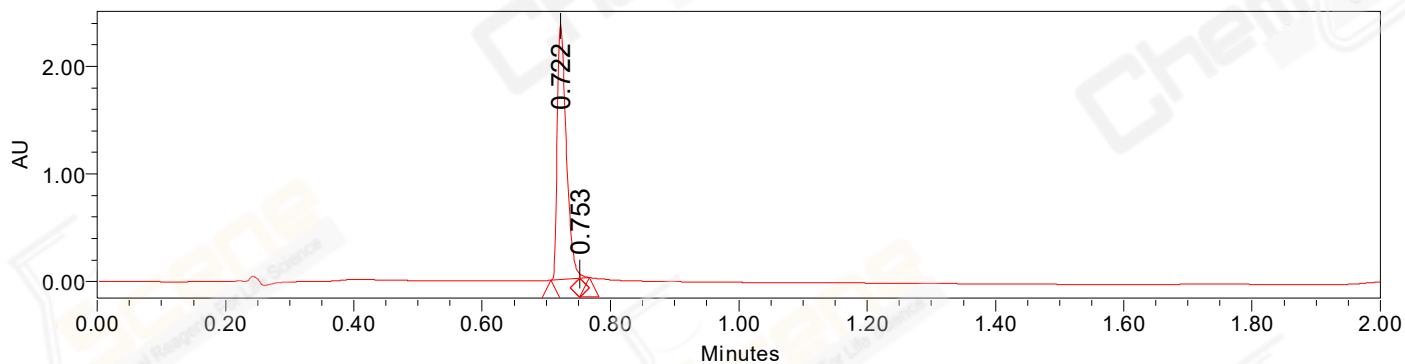
Acquired By: LY
Date Acquired: 11/9/2021 3:48:19 PM CST
Acq. Method Set: 1_POS_2MIN
Date Processed: 11/9/2021 4:03:55 PM CST,
Processing Method: PDA_01, MS_scan
Channel Name: PDA Ch1 214nm@4.8nm, MS TIC,
Column Name:

Auto-Scaled Chromatogram



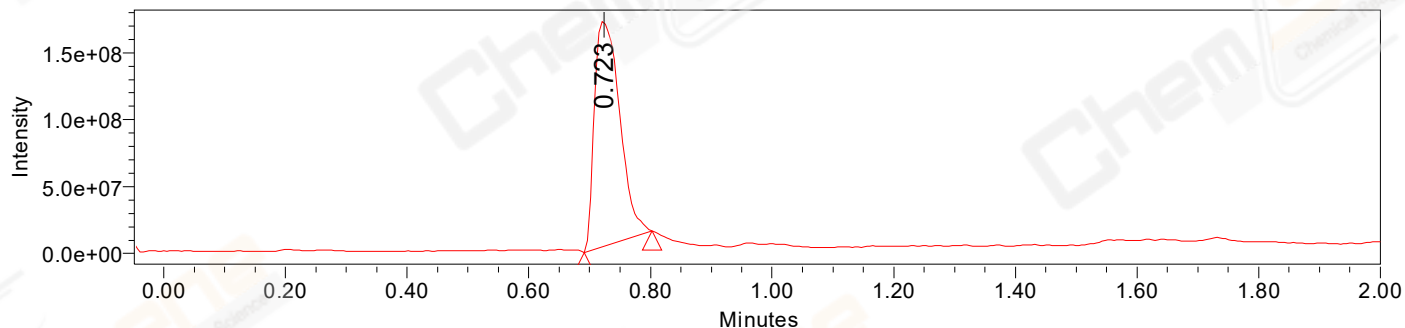
Processed Channel Descr. PDA Ch2 254nm@4.8nm

Auto-Scaled Chromatogram



Processed Channel Descr. PDA Ch1 214nm@4.8nm

Auto-Scaled Chromatogram



Processed Channel Descr. ACQ-SQD2 1: MS Scan MS TIC, Smoothed by 9 point Savitzky-Golay Filter., Time offset by -0.053 mins. (1: 150.00-1000.00 ES+, Centroid, CV=30)

Peak Results
Channel Name: PDA Ch2 254nm@4.8nm

	RT	Width (sec)	Area	Height	% Area	Base Peak (Combined) (m/z)	Channel Name
1	0.722	2.500	1183501	1275600	99.23	152.40	PDA Ch2 254nm@4.8nm
2	0.749	0.900	9208	30645	0.77	330.13	PDA Ch2 254nm@4.8nm

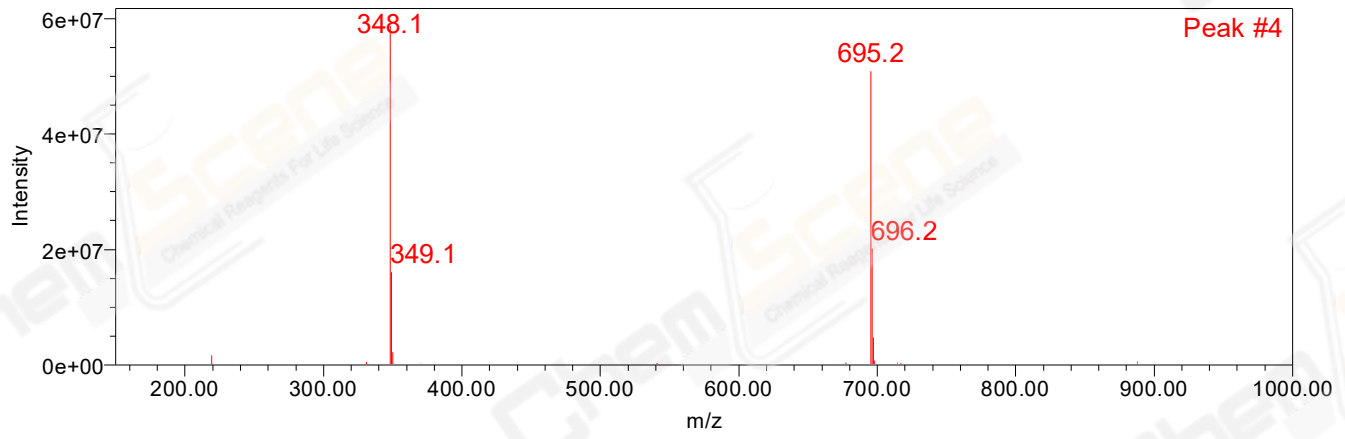
Peak Results
Channel Name: PDA Ch1 214nm@4.8nm

	RT	Width (sec)	Area	Height	% Area	Base Peak (Combined) (m/z)	Channel Name
1	0.722	2.750	2311259	2378798	99.47	334.04	PDA Ch1 214nm@4.8nm
2	0.753	0.900	12414	37941	0.53	330.16	PDA Ch1 214nm@4.8nm

Peak Results
Channel Name: MS TIC

	RT	Width (sec)	Area	Height	% Area	Base Peak (Combined) (m/z)	Channel Name
1	0.723	6.674	486040194	169915943	100.00	348.11	MS TIC

Match Plot



Retention Time 0.723 Channel Name MS TIC