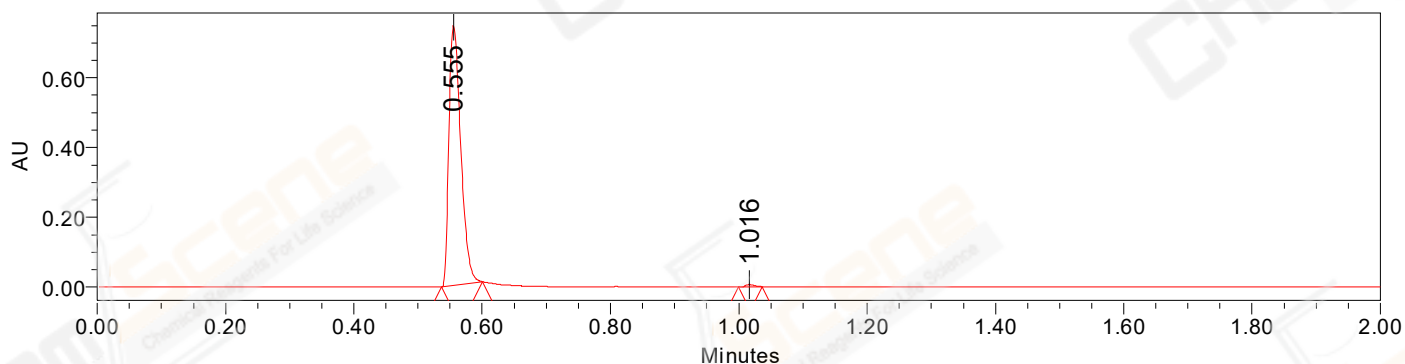


## SAMPLE INFORMATION

Sample Name: BIZ2021-N10-WLQ11  
CAS NO.: 1196541-47-5  
Vial: 1:B,5  
Injection #: 1  
Injection Volume: 0.50 ul  
Run Time: 2.8 Minutes  
Sample Set Name: 20211111

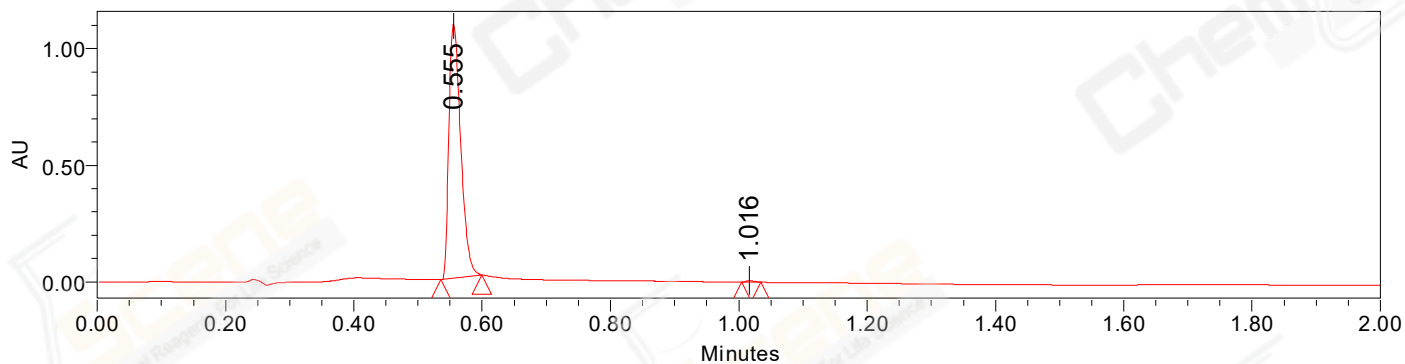
Acquired By: LY  
Date Acquired: 11/11/2021 12:05:15 PM CST  
Acq. Method Set: 1\_POS\_2MIN  
Date Processed: 11/11/2021 1:53:21 PM CST,  
Processing Method: PDA\_01, MS\_scan  
Channel Name: PDA Ch1 214nm@4.8nm, MS TIC,  
Column Name:

### Auto-Scaled Chromatogram



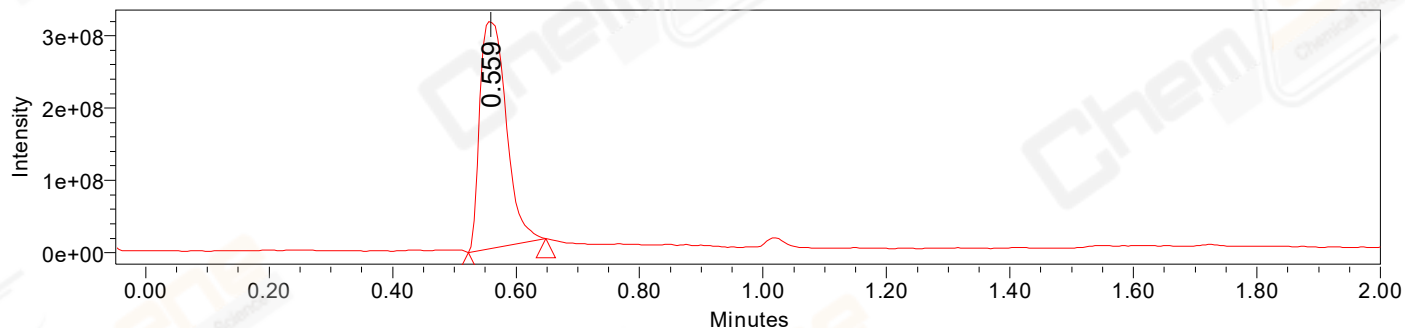
Processed Channel Descr. PDA Ch2 254nm@4.8nm

### Auto-Scaled Chromatogram



Processed Channel Descr. PDA Ch1 214nm@4.8nm

### Auto-Scaled Chromatogram



Processed Channel Descr. ACQ-SQD2 1: MS Scan MS TIC, Smoothed by 9 point Savitzky-Golay Filter., Time offset by -0.053 mins. (1: 150.00-1000.00 ES+, Centroid, CV=30)

Peak Results  
Channel Name: PDA Ch2 254nm@4.8nm

	RT	Width (sec)	Area	Height	% Area	Base Peak (Combined) (m/z)	Channel Name
1	0.555	3.850	957949	744238	99.40	500.39	PDA Ch2 254nm@4.8nm
2	1.016	2.250	5760	6481	0.60	161.60	PDA Ch2 254nm@4.8nm

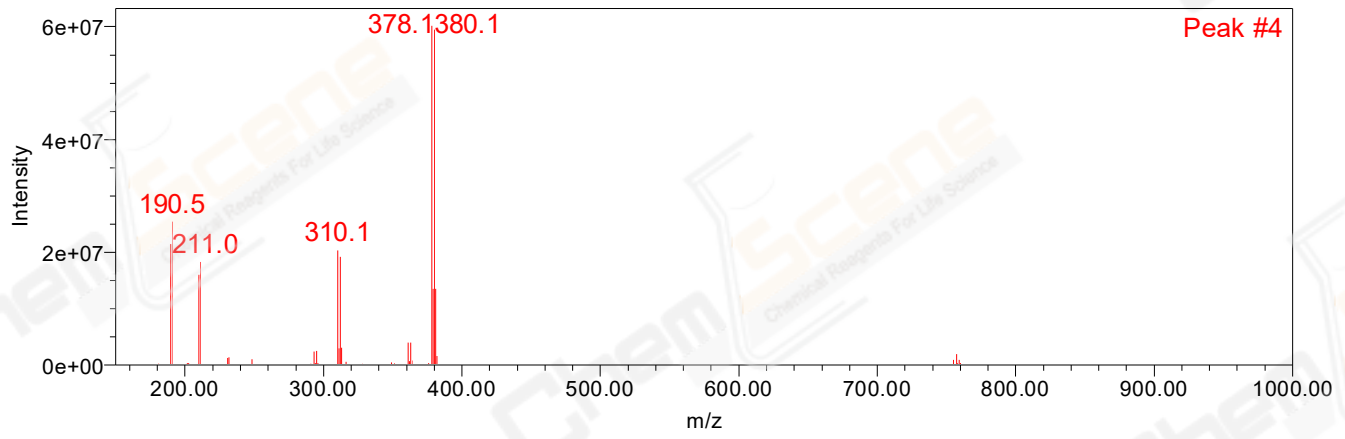
Peak Results  
Channel Name: PDA Ch1 214nm@4.8nm

	RT	Width (sec)	Area	Height	% Area	Base Peak (Combined) (m/z)	Channel Name
1	0.555	3.800	1395131	1089114	99.65	500.39	PDA Ch1 214nm@4.8nm
2	1.016	1.800	4926	5822	0.35	161.61	PDA Ch1 214nm@4.8nm

Peak Results  
Channel Name: MS TIC

	RT	Width (sec)	Area	Height	% Area	Base Peak (Combined) (m/z)	Channel Name
1	0.559	7.544	937259382	316984786	100.00	378.06	MS TIC

### Match Plot



Retention Time 0.559 Channel Name MS TIC