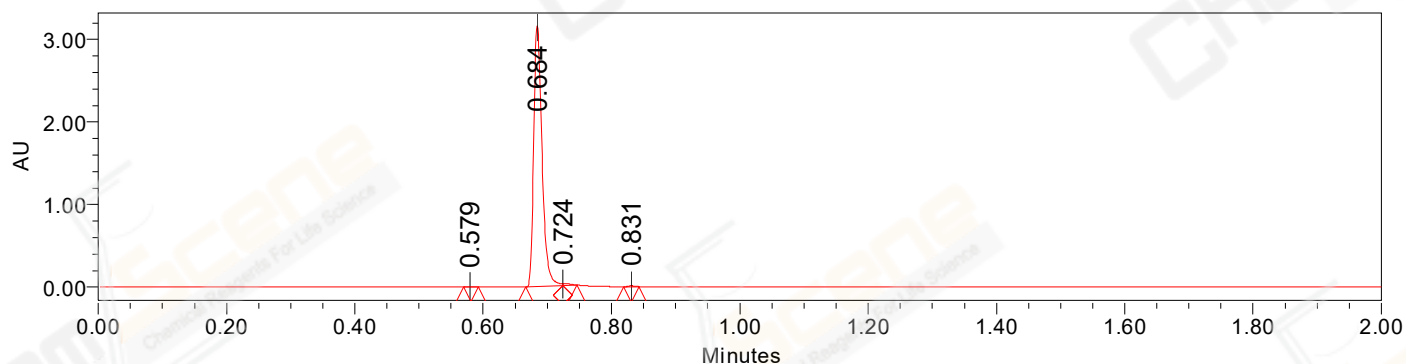


SAMPLE INFORMATION

CAS NO.: 779353-01-4
Sample information:
Vial: 1:A,8
Injection #: 1
Injection Volume: 0.50 ul
Run Time: 2.8 Minutes
Sample Set Name: 20211112

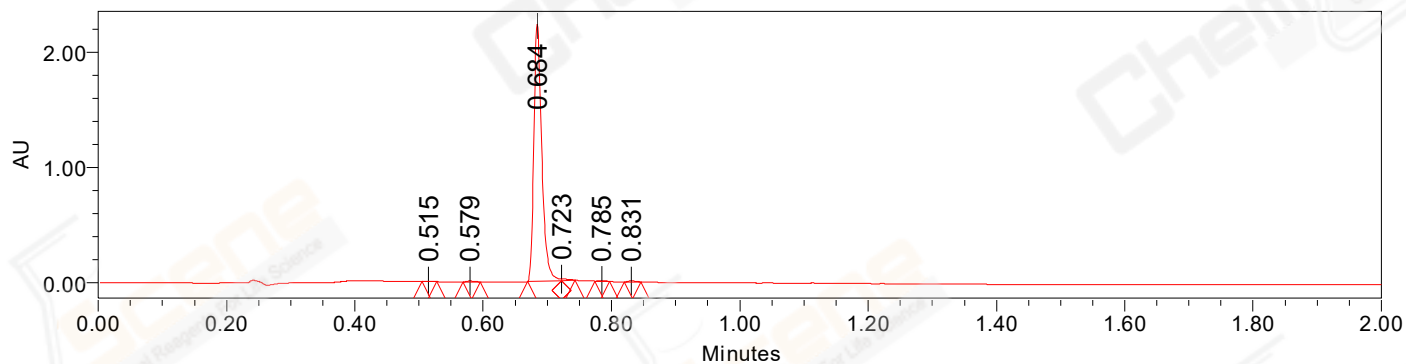
Acquired By: LY
Date Acquired: 11/12/2021 11:14:45 AM CST
Acq. Method Set: 1_POS_2MIN
Date Processed: 11/12/2021 2:35:46 PM CST,
Processing Method: PDA_01, MS_scan
Channel Name: PDA Ch1 214nm@4.8nm, MS TIC,
Column Name:

Auto-Scaled Chromatogram



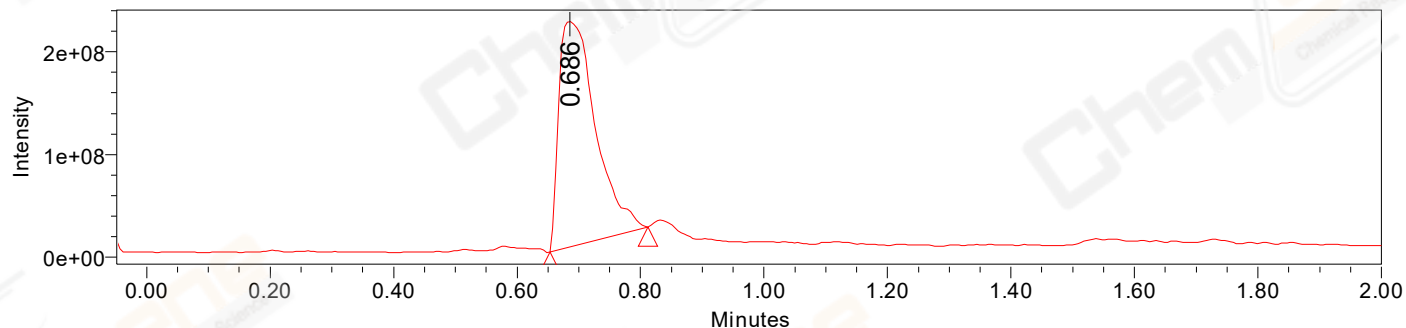
Processed Channel Descr. PDA Ch2 254nm@4.8nm

Auto-Scaled Chromatogram



Processed Channel Descr. PDA Ch1 214nm@4.8nm

Auto-Scaled Chromatogram



Processed Channel Descr. ACQ-SQD2 1: MS Scan MS TIC, Smoothed by 9 point Savitzky-Golay Filter., Time offset by -0.053 mins. (1: 150.00-1000.00 ES+, Centroid, CV=30)

Peak Results
Channel Name: PDA Ch2 254nm@4.8nm

	RT	Width (sec)	Area	Height	% Area	Base Peak (Combined) (m/z)	Channel Name
1	0.579	1.350	4408	6672	0.15	299.17	PDA Ch2 254nm@4.8nm
2	0.684	3.450	2862370	3155103	99.05	236.67	PDA Ch2 254nm@4.8nm
3	0.724	1.300	17599	21660	0.61	397.21	PDA Ch2 254nm@4.8nm
4	0.831	1.400	5581	8559	0.19	304.07	PDA Ch2 254nm@4.8nm

Peak Results
Channel Name: PDA Ch1 214nm@4.8nm

	RT	Width (sec)	Area	Height	% Area	Base Peak (Combined) (m/z)	Channel Name
1	0.515	1.350	2704	4040	0.14	152.04	PDA Ch1 214nm@4.8nm
2	0.579	1.650	5118	7154	0.26	299.17	PDA Ch1 214nm@4.8nm
3	0.684	3.200	1918569	2230028	98.57	236.67	PDA Ch1 214nm@4.8nm
4	0.723	1.250	9002	12489	0.46	397.21	PDA Ch1 214nm@4.8nm
5	0.785	1.350	4407	6690	0.23	191.09	PDA Ch1 214nm@4.8nm
6	0.831	1.550	6510	9112	0.33	304.06	PDA Ch1 214nm@4.8nm

Peak Results
Channel Name: MS TIC

	RT	Width (sec)	Area	Height	% Area	Base Peak (Combined) (m/z)	Channel Name
1	0.686	9.575	907927556	221441332	100.00	397.21	MS TIC

Match Plot

