

File ..3-2 2017-07-03 11-40-23\CPK2017-703-12196.D Tgt Mass (CHM):

Injection Date : 3 Jul 17 12:34 pm +0800 Seq. Line : 13

Sample Name : CPK2017-703-12196 Location : P1-C-02

Acq. Operator : ZLJ\_587 Inj : 1

Spec. Reported : MS Integration Inj Volume : 1 ul

Acq. Method : D:\chem32\1\DATA\20170703\20170703-2 2017-07-03 11-40-23\1-POS-3MIN.M

Analysis Method : D:\CHEM32\1\DATA\20170703\20170703-2 2017-07-03 11-40-23\1-POS-3MIN.M

Catalog No : CS-2015 Batch#12196 A-RP-186

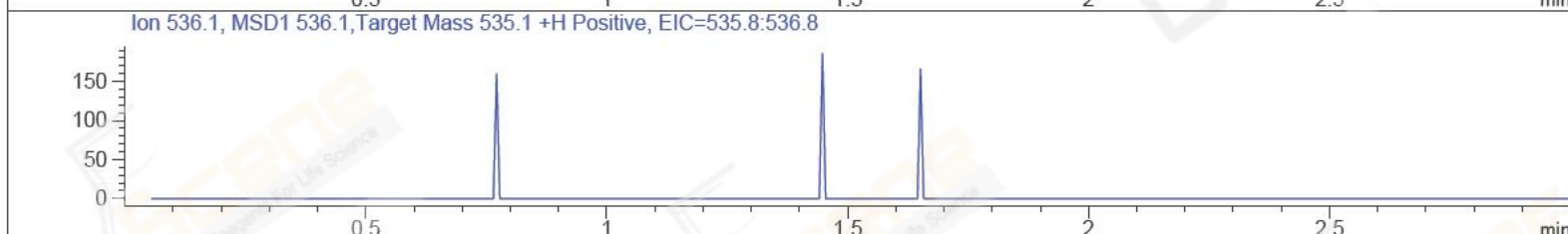
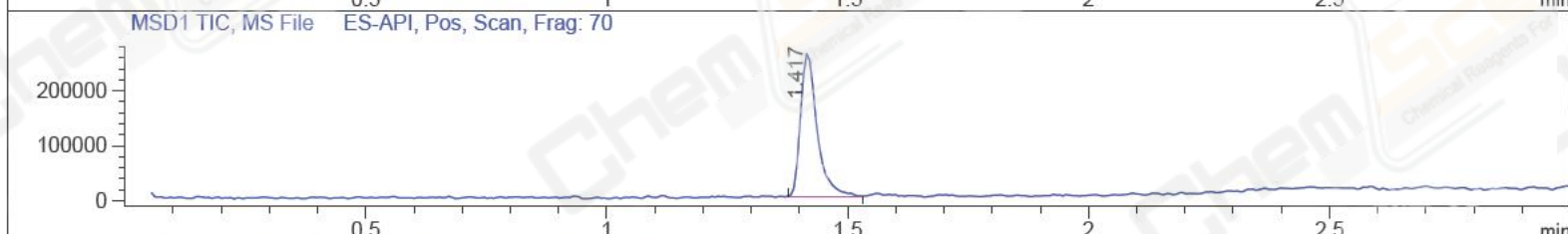
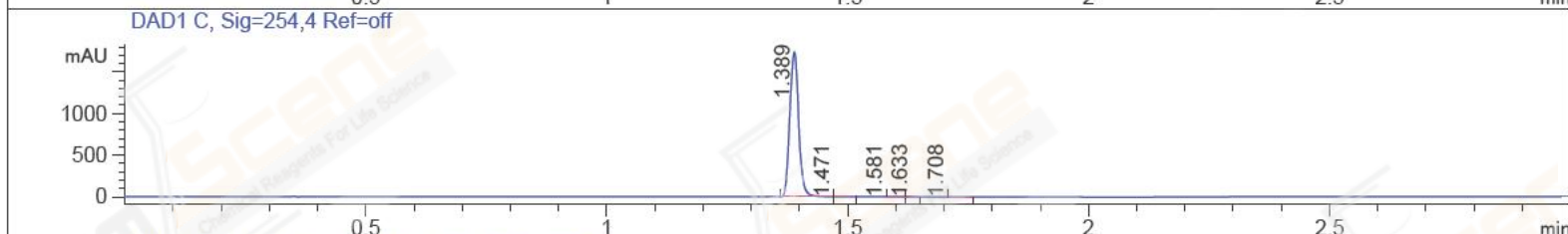
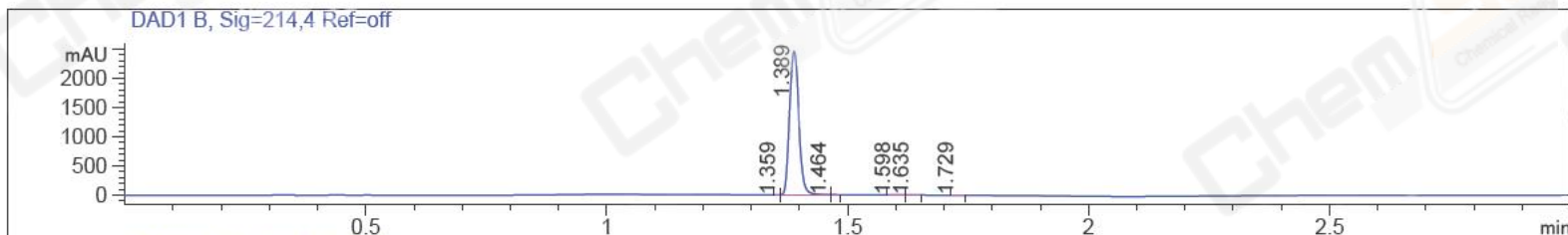
Method Info : Mobile Phase: A: water(0.01%TFA) B:ACN(0.01%TFA)

Gradient: 5% to 95%B within 1.3 min

Flow Rate :1.8ml/min

Column :SunFire C18, 4.6\*50mm,3.5um A-RP-186

Oven Temperature : 45C



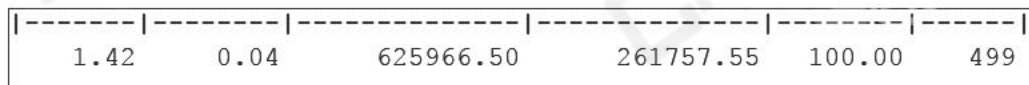
Integration Results for DAD1 B, Sig=214,4 Ref=off

RetTim	Width	Area	Height	Area%	MS (+)
1.36	0.01	0.26	0.58	0.01	ND
1.39	0.02	3298.44	2458.43	99.88	499
1.46	0.01	0.66	1.20	0.02	499
1.60	0.02	1.20	0.95	0.04	ND
1.64	0.02	1.15	0.92	0.03	ND
1.73	0.02	0.73	0.68	0.02	ND

Integration Results for DAD1 C, Sig=254,4 Ref=off

RetTim	Width	Area	Height	Area%	MS (+)
1.39	0.02	2226.45	1736.90	99.82	499
1.47	0.04	1.44	1.01	0.06	499
1.58	0.04	1.15	0.04	0.05	ND
1.63	0.04	0.75	0.65	0.03	ND
1.71	0.08	0.77	0.10	0.03	233

Integration Results for MSD1 TIC, MS File



RetTim	Width	Area	Height	Area%	MS(+)
--------	-------	------	--------	-------	-------

Ret. Time: 1.42

<<<< POSITIVE SPECTRA >>>>

