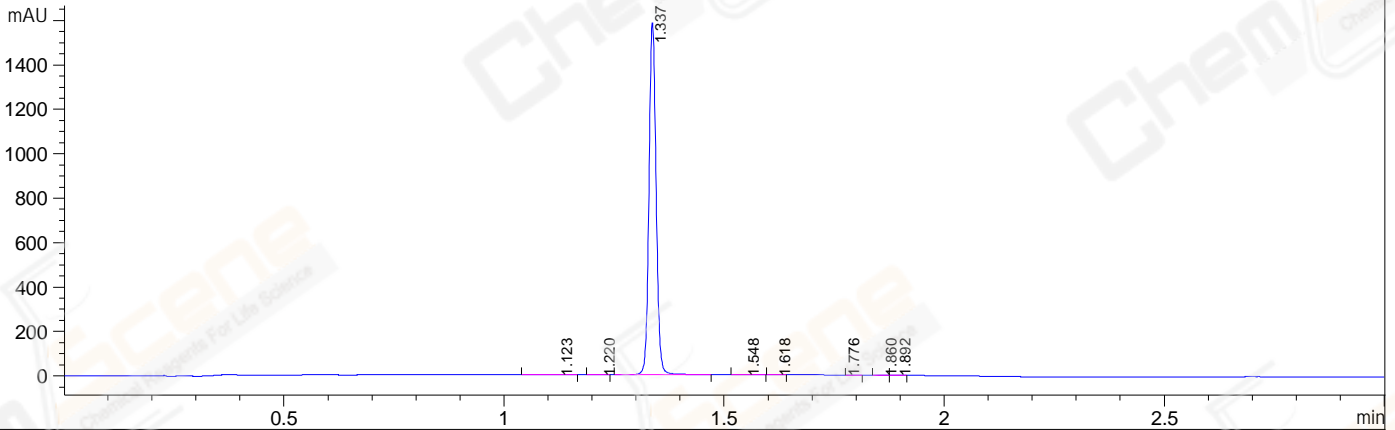
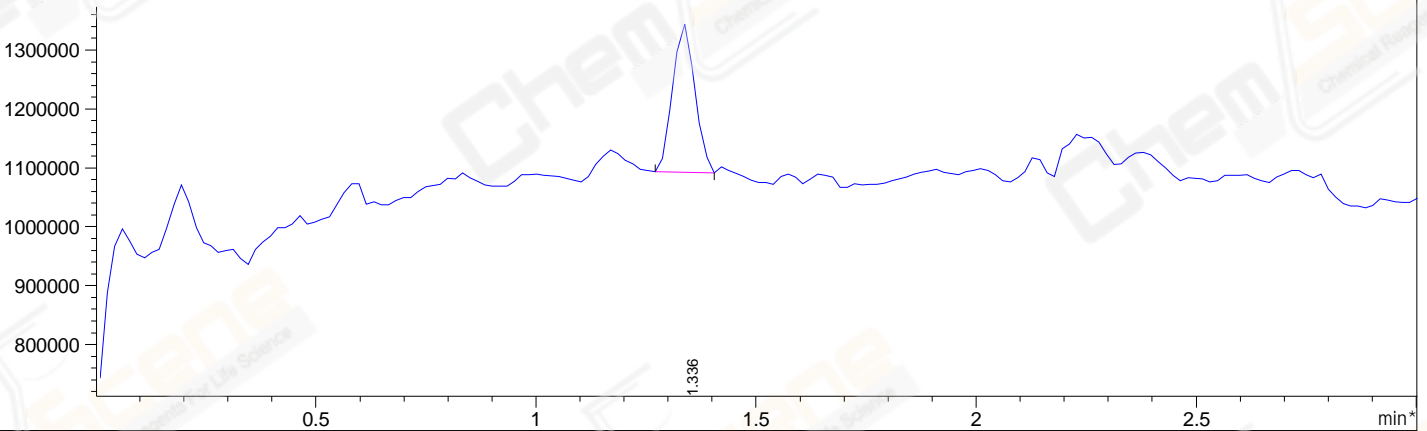


File E:\ChemStation\1\DATA\2024\2024-03\2024-03-26\CPK2024-326-122601-UPLC-MS-10-029868.D
 Injection Date : 26-Mar-24, 14:07:27 Tgt Mass(EZX) :
 Sample Name : CPK2024-326-122601 Location : P2-A-01
 Acq. Operator : LY_2278 Inj : 1
 Spec. Reported : MS Integration Inj Volume : 0.8 ul
 Acq. Method : E:\ChemStation\1\Methods\1-POS-UPLC3.0MIN(1.2)(0-2000).M
 Analysis Method : E:\CHEMSTATION\1\METHODS\1-POS-UPLC3.0MIN(1.2)(0-2000).M
 CAS NO. : 500-66-3 WalkUp method: '1-POS-3MIN(0-2000)' Project: CPK2024
 Method Info : Mobile Phase: A: water(0.01%TFA) B:ACN(0.01%TFA)
 Gradient: 5% to 95%B within 2.0 min
 Flow Rate :1.2ml/min
 Column :Shim-pack Scepter C18-120, 3.0*33mm,3um
 Oven Temperature : 45C

DAD1 A, Sig=214,4 Ref=off



*MSD1 TIC, MS File ES-API, Pos, Scan, Frag: 70



Integration Results for DAD1 A, Sig=214,4 Ref=off

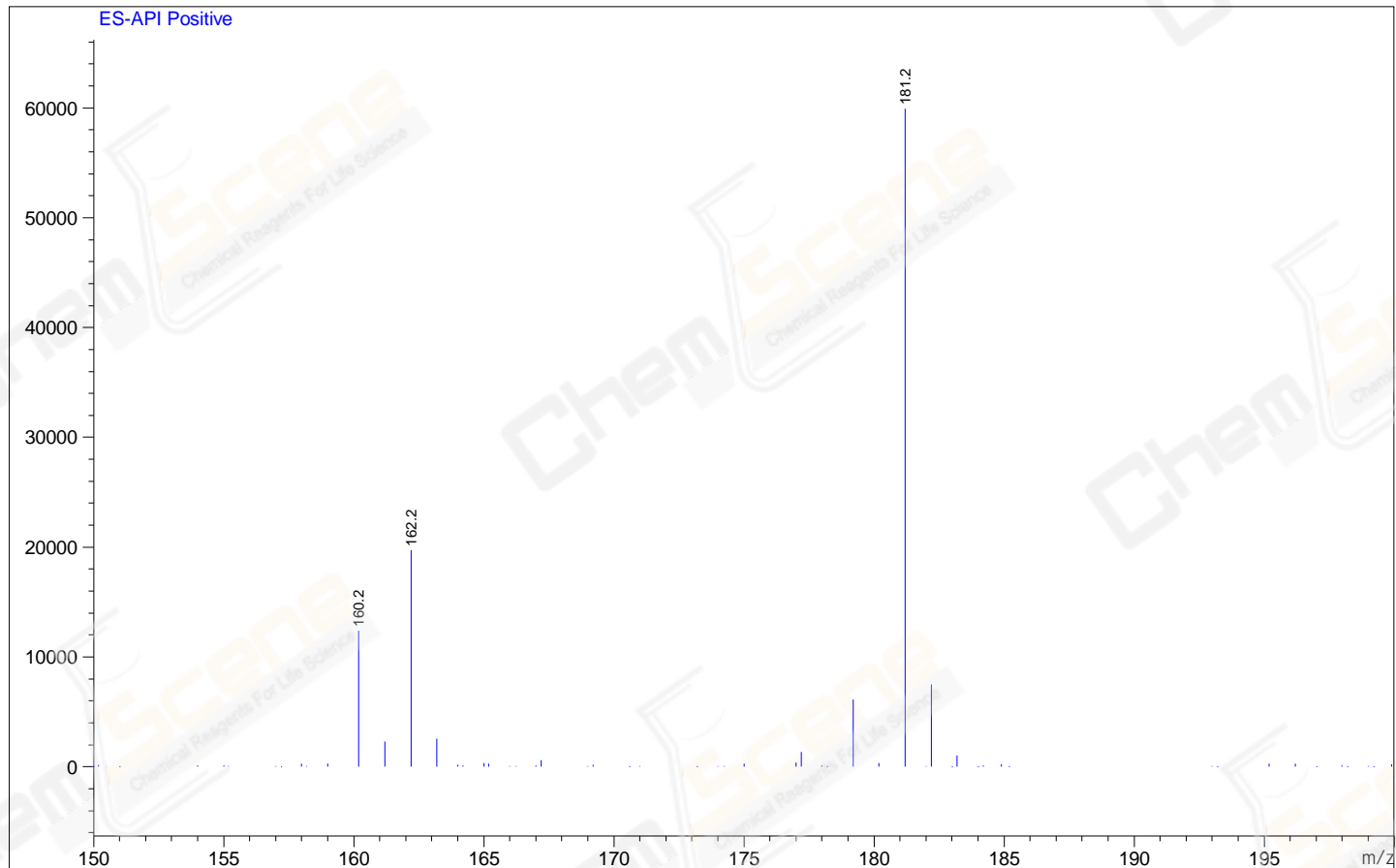
RetTim	Width	Area	Height	Area%
1.12	0.04	1.84	0.77	0.10
1.22	0.03	1.01	0.60	0.06
1.34	0.02	1780.51	1581.56	99.55
1.55	0.03	1.30	0.71	0.07
1.62	0.02	0.67	0.48	0.04
1.78	0.02	0.67	0.09	0.04
1.86	0.02	1.00	0.75	0.06
1.89	0.02	1.56	1.24	0.09

Integration Results for MSD1 TIC, MS File

RetTim	Width	Area	Height	Area%
1.34	0.06	879100.44	252009.25	100.00

Ret. Time: 1.34

<<<< POSITIVE SPECTRA >>>>



*** End of Report ***