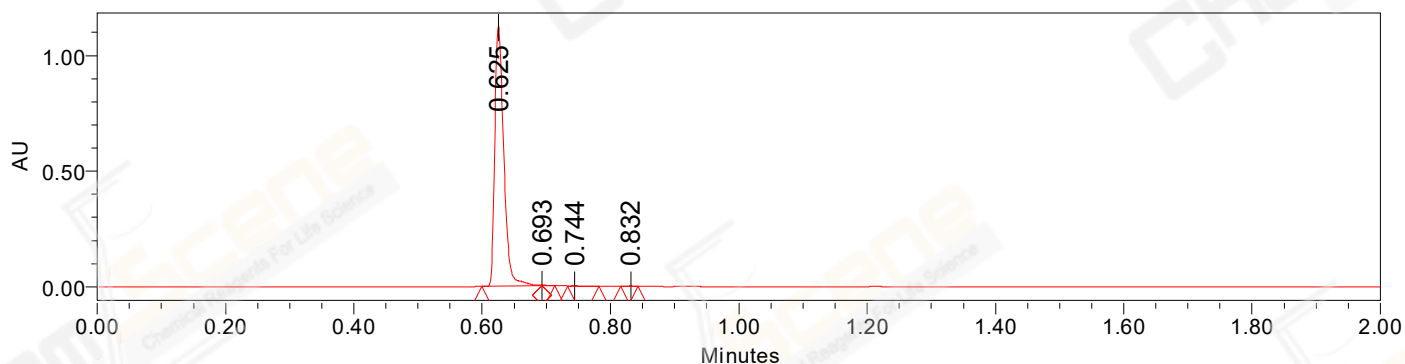


SAMPLE INFORMATION

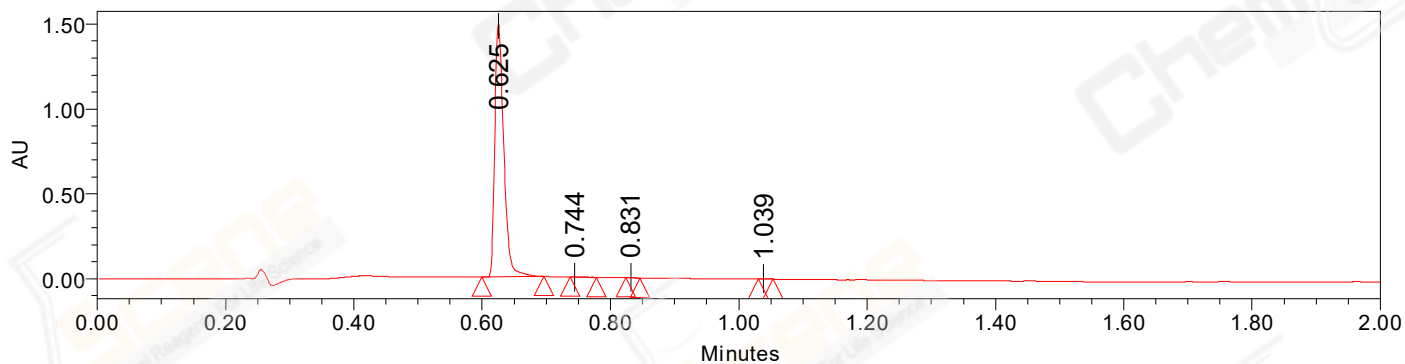
CAS NO.: 1432597-26-6
Sample information:
Vial: 2:C,6
Injection #: 1
Injection Volume: 1.00 ul
Run Time: 2.8 Minutes
Sample Set Name: 20220831

Acquired By: LY
Date Acquired: 8/31/2022 7:47:33 PM CST
Acq. Method Set: 1_POS_2MIN
Date Processed: 9/1/2022 2:30:15 PM CST,
Processing Method: PDA_01, MS_scan
Channel Name: PDA Ch1 214nm@4.8nm, MS TIC,
Column Name: A-RP-985

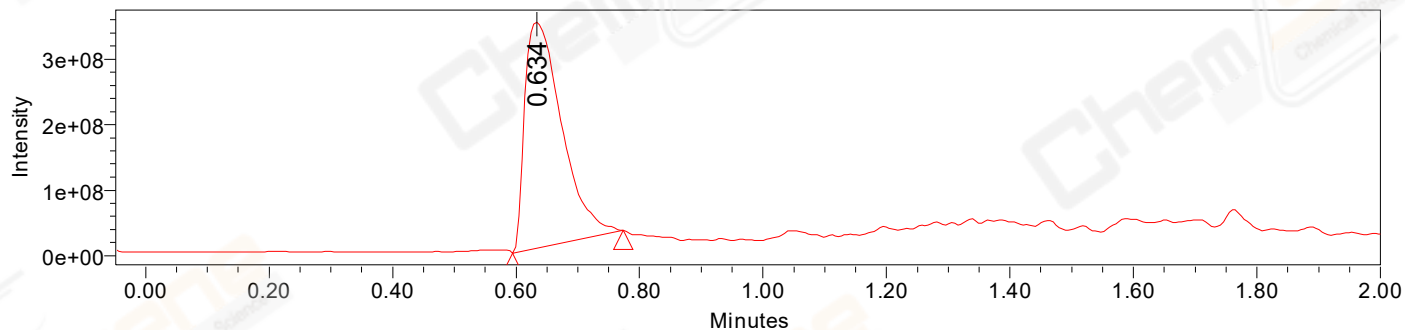
Auto-Scaled Chromatogram



Auto-Scaled Chromatogram



Auto-Scaled Chromatogram



Peak Results
Channel Name: PDA Ch2 254nm@4.8nm

	RT	Width (sec)	Area	Height	% Area	Base Peak (Combined) (m/z)	Channel Name
1	0.625	5.600	1100170	1126861	99.62	152.00	PDA Ch2 254nm@4.8nm
2	0.693	1.200	1369	2160	0.12	204.22	PDA Ch2 254nm@4.8nm
3	0.744	2.950	1292	728	0.12	152.07	PDA Ch2 254nm@4.8nm
4	0.832	1.600	1513	2279	0.14	151.92	PDA Ch2 254nm@4.8nm

Peak Results
Channel Name: PDA Ch1 214nm@4.8nm

	RT	Width (sec)	Area	Height	% Area	Base Peak (Combined) (m/z)	Channel Name
1	0.625	5.800	1450784	1489805	99.65	151.99	PDA Ch1 214nm@4.8nm
2	0.744	2.450	1176	985	0.08	152.07	PDA Ch1 214nm@4.8nm
3	0.831	1.350	1992	3299	0.14	190.00	PDA Ch1 214nm@4.8nm
4	1.039	1.350	1980	3187	0.14	153.07	PDA Ch1 214nm@4.8nm

Peak Results
Channel Name: MS TIC

	RT	Width (sec)	Area	Height	% Area	Base Peak (Combined) (m/z)	Channel Name
1	0.634	10.735	1437313232	345395730	100.00	224.77	MS TIC

Match Plot

