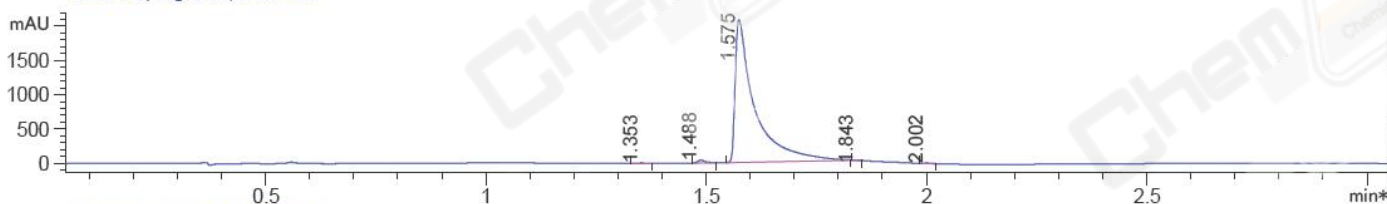
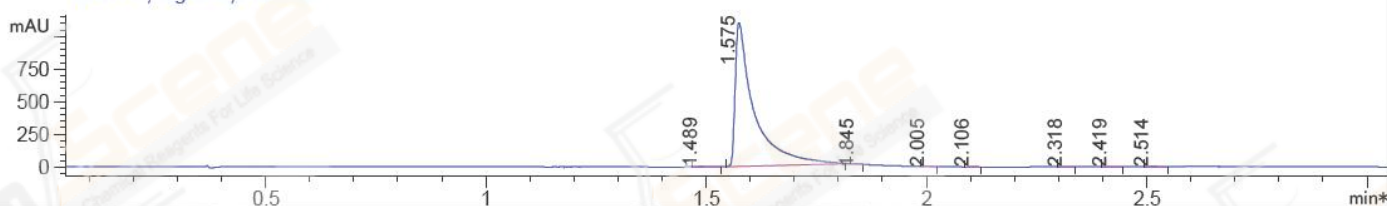


File D:\CHEM32\1\DATA\CPK\CPK2017-314-12461-1.D Tgt Mass (EZX): 558.15
 Injection Date : 14 Mar 17 2:44 pm +0800 Seq. Line : 0
 Sample Name : CPK2017-314-12461-1 Location : P2-D-09
 Acq. Operator : GZZ_718 Inj : 1
 Spec. Reported : MS Integration Inj Volume : 6 ul
 Acq. Method : D:\Chem32\1\METHODS\1-POS-3MIN.M
 Analysis Method : D:\Chem32\1\METHODS\1-STANDBY.M
 Catalog No:CS-1406 Batch#12461 Easy-Access Method: '1-POS-3MIN' 558.15
 Method Info : Column: A-RP-169

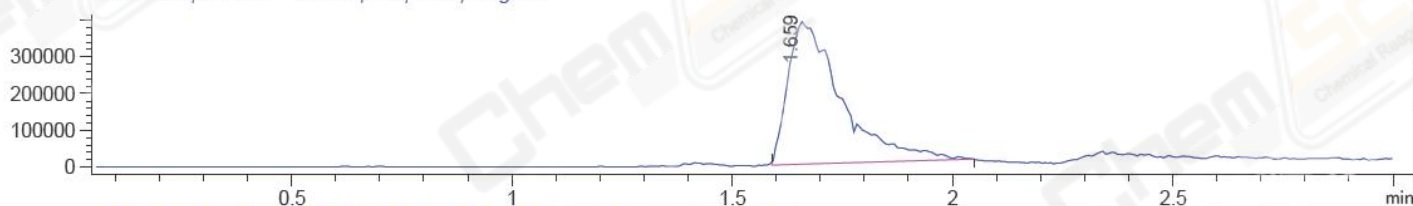
*DAD1 B, Sig=214,4 Ref=off



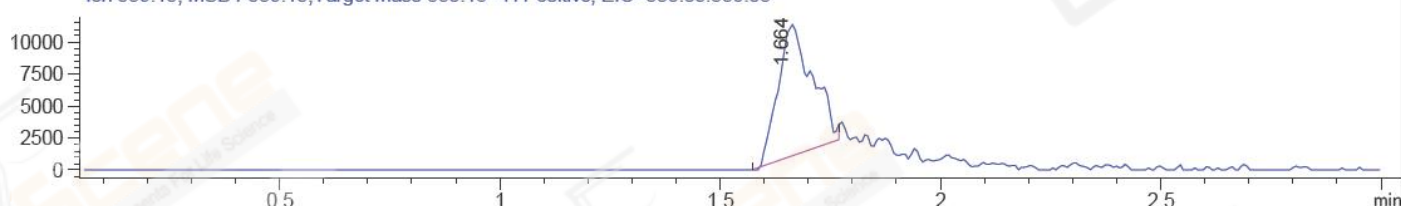
*DAD1 C, Sig=254,4 Ref=off



MSD1 TIC, MS File ES-API, Pos, Scan, Frag: 70



Ion 559.15, MSD1 559.15, Target Mass 558.15 +H Positive, EIC=558.85:559.85



Integration Results for DAD1 B, Sig=214,4 Ref=off

RetTim	Width	Area	Height	Area%	MS (+)
1.35	0.03	7.27	3.60	0.11	ND
1.49	0.02	44.97	38.45	0.69	ND
1.57	0.04	6436.64	2081.09	98.98	280
1.84	0.02	4.93	4.95	0.08	280
2.00	0.02	9.37	7.26	0.14	280

Integration Results for DAD1 C, Sig=254,4 Ref=off

RetTim	Width	Area	Height	Area%	MS (+)
1.49	0.12	8.50	4.34	0.26	ND
1.57	0.05	3293.89	1101.12	99.18	280
1.84	0.03	4.27	3.79	0.13	280
2.00	0.04	3.88	3.09	0.12	280
2.11	0.04	4.20	3.79	0.13	280
2.32	0.04	1.93	1.45	0.06	280
2.42	0.04	2.24	1.30	0.07	306
2.51	0.05	2.17	1.06	0.07	159

Ret. Time: 1.66

<<<< POSITIVE SPECTRA >>>>

