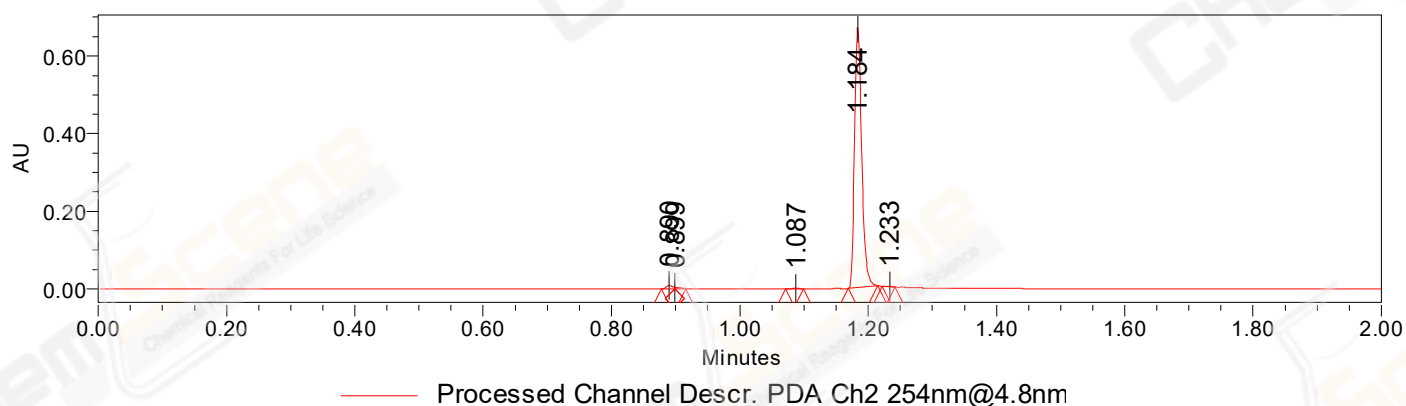


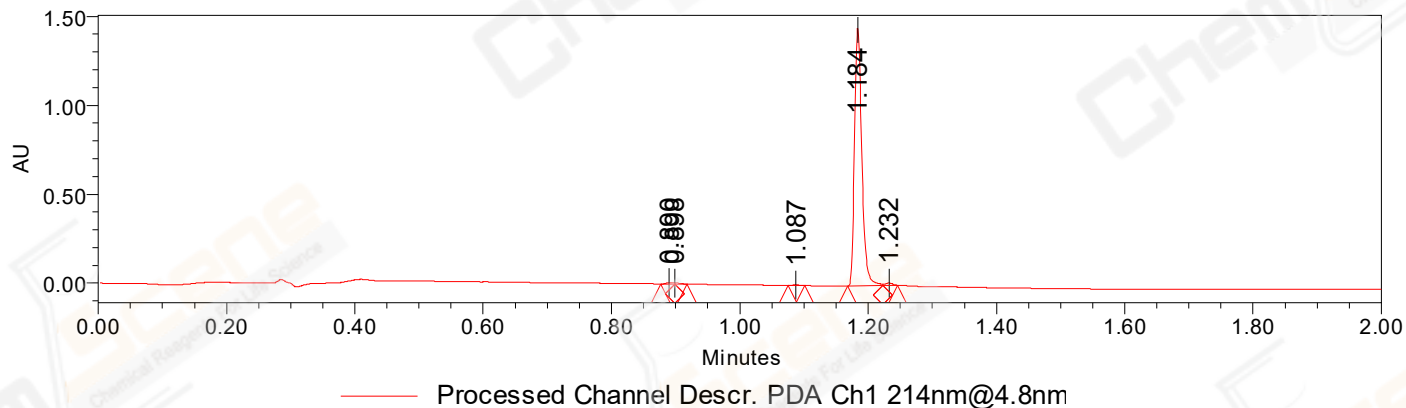
## SAMPLE INFORMATION

Sample Name:	BIZ2021-D27-SCH4	Acquired By:	LY
CAS NO.:	71145-03-4	Date Acquired:	12/27/2021 6:35:39 PM CST
Vial:	1:F,8	Acq. Method Set:	1_POS_2MIN
Injection #:	1	Date Processed:	12/28/2021 1:36:49 PM CST,
Injection Volume:	0.50 ul	Processing Method:	PDA_01, MS_scan
Run Time:	2.8 Minutes	Channel Name:	PDA Ch1 214nm@4.8nm, MS TIC,
Sample Set Name:	20211227	Column Name:	Poroshell 120 EC-C18 A-RP-929

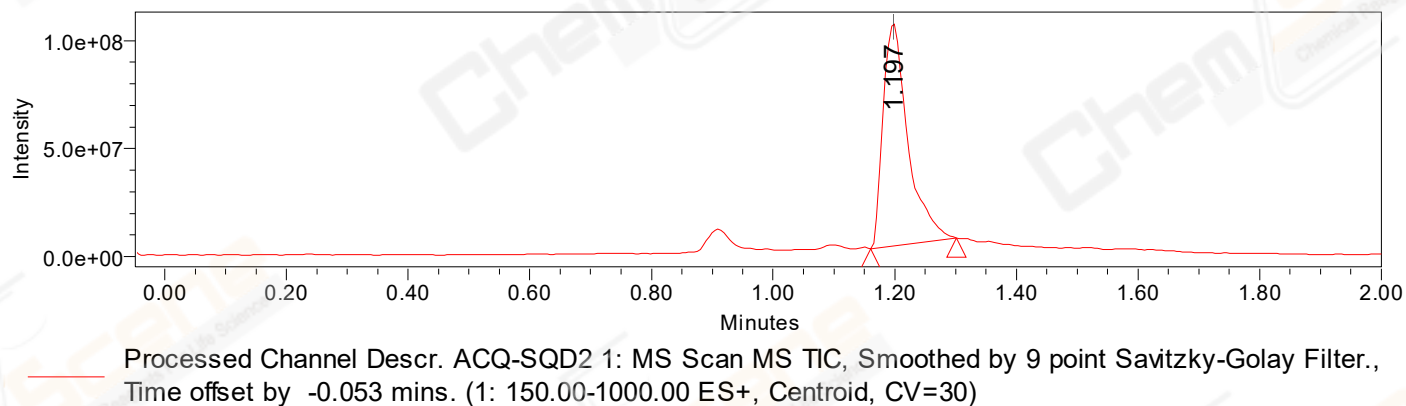
### Auto-Scaled Chromatogram



### Auto-Scaled Chromatogram



### Auto-Scaled Chromatogram



Peak Results  
Channel Name: PDA Ch2 254nm@4.8nm

	RT	Width (sec)	Area	Height	% Area	Channel Name
1	0.890	1.250	6049	8458	1.15	PDA Ch2 254nm@4.8nm
2	0.899	1.000	2063	3556	0.39	PDA Ch2 254nm@4.8nm
3	1.087	1.650	744	973	0.14	PDA Ch2 254nm@4.8nm
4	1.184	2.750	518279	670832	98.18	PDA Ch2 254nm@4.8nm
5	1.233	1.200	764	1320	0.14	PDA Ch2 254nm@4.8nm

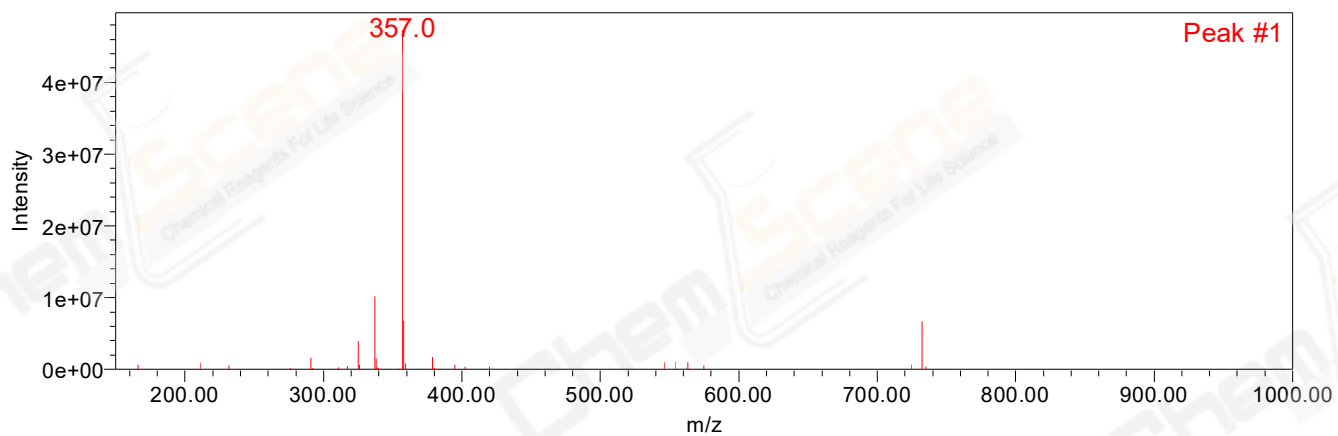
Peak Results  
Channel Name: PDA Ch1 214nm@4.8nm

	RT	Width (sec)	Area	Height	% Area	Channel Name
1	0.890	1.300	5565	7548	0.48	PDA Ch1 214nm@4.8nm
2	0.898	1.150	3449	4943	0.30	PDA Ch1 214nm@4.8nm
3	1.087	1.500	2309	3166	0.20	PDA Ch1 214nm@4.8nm
4	1.184	3.300	1146151	1452101	98.07	PDA Ch1 214nm@4.8nm
5	1.232	1.350	11279	13639	0.97	PDA Ch1 214nm@4.8nm

Peak Results  
Channel Name: MS TIC

	RT	Width (sec)	Area	Height	% Area	Channel Name
1	1.197	8.414	293975121	102952998	100.00	MS TIC

### Match Plot



Retention Time 1.197 Channel Name MS TIC