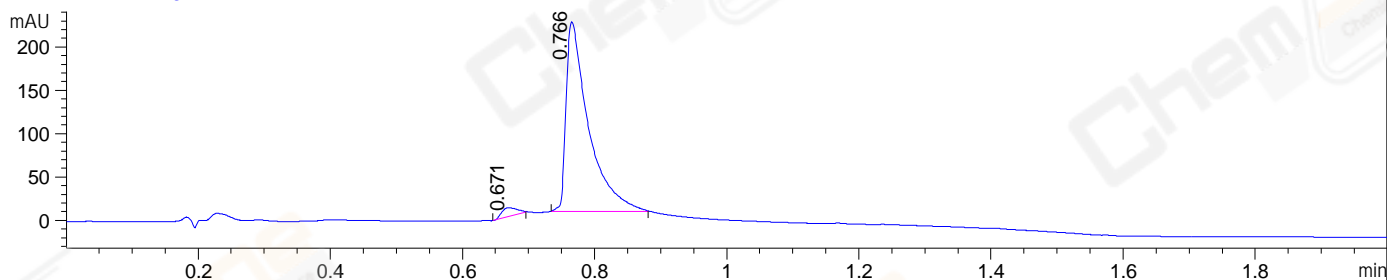
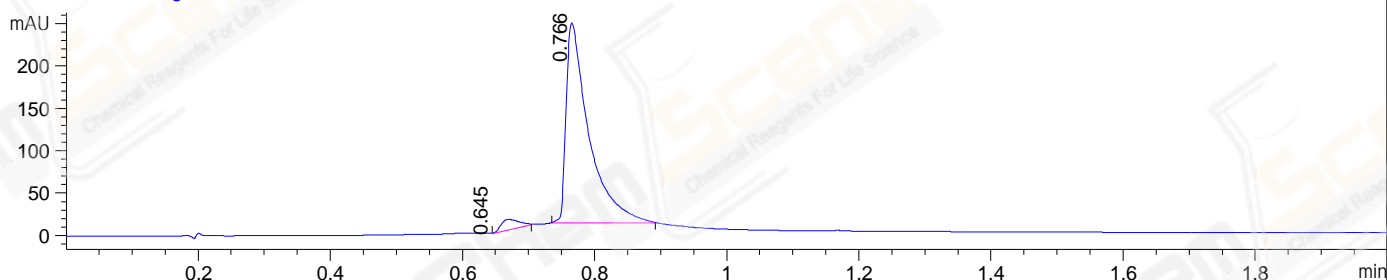


File ..2\2022\2022-01-06\BIZ2022-105-WLQ3-006020.D Tgt Mass (EZX):  
 Injection Date : 06-Jan-22, 11:17:24 Seq. Line : 0  
 Sample Name : BIZ2022-105-WLQ3 Location : P1-D-08  
 Acq. Operator : LY\_2278 Inj : 1  
 Spec. Reported : MS Integration Inj Volume : 0.5 ul  
 Acq. Method : E:\Chem32\1\Methods\1-POS-UPLC2.0MIN(0.8)(150-1000).M  
 Analysis Method : E:\CHEM32\1\METHODS\1-POS-UPLC2.0MIN(0.8)(150-1000).M  
 CAS NO. : 564-25-0 WalkUp method: '1-POS-2MIN' Target:  
 Method Info : Mobile Phase: A: water(0.01%TFA) B:ACN(0.01%TFA)  
 Gradient: 5% to 95%B within 1.3 min  
 Flow Rate : 0.8ml/min  
 Column :Poroshell 120 EC- C18, 2.1\*50mm,1.9um A-RP-750  
 Oven Temperature : 45C

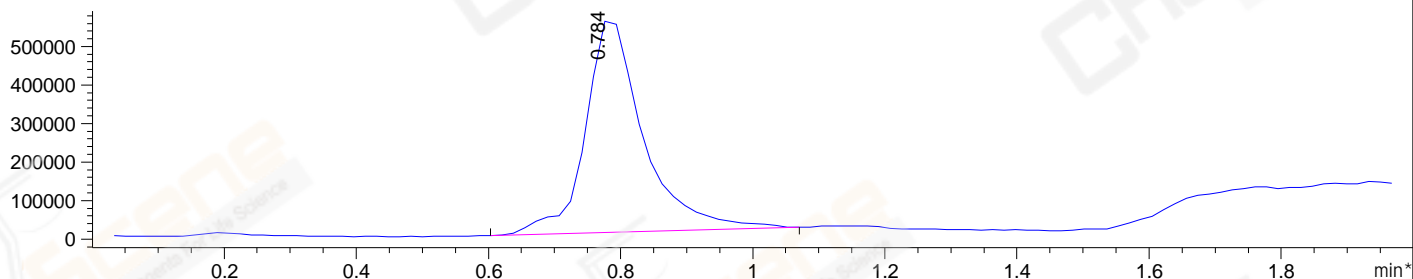
DAD1 A, Sig=214,4 Ref=off



DAD1 B, Sig=254,4 Ref=off



\*MSD1 TIC, MS File ES-API, Pos, Scan, Frag: 70



Integration Results for DAD1 A, Sig=214,4 Ref=off

RetTim	Width	Area	Height	Area%	MS(+)
0.67	0.03	16.80	10.31	3.15	445
0.77	0.04	516.21	218.39	96.85	445

Integration Results for DAD1 B, Sig=254,4 Ref=off

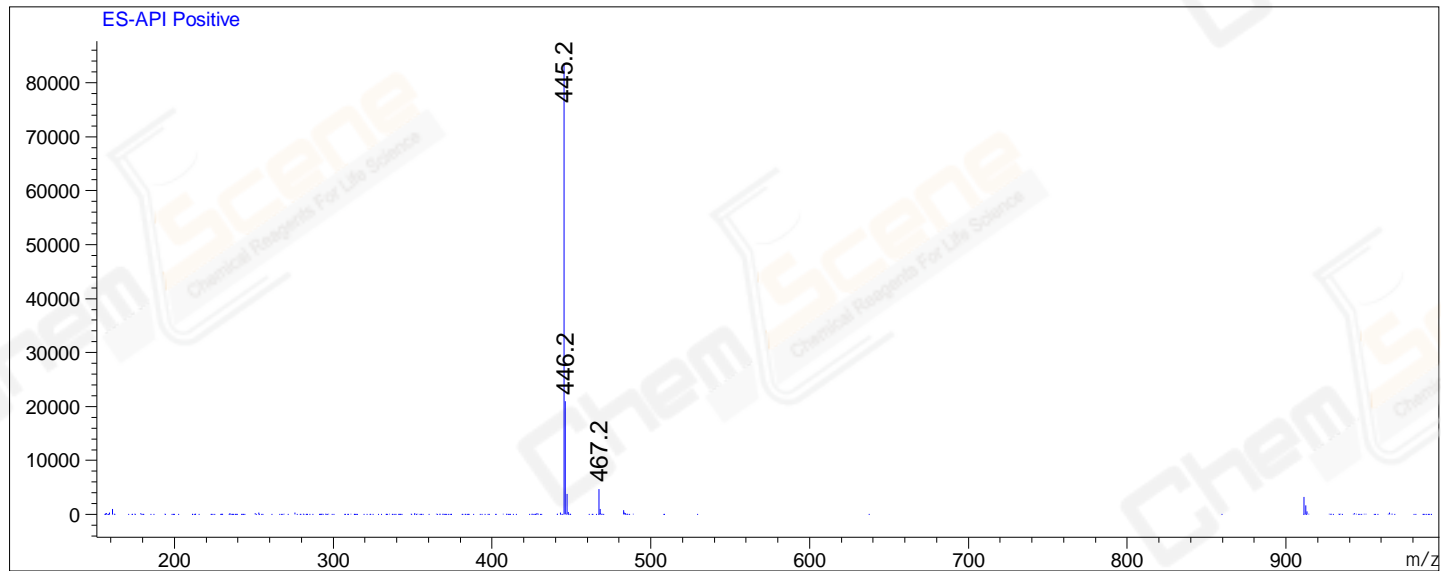
RetTim	Width	Area	Height	Area%	MS(+)
0.65	0.03	23.02	0.44	3.91	445
0.77	0.04	565.95	235.63	96.09	445

Integration Results for MSD1 TIC, MS File

RetTim	Width	Area	Height	Area%	MS(+)
0.78	0.09	3371499.75	562546.44	100.00	445

Ret. Time: 0.78

<<<< POSITIVE SPECTRA >>>>



\*\*\* End of Report \*\*\*