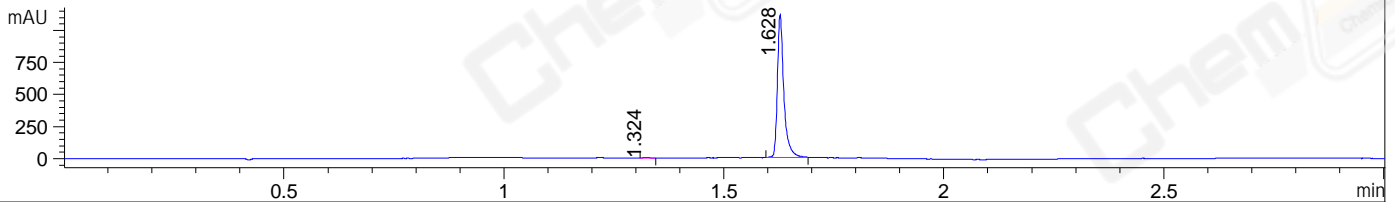
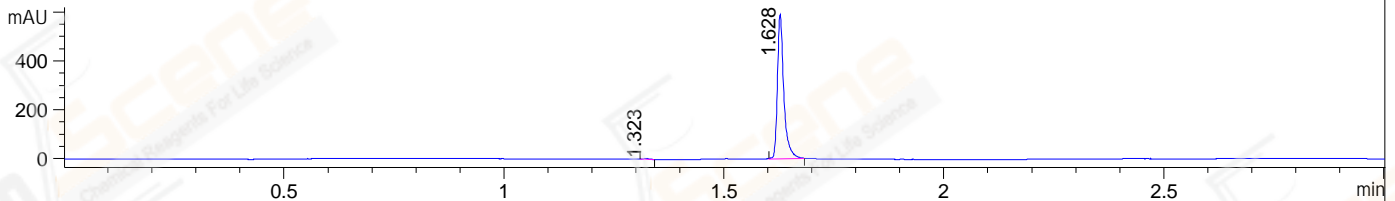


File ..DATA\2020\20200408\916\CPK2020-407-12655-.D Tgt Mass (CHM):  
Injection Date : 8 Apr 20 5:14 pm +0800 Seq. Line : 102  
Sample Name : CPK2020-407-12655 Location : P1-C-06  
Acq. Operator : ZJ\_1432 Inj : 1  
Spec. Reported : MS Integration Inj Volume : 1 ul  
Acq. Method : D:\Chem32\1\data\2020\20200408\916\1-POS-3MIN.M  
Analysis Method : D:\CHEM32\1\DATA\2020\20200408\916\1-POS-3MIN.M  
CAS NO. : 871038-72-1  
Method Info : Mobile Phase: A: water(0.01%TFA) B:ACN(0.01%TFA)  
Gradient: 5% to 95%B within 1.3 min  
Flow Rate :1.8ml/min  
Column :SunFire C18, 4.6\*50mm,3.5um A-RP-433  
Oven Temperature : 45□

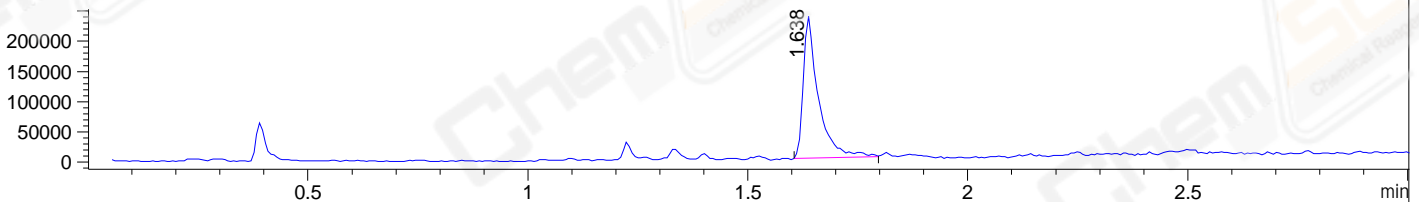
DAD1 B, Sig=214,4 Ref=off



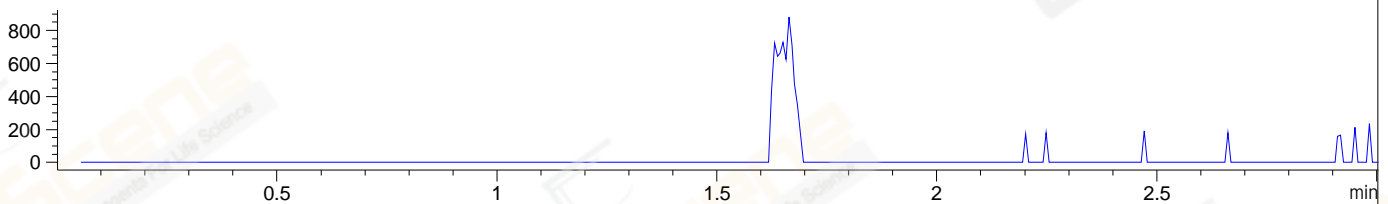
DAD1 C, Sig=254,4 Ref=off



MSD1 TIC, MS File ES-API, Pos, Scan, Frag: 70



Ion 483, MSD1 483, Target Mass 482 +H Positive, EIC=482.7:483.7



Integration Results for DAD1 B, Sig=214,4 Ref=off

RetTim	Width	Area	Height	Area%	MS(+)
1.32	0.01	5.45	6.35	0.47	491
1.63	0.02	1144.40	1114.51	99.53	445

Integration Results for DAD1 C, Sig=254,4 Ref=off

RetTim	Width	Area	Height	Area%	MS(+)
1.32	0.01	3.28	3.98	0.54	491
1.63	0.02	603.56	591.03	99.46	445

Integration Results for MSD1 TIC, MS File

RetTim	Width	Area	Height	Area%	MS(+)
1.64	0.03	567530.38	235431.23	100.00	445

Ret. Time: 1.64

<<<< POSITIVE SPECTRA >>>>

ES-API Positive

