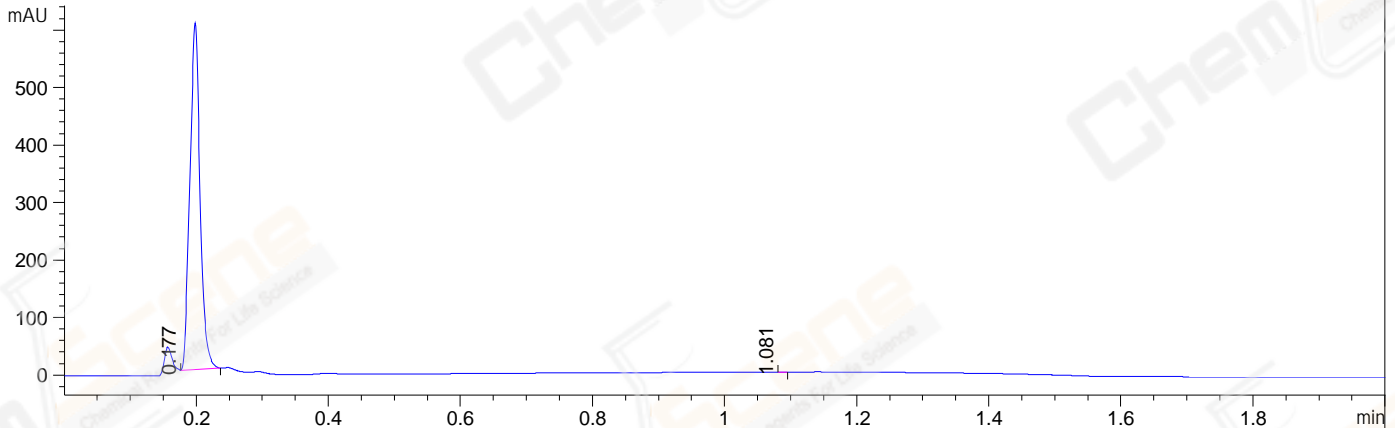
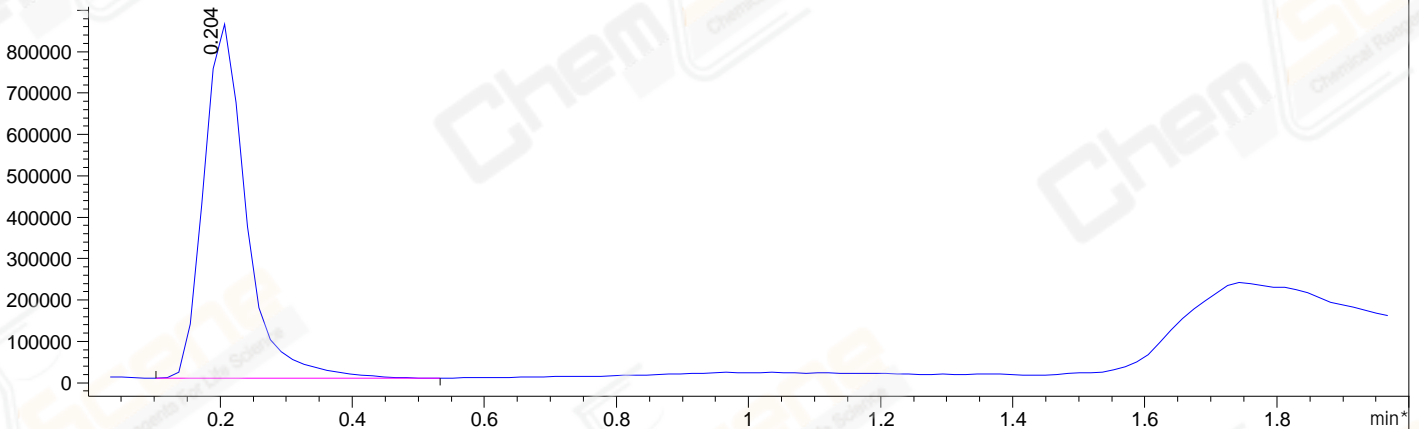


File ..2022\2022\2022-01-09\ZJ11547-021-P-006534.D Tgt Mass (EZ):
Injection Date : 09-Jan-22, 10:34:46 Seq. Line : 0
Sample Name : ZJ11547-021-P Location : P1-D-06
Acq. Operator : LY_2278 Inj : 1
Spec. Reported : MS Integration Inj Volume : 1 ul
Acq. Method : E:\Chem32\1\Methods\1-POS-UPLC2.0MIN(0.8)(150-1000).M
Analysis Method : E:\CHEM32\1\METHODS\1-POS-UPLC2.0MIN(0.8)(150-1000).M
CAS NO. : 1269794-89-9 WalkUp method: '1-POS-2MIN' Target:
Method Info : Mobile Phase: A: water(0.01%TFA) B:ACN(0.01%TFA)
Gradient: 5% to 95%B within 1.3 min
Flow Rate :0.8ml/min
Column :Poroshell 120 EC- C18, 2.1*50mm,1.9um A-RP-750
Oven Temperature : 45C

DAD1 A, Sig=214,4 Ref=off



*MSD1 TIC, MS File ES-API, Pos, Scan, Frag: 70



Integration Results for DAD1 A, Sig=214,4 Ref=off

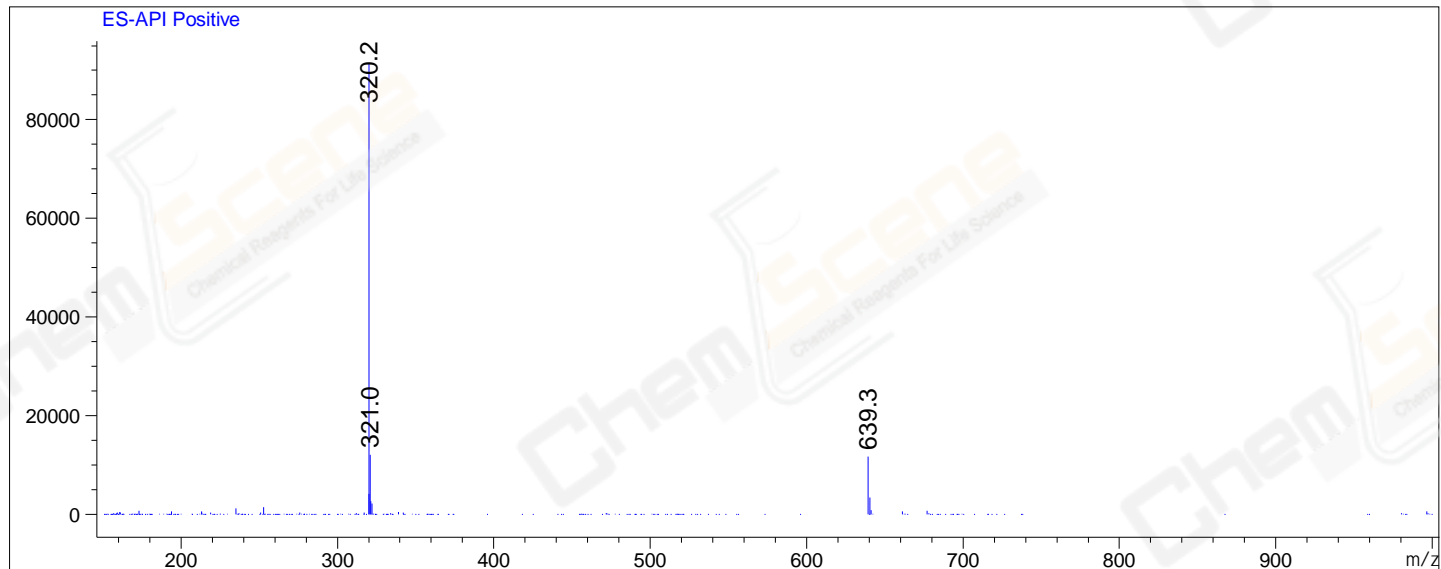
RetTim	Width	Area	Height	Area%	MS(+)
0.18	0.02	646.81	0.25	99.99	320
1.08	0.01	0.06	0.01	0.01	ND

Integration Results for MSD1 TIC, MS File

RetTim	Width	Area	Height	Area%	MS(+)
0.20	0.07	3826547.25	858183.13	100.00	320

Ret. Time: 0.20

<<<< POSITIVE SPECTRA >>>>



*** End of Report ***