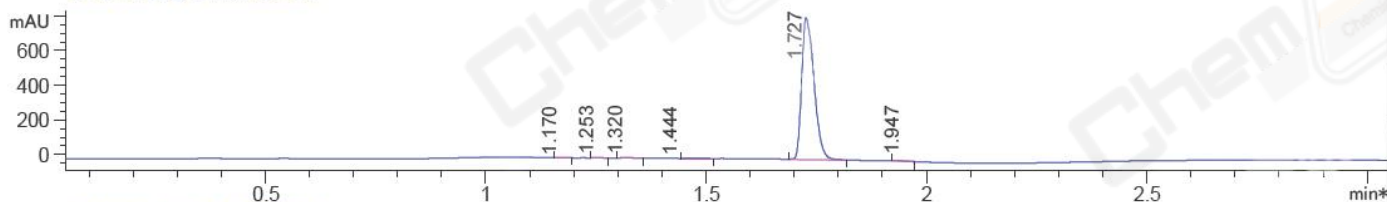
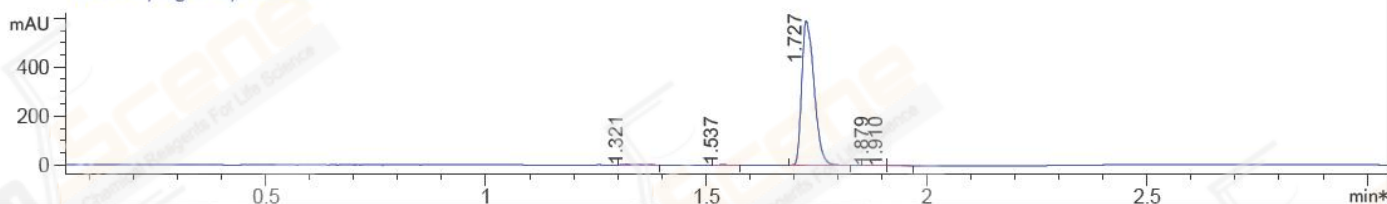


File ..M32\1\DATA\20170221\CPK\CPK2017-221-12731.D Tgt Mass (EZX): 443.40
 Injection Date : 21 Feb 17 3:40 pm +0800 Seq. Line : 0
 Sample Name : CPK2017-221-12731 Location : P2-D-06
 Acq. Operator : GZZ_718 Inj : 1
 Spec. Reported : MS Integration Inj Volume : 1 ul
 Acq. Method : D:\Chem32\1\METHODS\1-POS-3MIN.M
 Analysis Method : D:\CHEM32\1\METHODS\1-POS-3MIN-PROSRSS.M
 Catalog No: CS-3094 Batch#12731 Easy-Access Method: '1-POS-3MIN' 443.40
 Method Info : Mobile Phase: A: water(0.01%TFA) B:ACN(0.01%TFA)
 Gradient: 5% to 95%B within 1.3 min
 Flow Rate :1.8ml/min
 Column :SunFire C18, 4.6*50mm,3.5um A-RP-186
 Oven Temperature : 45C

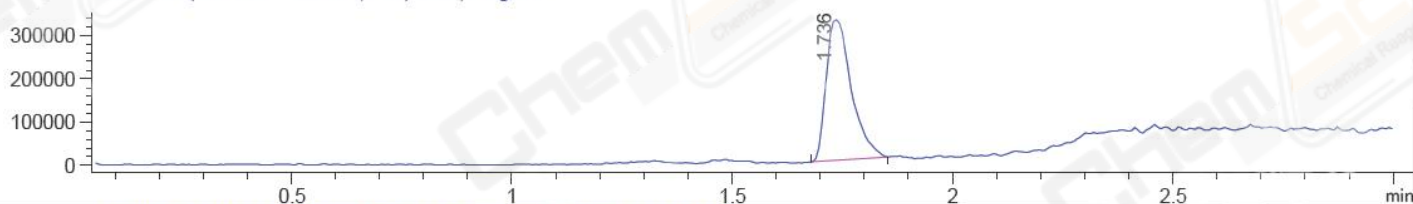
*DAD1 B, Sig=214,4 Ref=off



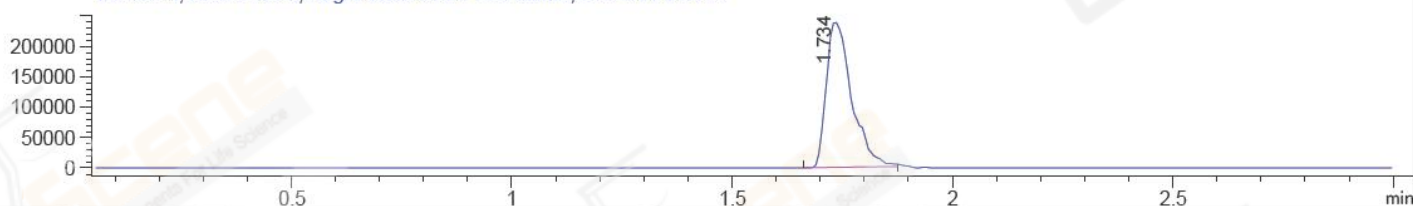
*DAD1 C, Sig=254,4 Ref=off



MSD1 TIC, MS File ES-API, Pos, Scan, Frag: 70



Ion 444.4, MSD1 444.4, Target Mass 443.4 +H Positive, EIC=444.1:445.1



Integration Results for DAD1 B, Sig=214,4 Ref=off

RetTim	Width	Area	Height	Area%	MS (+)
1.17	0.03	1.66	1.09	0.10	ND
1.25	0.02	3.29	2.63	0.20	ND
1.32	0.03	5.68	3.09	0.35	294
1.44	0.03	6.44	0.30	0.40	242
1.73	0.03	1590.26	817.22	98.77	444
1.95	0.03	2.75	1.66	0.17	338

Integration Results for DAD1 C, Sig=254,4 Ref=off

RetTim	Width	Area	Height	Area%	MS (+)
1.32	0.04	7.68	3.13	0.66	ND
1.54	0.03	2.31	1.25	0.20	ND
1.73	0.03	1147.91	589.77	98.88	444
1.88	0.04	1.24	0.52	0.11	444
1.91	0.04	1.81	0.30	0.16	338

Ret. Time: 1.74

<<<< POSITIVE SPECTRA >>>>

