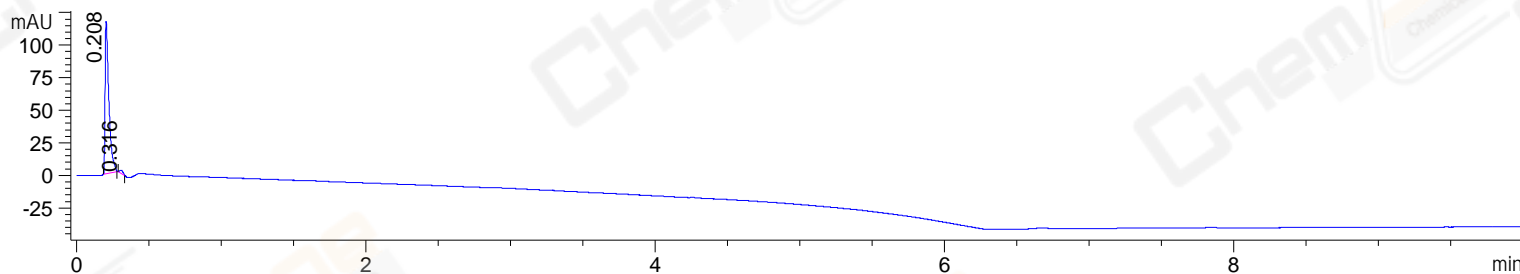


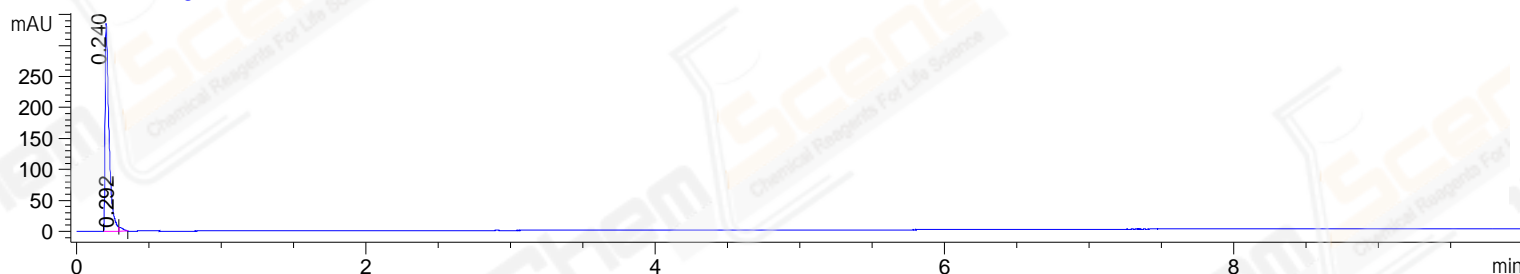
File ..2-23\CPK2023-222-UPLC-MS-04-014687.D Tgt Mass (EZ):

Injection Date : 23-Feb-23, 19:51:52 Seq. Line : 0
 Sample Name : CPK2023-222 Location : P1-C-11
 Acq. Operator : LY_2278 Inj : 1
 Spec. Reported : MS Integration Inj Volume : 0.3 ul
 Acq. Method : E:\Chem32\1\Methods\1-POS-UPLC10.0MIN(0.8ML)-(150-2000).M
 Analysis Method : E:\CHEM32\1\METHODS\1-POS-UPLC10.0MIN(0.8ML)-(150-2000).M
 CAS NO. : 2627-69-2 WalkUp method: '1-POS-10MIN' Project: CPK2023
 Method Info : Mobile Phase: A: water(0.01%TFA) B:ACN(0.01%TFA)
 Gradient: 5% to 95%B within 6 min
 Flow Rate :0.8ml/min
 Column :Poroshell 120 EC- C18, 2.1*50mm,1.9um
 Oven Temperature : 45C

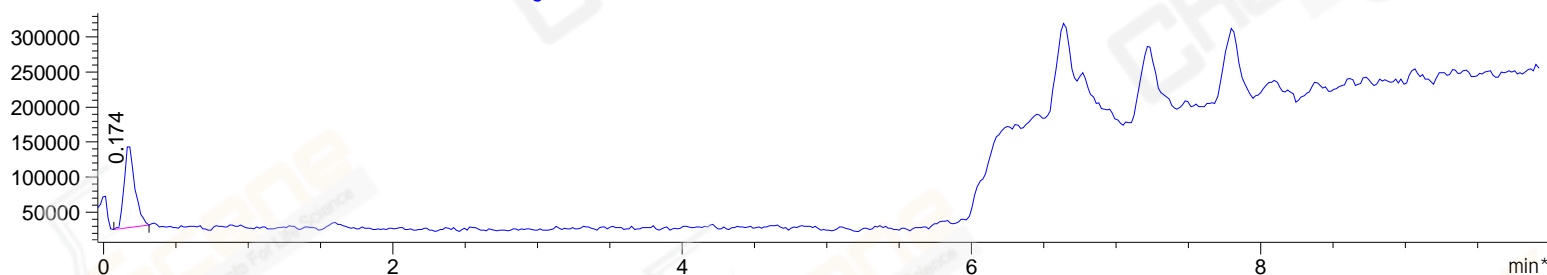
DAD1 A, Sig=214,4 Ref=off



DAD1 B, Sig=254,4 Ref=off



*MSD1 TIC, MS File ES-API, Pos, Scan, Frag: 70



Integration Results for DAD1 A, Sig=214,4 Ref=off

RetTim	Width	Area	Height	Area%	MS(+)
0.21	0.02	210.35	150.57	98.01	259
0.32	0.03	4.27	2.42	1.99	322

Integration Results for DAD1 B, Sig=254,4 Ref=off

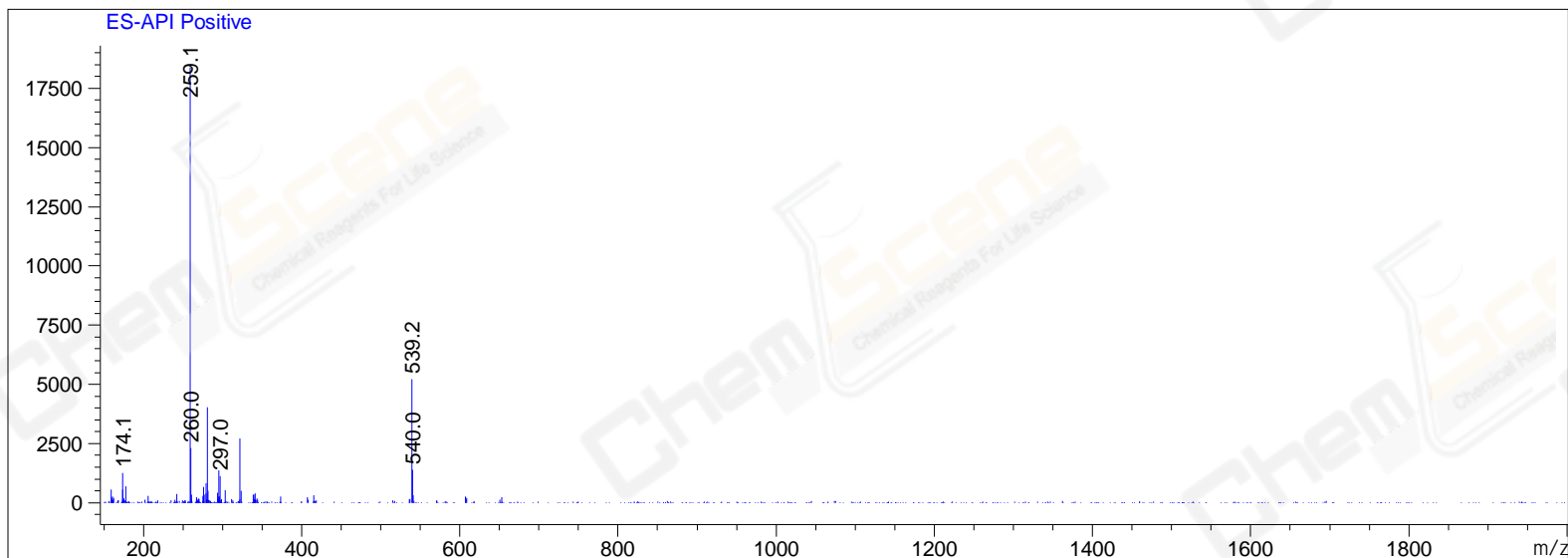
RetTim	Width	Area	Height	Area%	MS(+)
0.24	0.02	631.69	434.64	98.09	259
0.29	0.03	12.33	6.22	1.91	322

Integration Results for MSD1 TIC, MS File

RetTim	Width	Area	Height	Area%	MS(+)
0.17	0.08	603594.56	119022.37	100.00	259

Ret. Time: 0.17

<<<< POSITIVE SPECTRA >>>>



*** End of Report ***