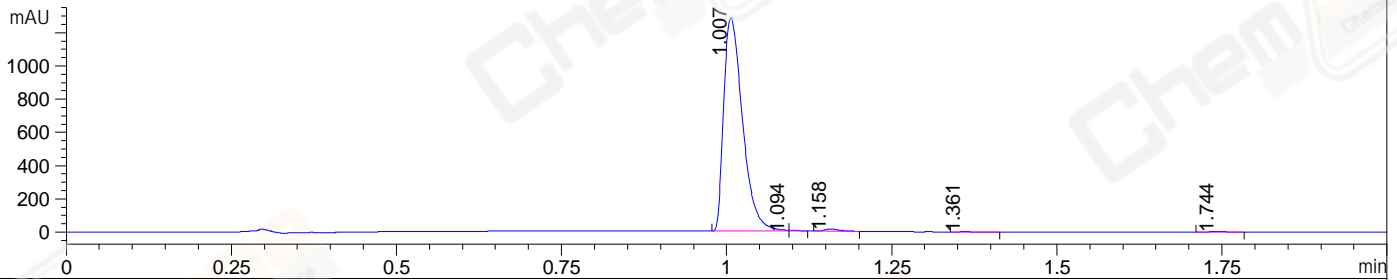
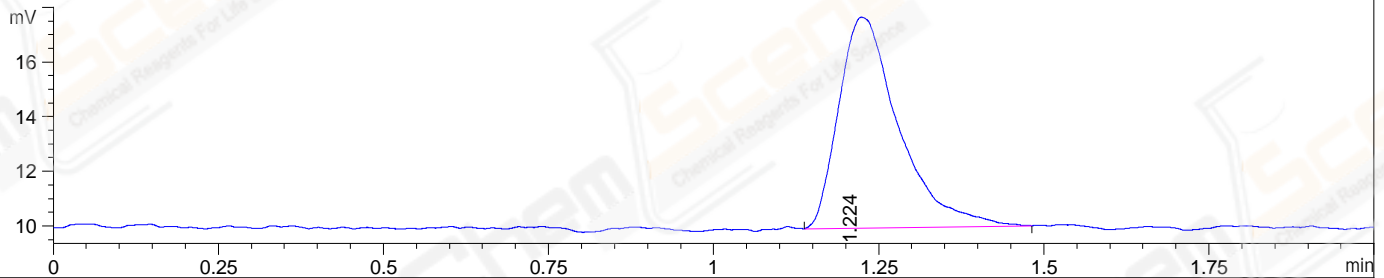


File ..022\LY\2022-01-20\BIZ2022-118-SCH3-041521.D Tgt Mass (EZ):  
 Injection Date : 20 Jan 22 1:52 pm +0800 Seq. Line : 0  
 Sample Name : BIZ2022-118-SCH3 Location : P1-F-10  
 Acq. Operator : LY\_2278 Inj : 1  
 Spec. Reported : MS Integration Inj Volume : 3 ul  
 Acq. Method : D:\LCMS\Methods\1-POS-UPLC2.0MIN(0.8ML)-(0-2000).M  
 Analysis Method : D:\LCMS\METHODS\1-POS-UPLC2.0MIN(0.8ML)-(0-2000).M  
 CAS NO. : 179463-17-3 Walkup method: '1-POS-2MIN(0-2000)' Target:  
 Method Info : Mobile Phase: A: water(0.01%TFA) B:ACN(0.01%TFA)  
 Gradient: 5% to 95%B within 0.6 min  
 Flow Rate : 0.8ml/min  
 Column : Poroshell 120 EC- C18, 2.1\*50mm,1.9um A-RP-749  
 Oven Temperature : 45C

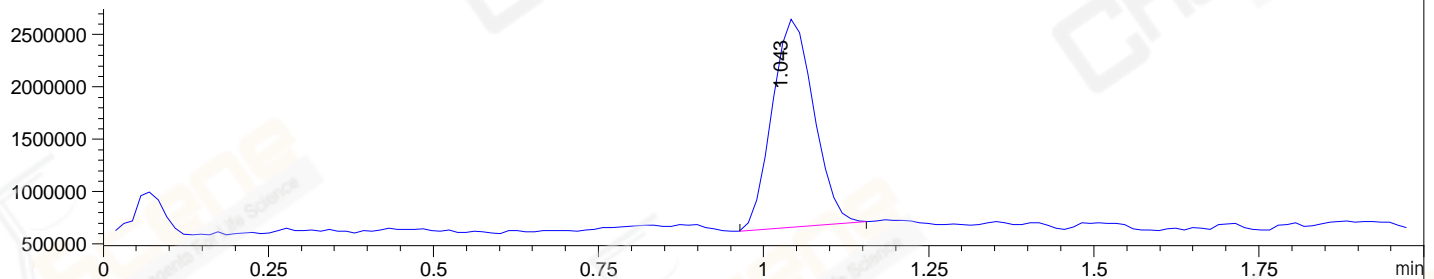
DAD1 A, Sig=214,4 Ref=off



ELS1 A, ELSD Signal



MSD1 TIC, MS File ES-API, Pos, Scan, Frag: 70



Integration Results for DAD1 A, Sig=214,4 Ref=off

RetTim	Width	Area	Height	Area%	MS (+)
1.01	0.03	2549.57	1283.20	98.63	547
1.09	0.01	4.18	4.70	0.16	547
1.16	0.03	20.16	12.63	0.78	83
1.36	0.04	4.04	1.85	0.16	83
1.74	0.03	6.94	3.62	0.27	83

Integration Results for ELS1 A, ELSD Signal

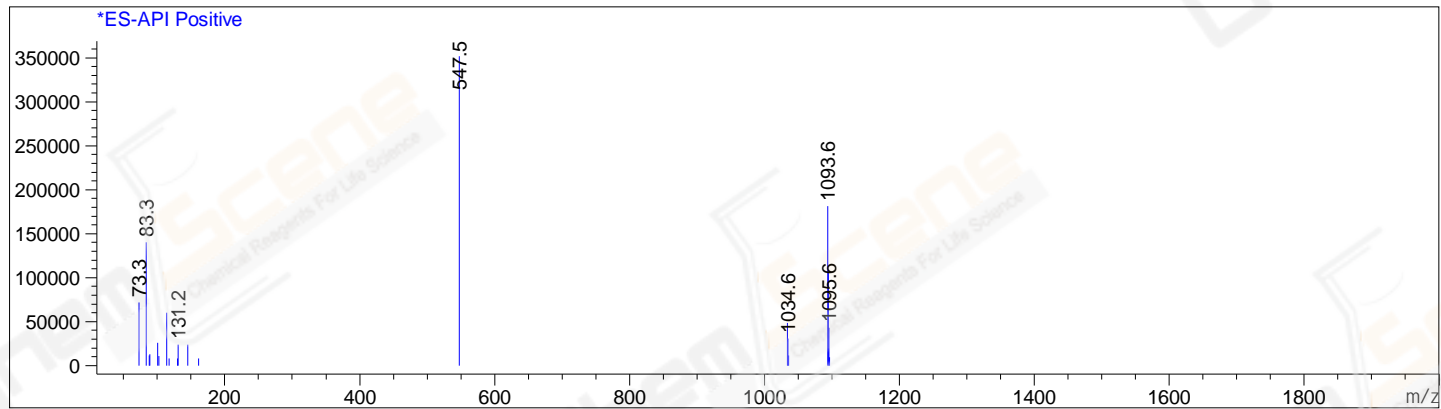
RetTim	Width	Area	Height	Area%	MS (+)
1.22	0.09	48.79	7.71	100.00	83

Integration Results for MSD1 TIC, MS File

RetTim	Width	Area	Height	Area%	MS (+)
1.04	0.07	8738790.00	1986852.38	100.00	547

Ret. Time: 1.04

<<<< POSITIVE SPECTRA >>>>



\*\*\* End of Report \*\*\*