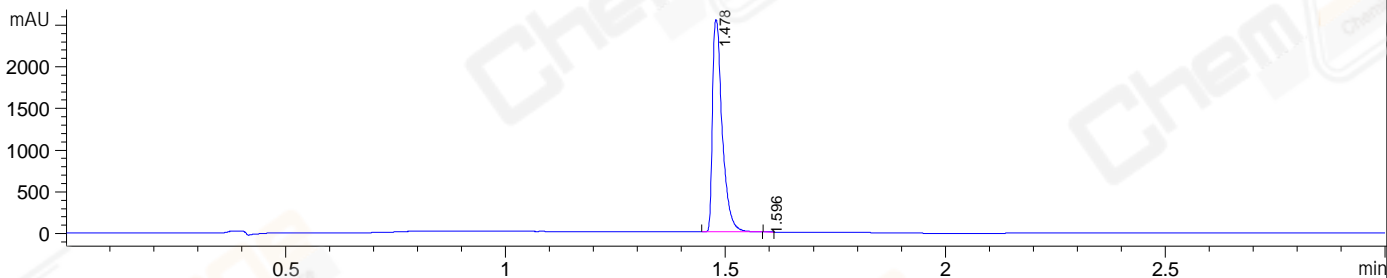
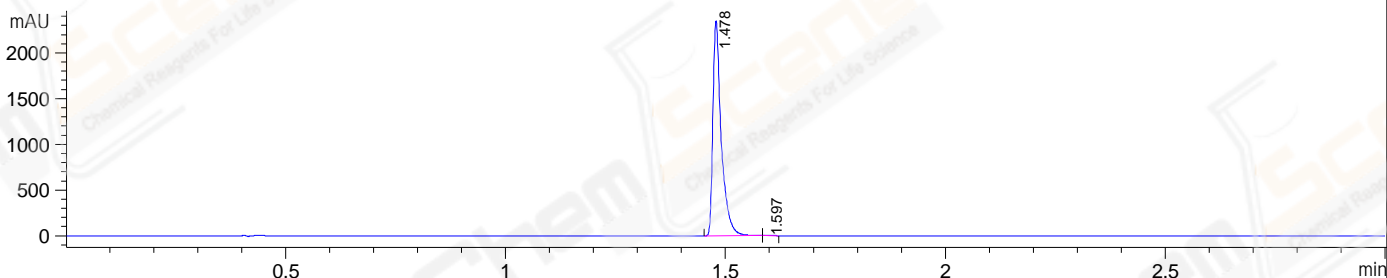


File E:\ChemStation\1\DATA\2023\2023-04\2023-04-24\CPK2023-424-129646-LCMS-20-003019.D
 Injection Date : 24-Apr-23, 17:48:39 Tgt Mass(EZX) :
 Sample Name : CPK2023-424-129646 Location : P1-A-09
 Acq. Operator : LY_2278 Inj : 1
 Spec. Reported : MS Integration Inj Volume : 5 ul
 Acq. Method : E:\ChemStation\1\Methods\1-POS-3MIN(1.8ML)-(150-1000).M
 Analysis Method : E:\CHEMSTATION\1\METHODS\1-POS-3MIN(1.8ML)-(150-1000).M
 CAS NO. : 456-12-2 WalkUp method: '1-POS-3MIN' Project: CPK2023
 Method Info : Mobile Phase: A: water(0.01%FA) B:ACN(0.01%FA)
 Flow Rate :1.8ml/min
 Column :SunFire C18, 4.6*50mm,3.5um
 Oven Temperature : 45C

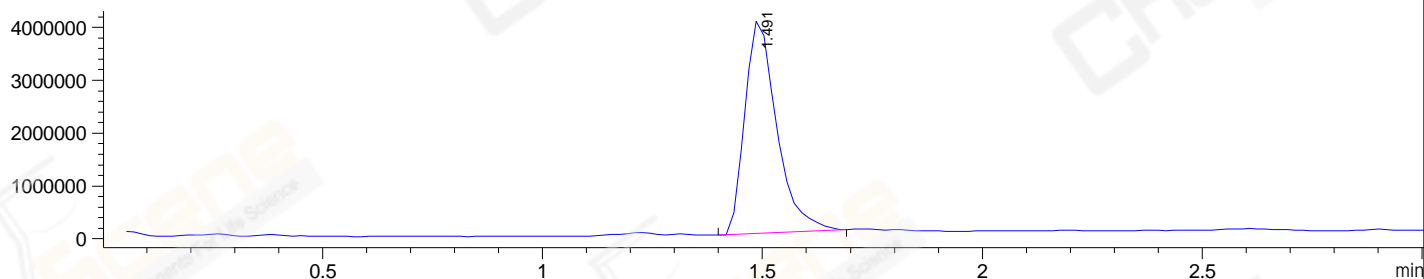
DAD1 A, Sig=214,4 Ref=off



DAD1 B, Sig=254,4 Ref=off



MSD1 TIC, MS File ES-API, Pos, Scan, Frag: 70



Integration Results for DAD1 A, Sig=214,4 Ref=off

RetTim	Width	Area	Height	Area%
1.48	0.02	3921.43	2542.18	99.95
1.60	0.01	2.08	2.48	0.05

Integration Results for DAD1 B, Sig=254,4 Ref=off

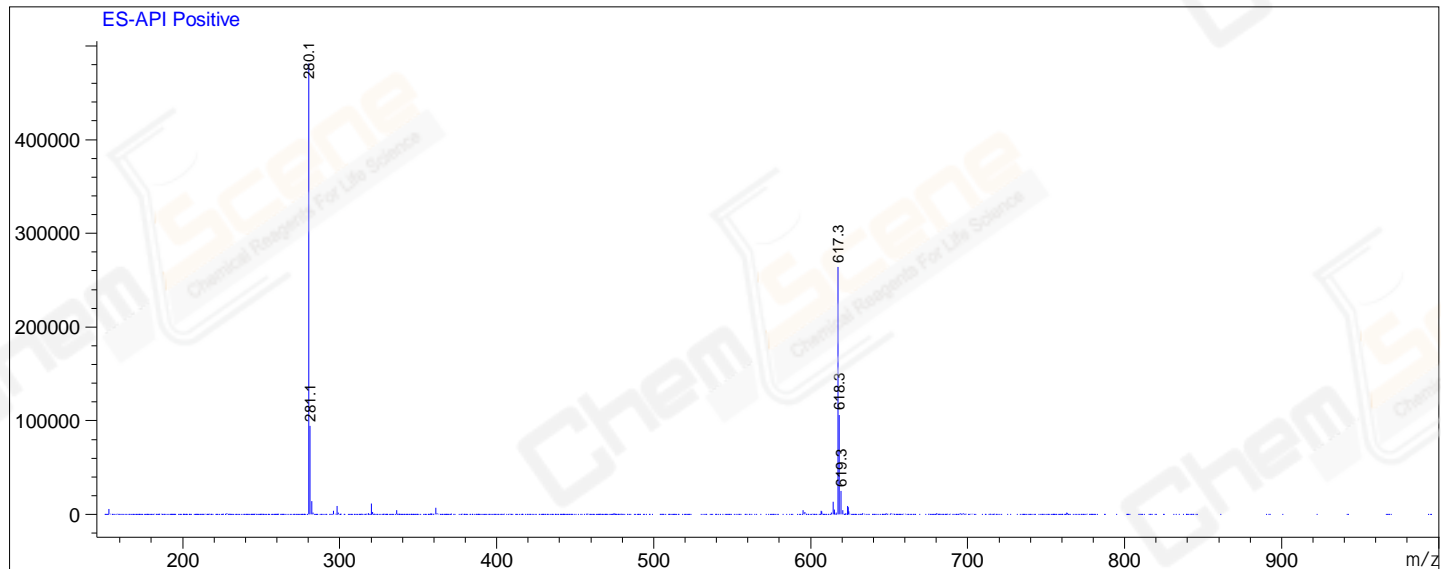
RetTim	Width	Area	Height	Area%
1.48	0.02	3108.23	2347.35	99.93
1.60	0.02	2.03	1.86	0.07

Integration Results for MSD1 TIC, MS File

RetTim	Width	Area	Height	Area%
1.49	0.07	20410986.00	4051623.50	100.00

Ret. Time: 1.49

<<<< POSITIVE SPECTRA >>>>



*** End of Report ***