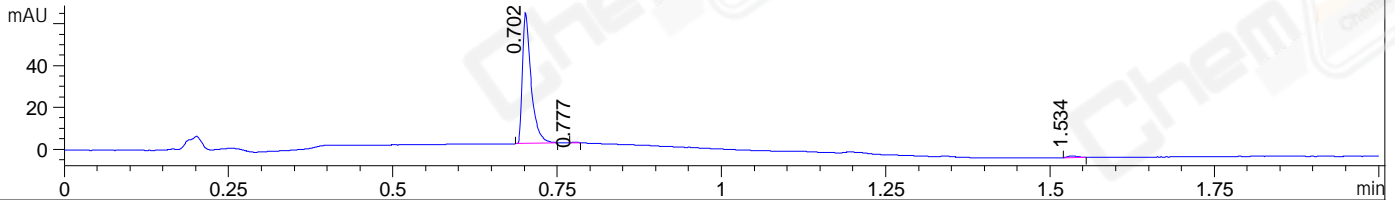
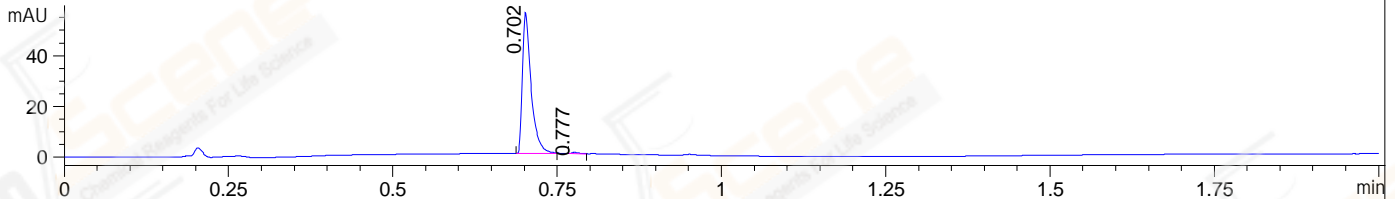


File ..22\LY\2022-01-17\WMX11575-001-06-2-041075.D Tgt Mass (EZ):  
 Injection Date : 17 Jan 22 11:48 am +0800 Seq. Line : 0  
 Sample Name : WMX11575-001-06-2 Location : P1-E-07  
 Acq. Operator : LY\_2278 Inj : 1  
 Spec. Reported : MS Integration Inj Volume : 0.2 ul  
 Acq. Method : D:\LCMS\Methods\1-POS-UPLC2.0MIN(0.8ML)-(150-1000).M  
 Analysis Method : D:\LCMS\METHODS\1-POS-UPLC2.0MIN(0.8ML)-(150-1000).M  
 CAS NO. : 842148-40-7 Walkup method: '1-POS-2MIN' Target:  
 Method Info : Mobile Phase: A: water(0.01%TFA) B:ACN(0.01%TFA)  
 Gradient: 5% to 95%B within 0.6 min  
 Flow Rate : 0.8ml/min  
 Column :Poroshell 120 EC- C18, 2.1\*50mm,1.9um  
 Oven Temperature : 45C

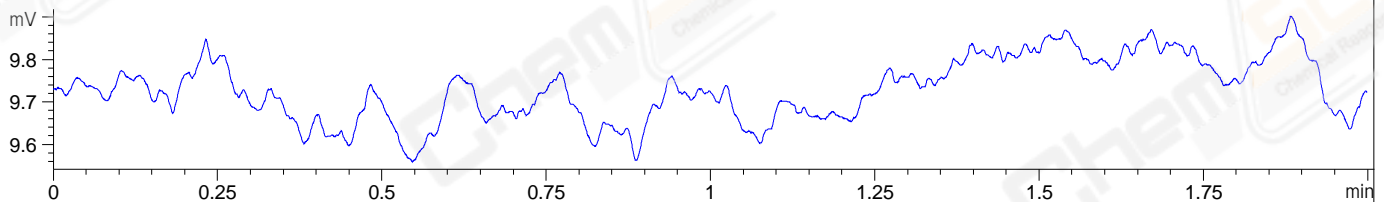
DAD1 A, Sig=214,4 Ref=off



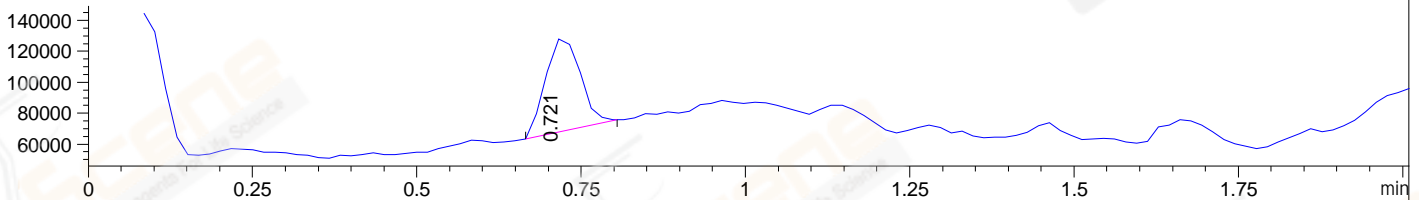
DAD1 B, Sig=254,4 Ref=off



ELS1 A, ELSD Signal



MSD1 TIC, MS File ES-API, Pos, Scan, Frag: 70



Integration Results for DAD1 A, Sig=214,4 Ref=off

RetTim	Width	Area	Height	Area%	MS (+)
0.70	0.02	57.51	63.01	98.04	358
0.78	0.01	0.26	0.45	0.44	161
1.53	0.02	0.89	0.77	1.52	161

Integration Results for DAD1 B, Sig=254,4 Ref=off

RetTim	Width	Area	Height	Area%	MS (+)
0.70	0.02	51.17	55.95	99.27	358
0.78	0.01	0.38	0.49	0.73	161

Integration Results for ELS1 A, ELSD Signal

RetTim	Width	Area	Height	Area%	MS (+)
--------	-------	------	--------	-------	--------

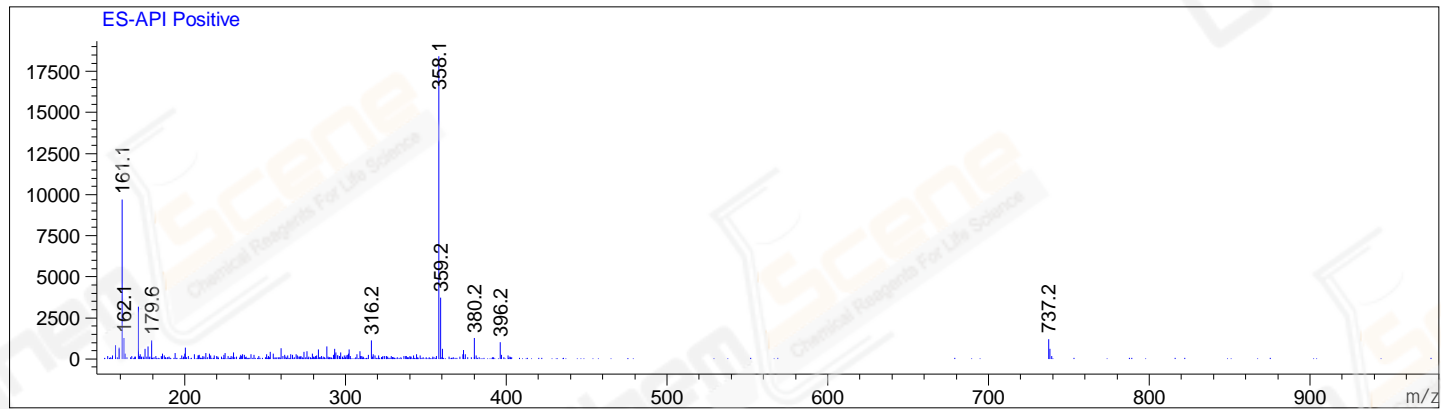
Integration Results for MSD1 TIC, MS File

0.72      0.06      220795.42      61434.89      100.00      358

RetTim	Width	Area	Height	Area%	MS(+)
0.72	0.06	220795.42	61434.89	100.00	358

Ret. Time: 0.72

<<<< POSITIVE SPECTRA >>>>



\*\*\* End of Report \*\*\*