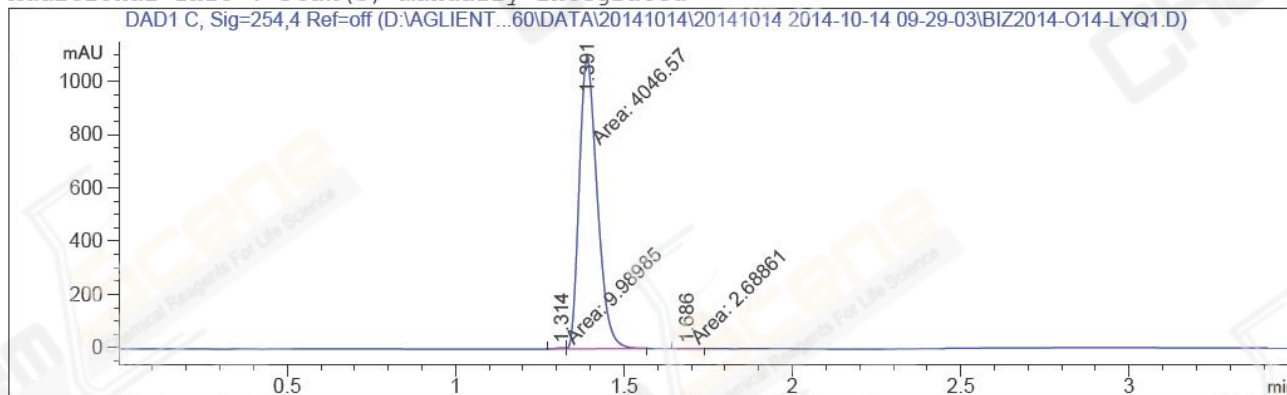


=====

Acq. Operator	: Li Shan(LCMS-02)	Seq. Line	: 19
Acq. Instrument	: HY-LCMS-02	Location	: Vial 16
Injection Date	: 10/14/2014 11:02:09 AM	Inj	: 1
		Inj Volume	: 3.000 µl
Different Inj Volume from Sample Entry! Actual Inj Volume : 2.000 µl			
Acq. Method	: D:\AGLIENT 1260\DATA\20141014\20141014 2014-10-14 09-29-03\100-1000MS+3MIN.M		
Last changed	: 10/14/2014 9:29:03 AM by Li Shan(LCMS-02)		
Analysis Method	: D:\AGLIENT 1260\METHOD\100-1000MS+3MIN.M		
Last changed	: 10/14/2014 12:28:08 PM by Li Shan(LCMS-02) (modified after loading)		
Method Info	: Postive,MS:100-1000,Column ID:A-RP-102,40°C		
Catalog No	: CS-0472 Batch#13423 A-RP-102		

Additional Info : Peak(s) manually integrated



=====  
Area Percent Report  
=====

Sorted By : Signal  
Multiplier : 1.0000  
Dilution : 1.0000  
Do not use Multiplier & Dilution Factor with ISTDs

Signal 1: DAD1 C, Sig=254,4 Ref=off

Peak #	RetTime [min]	Type	Width [min]	Area [mAU*s]	Height [mAU]	Area %
1	1.314	MF	0.0407	9.98985	4.08733	0.2461
2	1.391	FM	0.0612	4046.56885	1101.26025	99.6877
3	1.686	MM	0.0520	2.68861	8.61918e-1	0.0662

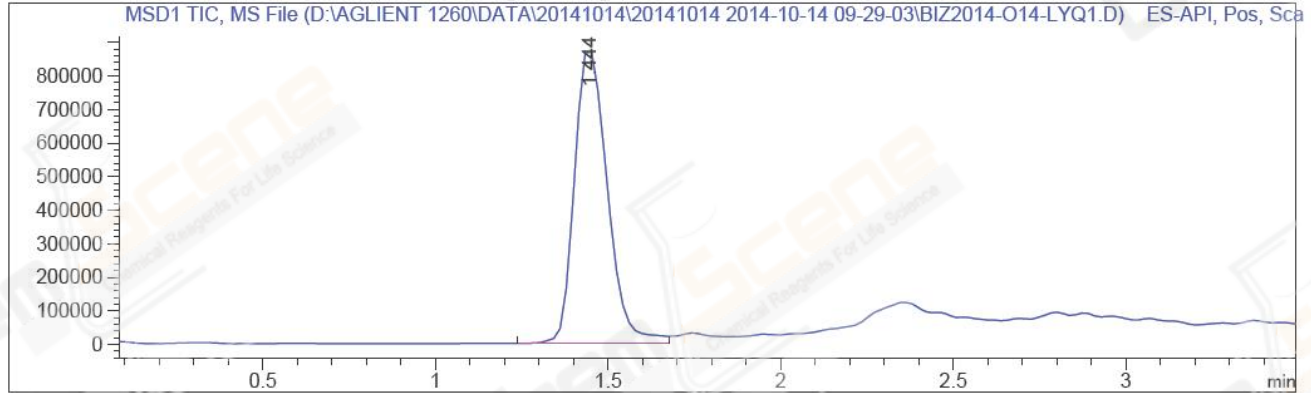
Totals : 4059.24731 1106.20950

=====  
\*\*\* End of Report \*\*\*

```
=====
Acq. Operator   : Li Shan(LCMS-02)                Seq. Line :   19
Acq. Instrument : HY-LCMS-02                      Location  : Vial 16
Injection Date  : 10/14/2014 11:02:09 AM          Inj       :    1
                                                    Inj Volume: 3.000 µl
Different Inj Volume from Sample Entry! Actual Inj Volume : 2.000 µl
Acq. Method     : D:\AGLIENT 1260\DATA\20141014\20141014 2014-10-14 09-29-03\100-1000MS+3MIN.
M
Last changed    : 10/14/2014 9:29:03 AM by Li Shan(LCMS-02)
Analysis Method : D:\AGLIENT 1260\METHOD\100-1000MS+3MIN.M
Last changed    : 10/14/2014 12:29:41 PM by Li Shan(LCMS-02)
                (modified after loading)
Method Info     : Postive,MS:100-1000,Column ID:A-RP-102,40°C

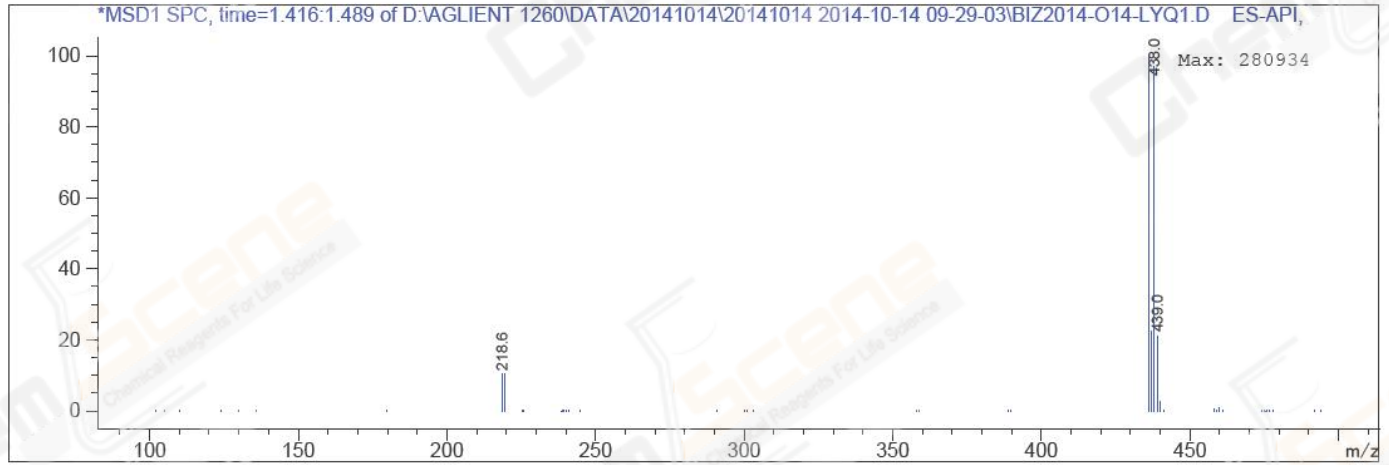
Catalog No     : CS-0472 Batch#13423
                A-RP-102
=====
```

Additional Info : Peak(s) manually integrated



MS Signal: MSD1 TIC, MS File, ES-API, Pos, Scan, Frag: 50  
Spectra averaged over upper half of peaks.  
Noise Cutoff: 1000 counts.  
Reportable Ion Abundance: > 10%.

Retention Time (MS)	MS Area	Mol. Weight or Ion
1.444	5848300	439.00 I
		438.00 I
		437.10 I
		436.05 I
		219.45 I
		218.55 I



\*\*\* End of Report \*\*\*