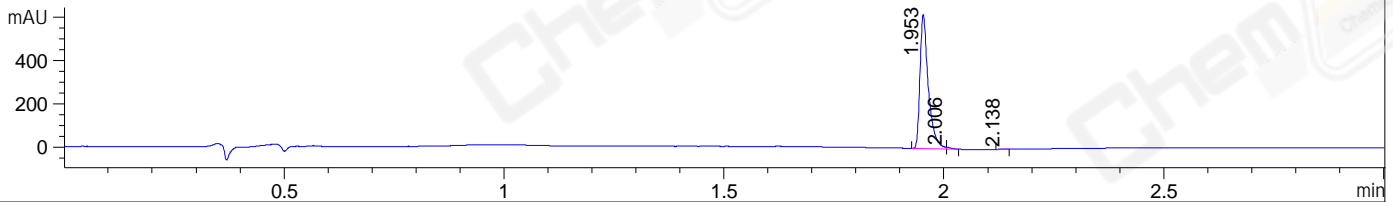
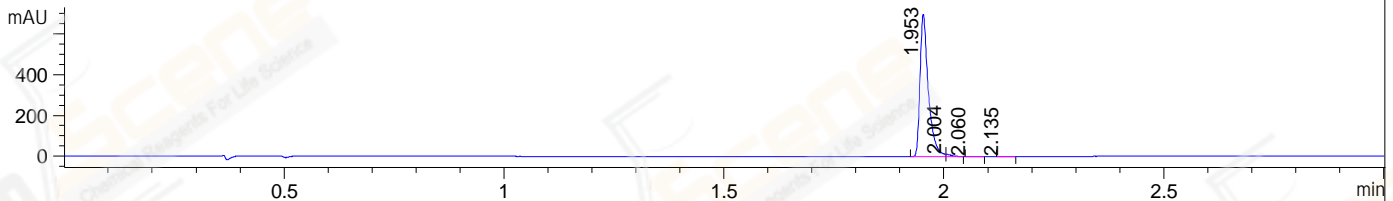


File ..DATA\2019\20191114\759\CPK2019-N12-13512-.D Tgt Mass (CHM):  
Injection Date : 14 Nov 19 12:32 pm +0800 Seq. Line : 49  
Sample Name : CPK2019-N12-13512 Location : P1-A-05  
Acq. Operator : ZJ\_1432 Inj : 1  
Spec. Reported : MS Integration Inj Volume : 8 ul  
Acq. Method : D:\Chem32\1\data\2019\20191114\759\1-POS-3MIN.M  
Analysis Method : D:\CHEM32\1\DATA\2019\20191114\759\1-POS-3MIN.M  
Catalog No : CS-0216 Batch#13512  
Method Info : Mobile Phase: A: water(0.01%TFA) B:ACN(0.01%TFA)  
Gradient: 5% to 95%B within 1.3 min  
Flow Rate :1.8ml/min  
Column :SunFire C18, 4.6\*50mm,3.5um A-RP-433  
Oven Temperature : 45□

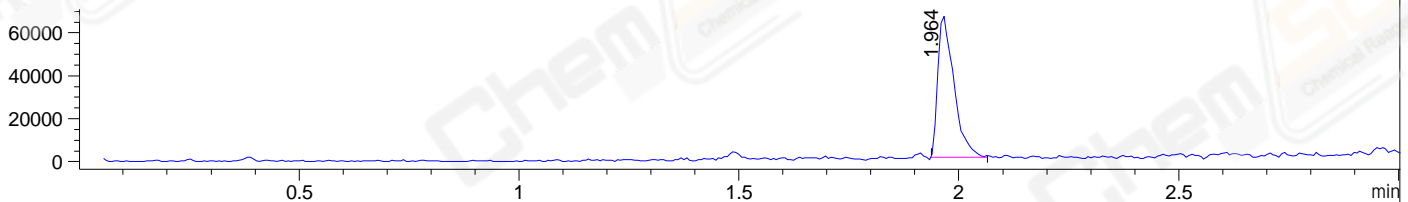
DAD1 B, Sig=214,4 Ref=off



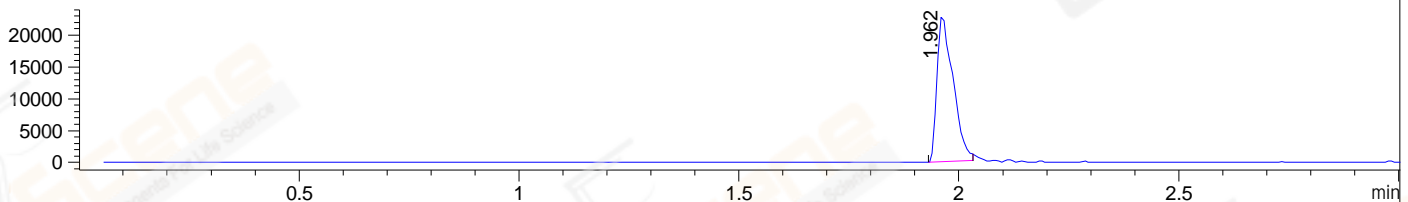
DAD1 C, Sig=254,4 Ref=off



MSD1 TIC, MS File ES-API, Pos, Scan, Frag: 70



Ion 490, MSD1 490, Target Mass 489 +H Positive, EIC=489.7:490.7



Integration Results for DAD1 B, Sig=214,4 Ref=off

RetTim	Width	Area	Height	Area%	MS (+)
1.95	0.02	815.00	620.47	99.09	490
2.01	0.01	6.14	8.50	0.75	490
2.14	0.02	1.31	1.26	0.16	ND

Integration Results for DAD1 C, Sig=254,4 Ref=off

RetTim	Width	Area	Height	Area%	MS (+)
1.95	0.02	921.55	699.92	98.57	490
2.00	0.01	10.70	11.98	1.14	490
2.06	0.02	0.75	0.68	0.08	ND
2.14	0.02	1.95	1.56	0.21	ND

Integration Results for MSD1 TIC, MS File

RetTim	Width	Area	Height	Area%	MS (+)
1.96	0.04	167246.00	65970.66	100.00	490

Ret. Time: 1.96

<<<< POSITIVE SPECTRA >>>>

ES-API Positive

