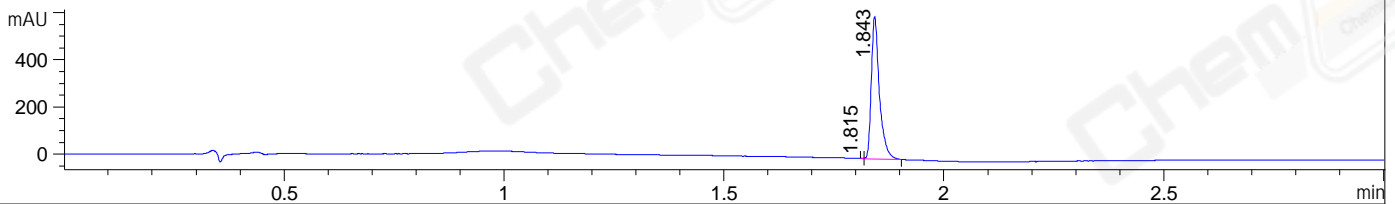
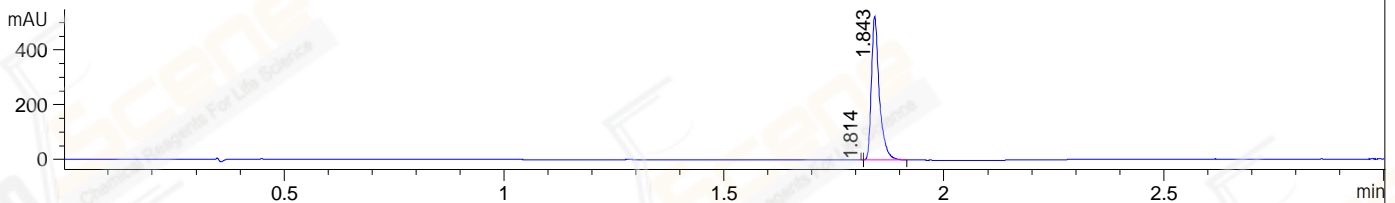


File ..DATA\2019\20191103\754\CPK2019-O30-13569-.D Tgt Mass (CHM):
 Injection Date : 3 Nov 19 11:30 am +0800 Seq. Line : 29
 Sample Name : CPK2019-O30-13569 Location : P1-B-09
 Acq. Operator : ZJ_1432 Inj : 1
 Spec. Reported : MS Integration Inj Volume : 2 ul
 Acq. Method : D:\Chem32\1\data\2019\20191103\754\1-POS-3MIN.M
 Analysis Method : D:\CHEM32\1\DATA\2019\20191103\754\1-POS-3MIN.M
 Catalog No : CS-2016 Batch# 13569
 Method Info : Mobile Phase: A: water(0.01%TFA) B:ACN(0.01%TFA)
 Gradient: 5% to 95%B within 1.3 min
 Flow Rate :1.8ml/min
 Column :SunFire C18, 4.6*50mm,3.5um A-RP-433
 Oven Temperature : 45□

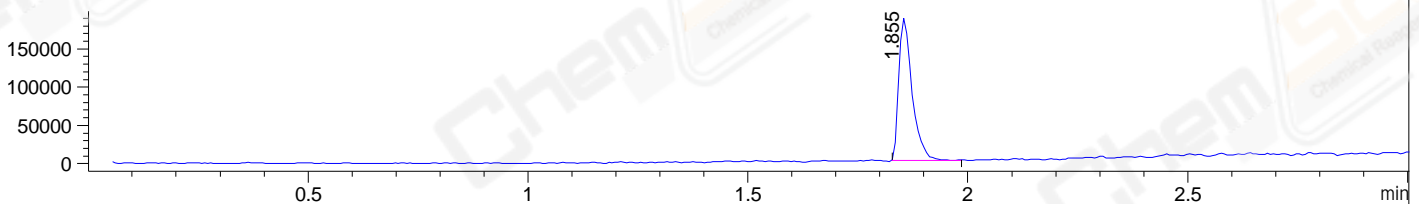
DAD1 B, Sig=214,4 Ref=off



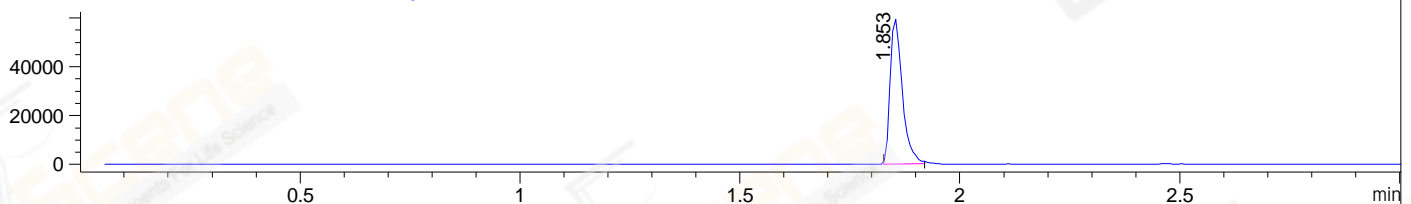
DAD1 C, Sig=254,4 Ref=off



MSD1 TIC, MS File ES-API, Pos, Scan, Frag: 70



Ion 379.10718, MSD1 379.10718, Target Mass 378.10718 +H Positive, EIC=378.81:379.81



Integration Results for DAD1 B, Sig=214,4 Ref=off

RetTim	Width	Area	Height	Area%	MS (+)
1.81	0.01	0.38	1.14	0.05	ND
1.84	0.02	768.84	603.10	99.95	379

Integration Results for DAD1 C, Sig=254,4 Ref=off

RetTim	Width	Area	Height	Area%	MS (+)
1.81	0.00	0.10	0.43	0.01	ND
1.84	0.02	656.20	524.67	99.99	379

Integration Results for MSD1 TIC, MS File

RetTim	Width	Area	Height	Area%	MS (+)
1.85	0.03	389076.91	186230.44	100.00	379

Ret. Time: 1.85

<<<< POSITIVE SPECTRA >>>>

ES-API Positive

