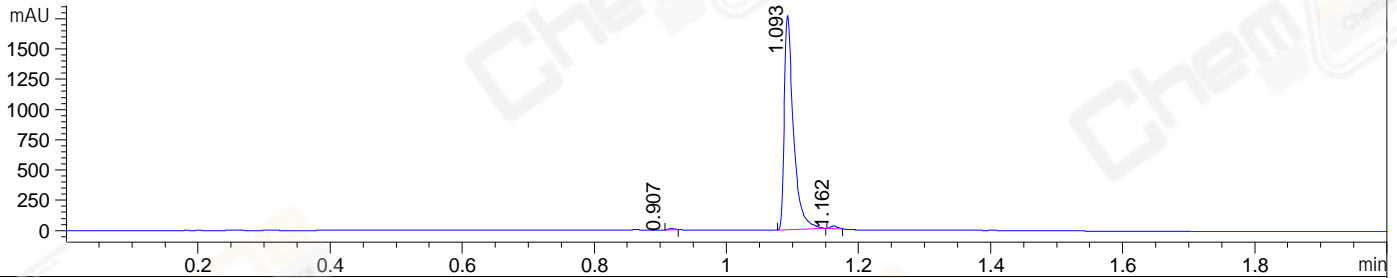
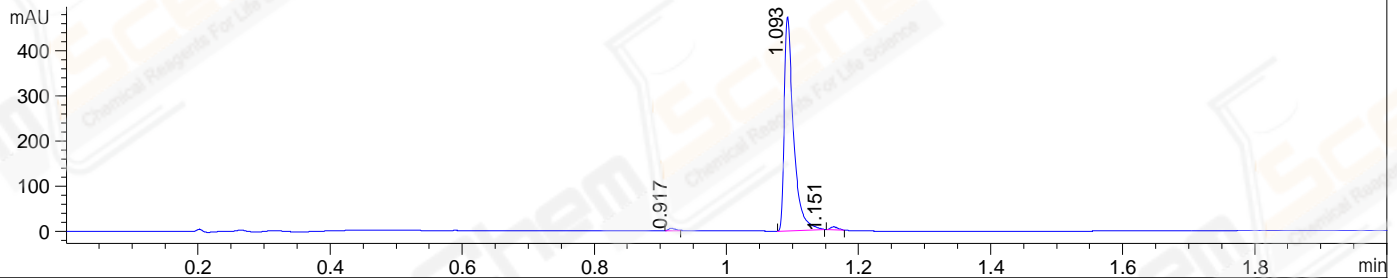


File ..02-14\BIZ2022-214-SCH14-UPLC-MS-04-009393.D Tgt Mass (EZX):
 Injection Date : 14-Feb-22, 19:06:00 Seq. Line : 0
 Sample Name : BIZ2022-214-SCH14 Location : P2-F-06
 Acq. Operator : LY_2278 Inj : 1
 Spec. Reported : MS Integration Inj Volume : 0.5 ul
 Acq. Method : E:\Chem32\1-Methods\1-POS-UPLC2.0MIN(0.8)(150-1000).M
 Analysis Method : E:\CHEM32\1\METHODS\1-POS-UPLC2.0MIN(0.8)(150-1000).M
 CAS NO. : 1185329-96-7 WalkUp method: '1-POS-2MIN' Target:
 Method Info : Mobile Phase: A: water(0.01%TFA) B:ACN(0.01%TFA)
 Gradient: 5% to 95%B within 1.3 min
 Flow Rate : 0.8ml/min
 Column :Poroshell 120 EC- C18, 2.1*50mm,1.9um
 Oven Temperature : 45C

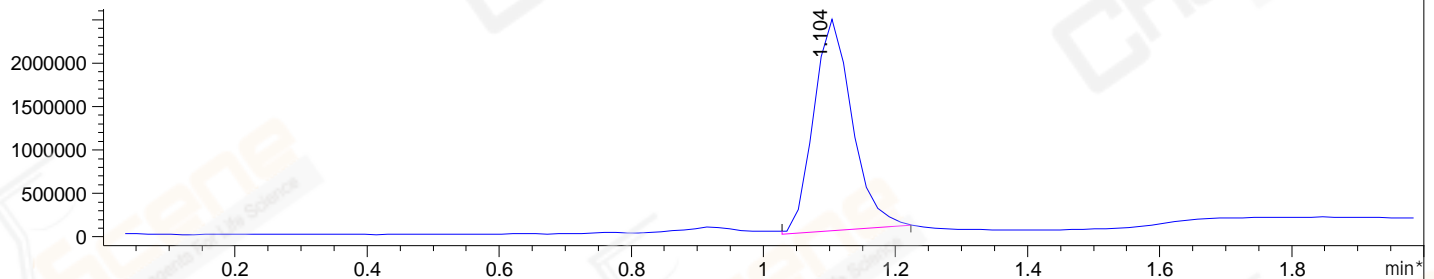
DAD1 A, Sig=214,4 Ref=off



DAD1 B, Sig=254,4 Ref=off



*MSD1 TIC, MS File ES-API, Pos, Scan, Frag: 70



Integration Results for DAD1 A, Sig=214,4 Ref=off

RetTim	Width	Area	Height	Area%	MS (+)
0.91	0.01	7.34	0.21	0.42	161
1.09	0.02	1707.18	1774.21	98.69	437
1.16	0.01	15.29	21.68	0.88	437

Integration Results for DAD1 B, Sig=254,4 Ref=off

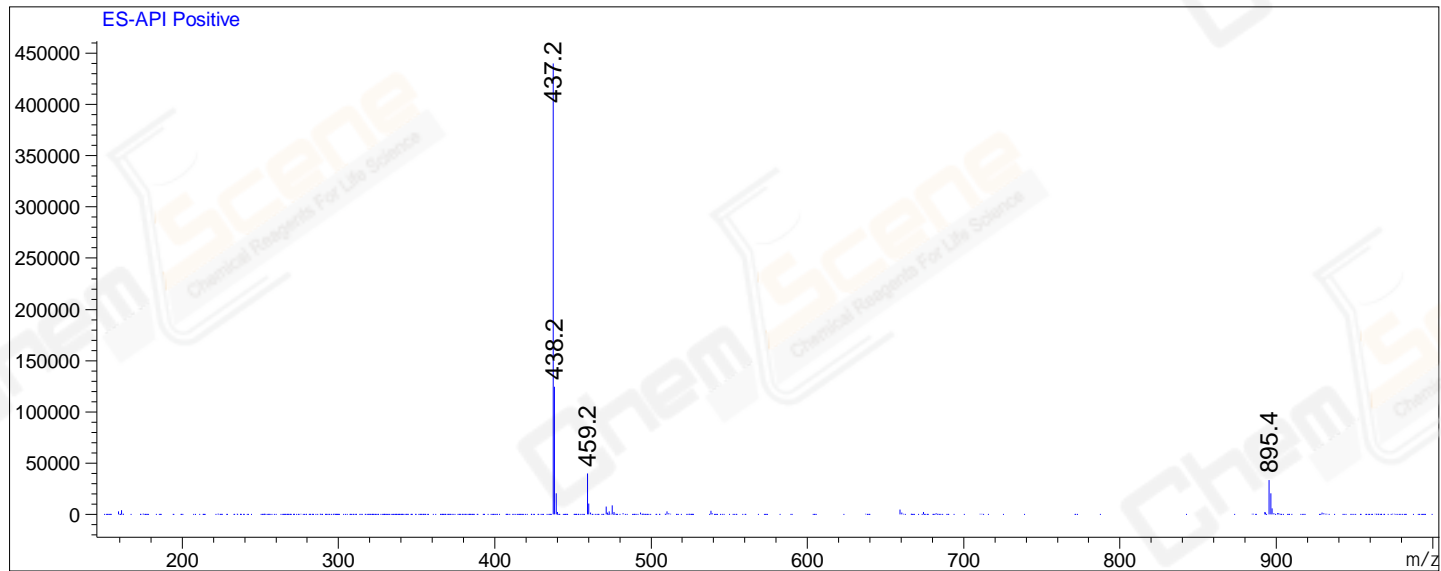
RetTim	Width	Area	Height	Area%	MS (+)
0.92	0.01	3.99	5.33	0.85	161
1.09	0.02	457.87	475.93	98.03	437
1.15	0.01	5.20	0.25	1.11	437

Integration Results for MSD1 TIC, MS File

RetTim	Width	Area	Height	Area%	MS (+)
1.10	0.07	9925173.00	2473868.75	100.00	437

Ret. Time: 1.10

<<<< POSITIVE SPECTRA >>>>



*** End of Report ***