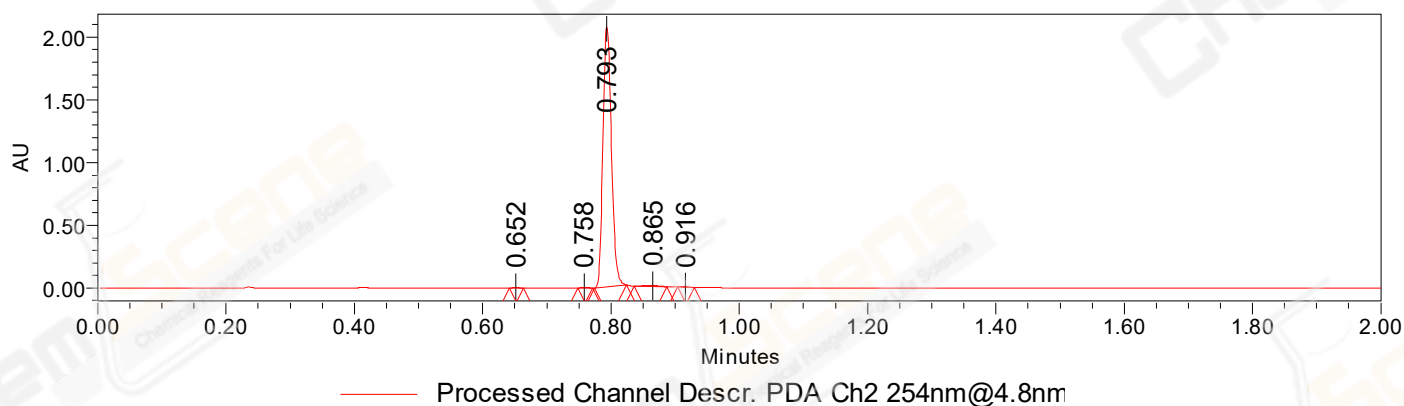


SAMPLE INFORMATION

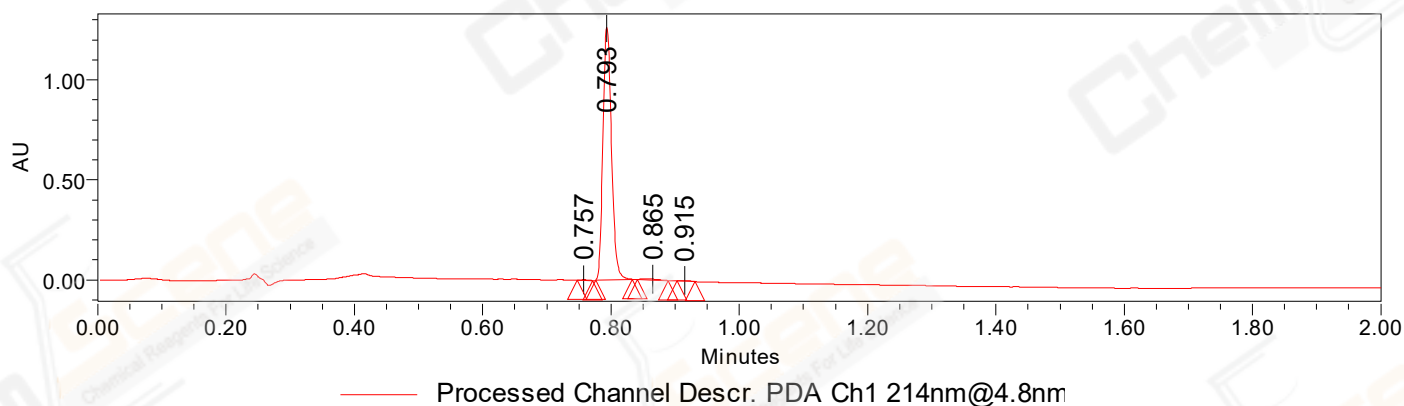
CAS NO.: 871307-18-5
Sample information:
Vial: 1:A,6
Injection #: 1
Injection Volume: 0.50 ul
Run Time: 2.8 Minutes
Sample Set Name: 20220216

Acquired By: LY
Date Acquired: 2/16/2022 5:35:36 PM CST
Acq. Method Set: 1_POS_2MIN
Date Processed: 2/17/2022 9:45:09 AM CST,
Processing Method: PDA_01, MS_scan
Channel Name: PDA Ch1 214nm@4.8nm, MS TIC,
Column Name:

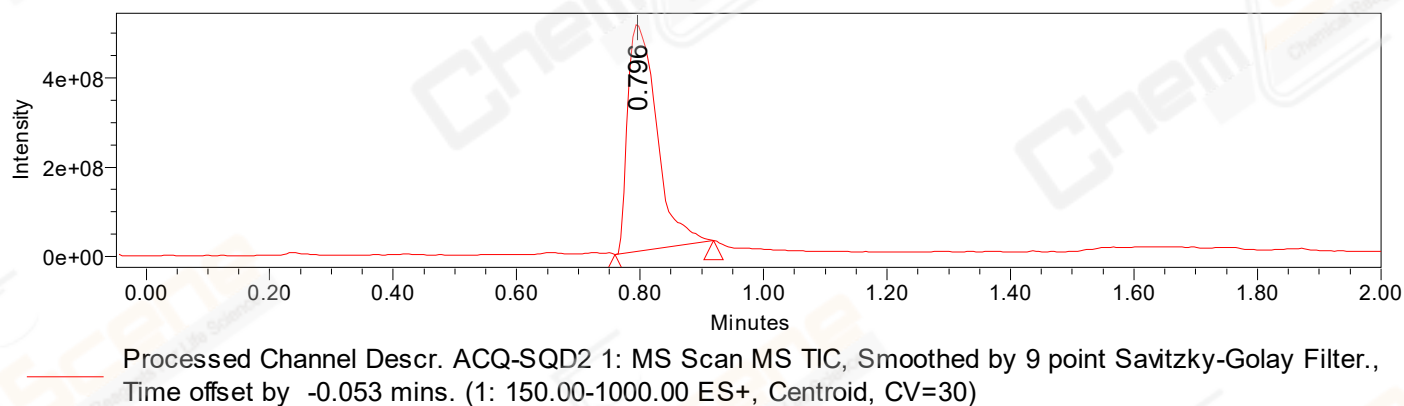
Auto-Scaled Chromatogram



Auto-Scaled Chromatogram



Auto-Scaled Chromatogram



Peak Results
Channel Name: PDA Ch2 254nm@4.8nm

	RT	Width (sec)	Area	Height	% Area	Base Peak (Combined) (m/z)	Channel Name
1	0.652	1.300	2079	2896	0.11	186.18	PDA Ch2 254nm@4.8nm
2	0.758	1.400	3218	4246	0.17	195.60	PDA Ch2 254nm@4.8nm
3	0.793	3.000	1901121	2070609	99.08	216.07	PDA Ch2 254nm@4.8nm
4	0.865	3.000	10188	5899	0.53	203.49	PDA Ch2 254nm@4.8nm
5	0.916	1.550	2087	2486	0.11	224.51	PDA Ch2 254nm@4.8nm

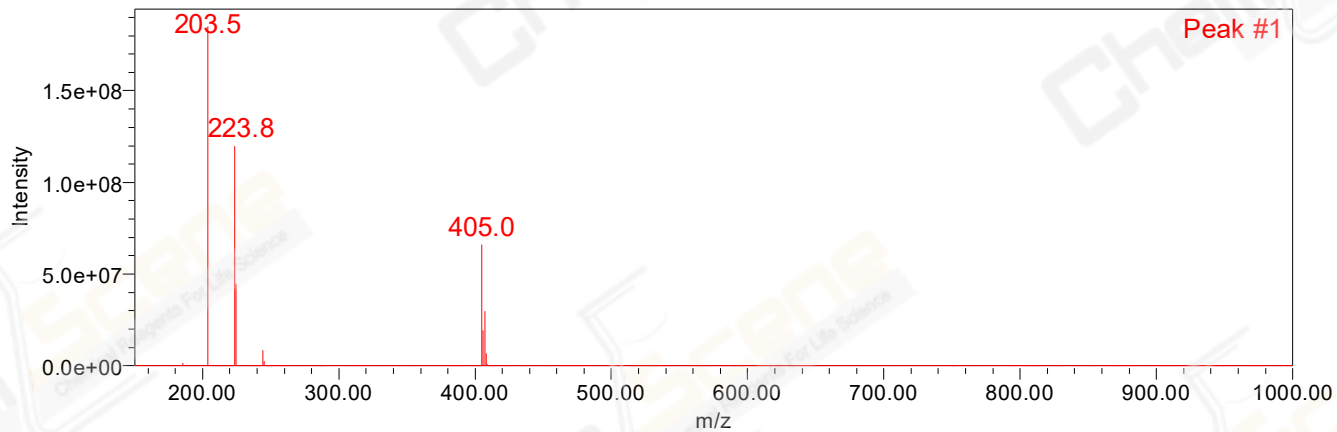
Peak Results
Channel Name: PDA Ch1 214nm@4.8nm

	RT	Width (sec)	Area	Height	% Area	Base Peak (Combined) (m/z)	Channel Name
1	0.757	1.450	2459	3154	0.21	195.60	PDA Ch1 214nm@4.8nm
2	0.793	3.450	1165246	1263456	99.02	215.85	PDA Ch1 214nm@4.8nm
3	0.865	2.900	5870	3468	0.50	203.46	PDA Ch1 214nm@4.8nm
4	0.915	1.650	3189	3584	0.27	224.51	PDA Ch1 214nm@4.8nm

Peak Results
Channel Name: MS TIC

	RT	Width (sec)	Area	Height	% Area	Base Peak (Combined) (m/z)	Channel Name
1	0.796	9.574	1654555915	513190074	100.00	203.37	MS TIC

Match Plot



Retention Time 0.796 Channel Name MS TIC