

File ..8-1 2017-08-28 13-06-16\CPK2017-828-13891.D Tgt Mass (CHM):

Injection Date : 28 Aug 17 4:42 pm +0800 Seq. Line : 41

Sample Name : CPK2017-828-13891 Location : P2-A-02

Acq. Operator : SYSTEM Inj : 1

Spec. Reported : MS Integration Inj Volume : 1 ul

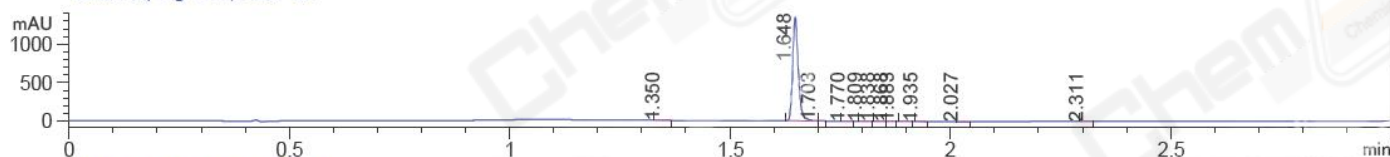
Acq. Method : D:\LCMS03\Data\20170828\20170828-1 2017-08-28 13-06-16\1-POS-3MIN.M

Analysis Method : D:\LCMS03\Data\20170828\20170828-1 2017-08-28 13-06-16\1-POS-3MIN.M

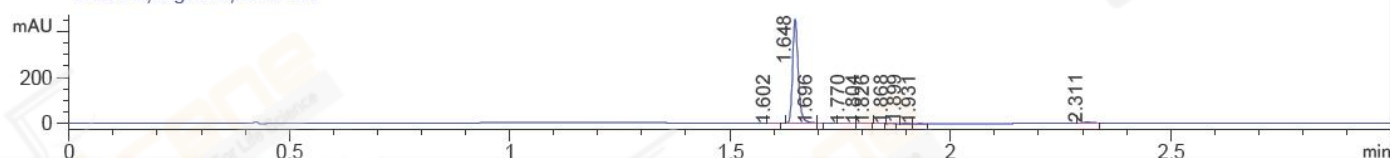
Catalog No : CS-1496 Batch#13891

Method Info : Column: A-RP-186 1.8ml/min 45C 5-95A(1.3min)

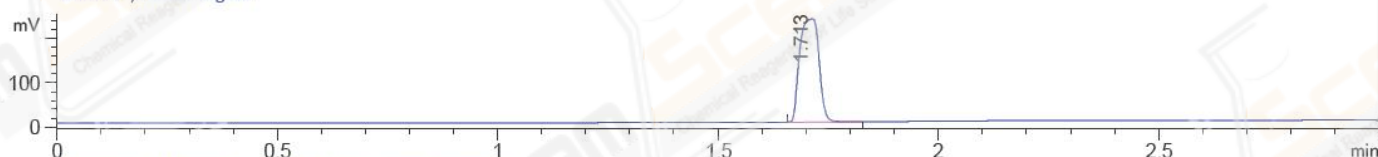
DAD1 A, Sig=214,4 Ref=off



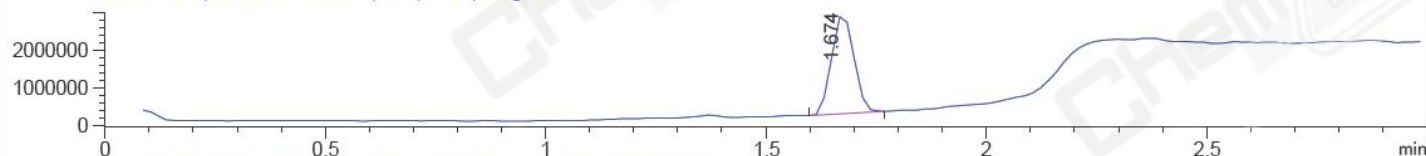
DAD1 B, Sig=254,4 Ref=off



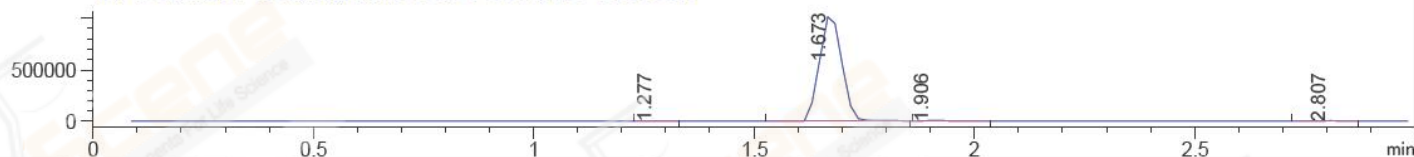
ELS1 A, ELSD Signal



MSD1 TIC, MS File ES-API, Pos, Scan, Frag: 70



Ion 438.2, MSD1 438.2, Target Mass 438.2 Positive, EIC=437.9:438.9



Integration Results for DAD1 A, Sig=214,4 Ref=off

RetTim	Width	Area	Height	Area%	MS (+)
1.35	0.02	5.41	4.98	0.45	233
1.65	0.01	1189.48	1350.54	98.56	440
1.70	0.01	2.35	3.41	0.19	440
1.77	0.02	0.79	0.72	0.07	233
1.81	0.02	1.08	0.83	0.09	233
1.84	0.02	0.85	0.83	0.07	233
1.87	0.01	0.49	0.58	0.04	233
1.88	0.01	2.70	-0.16	0.22	233
1.93	0.02	1.03	1.03	0.09	338
2.03	0.02	1.19	1.23	0.10	338
2.31	0.02	1.52	1.57	0.13	105

Integration Results for DAD1 B, Sig=254,4 Ref=off

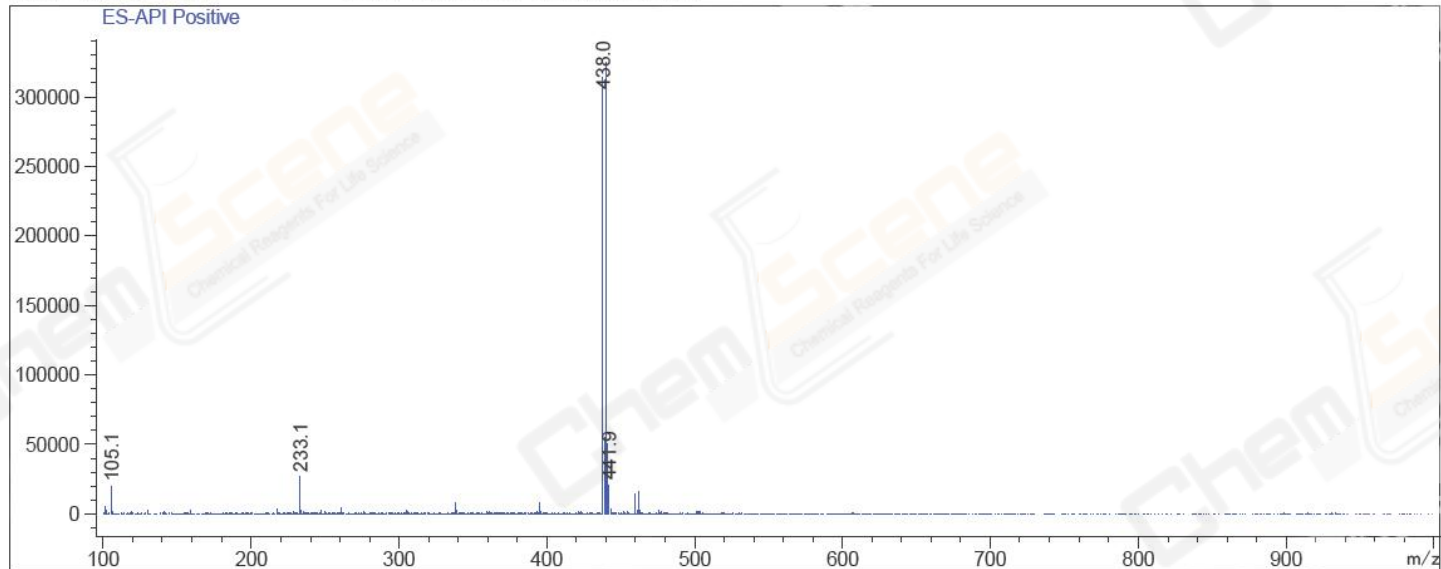
RetTim	Width	Area	Height	Area%	MS (+)
1.60	0.01	0.49	0.59	0.12	233
1.65	0.01	401.61	452.49	98.01	440
1.70	0.01	0.64	0.71	0.16	440

1.77	0.02	0.26	0.22	0.06	233
1.80	0.02	0.35	0.27	0.09	233
1.83	0.01	0.16	0.04	0.04	233
1.87	0.01	0.17	0.22	0.04	233
1.90	0.01	0.94	1.07	0.23	233
1.93	0.02	0.57	0.59	0.14	338
2.31	0.02	4.58	3.92	1.12	105

Integration Results for MSD1 TIC, MS File

RetTim	Width	Area	Height	Area%	MS (+)
1.67	0.06	9230879.00	2634866.25	100.00	440

Ret. Time: 1.67 <<<< POSITIVE SPECTRA >>>>



*** End of Report ***