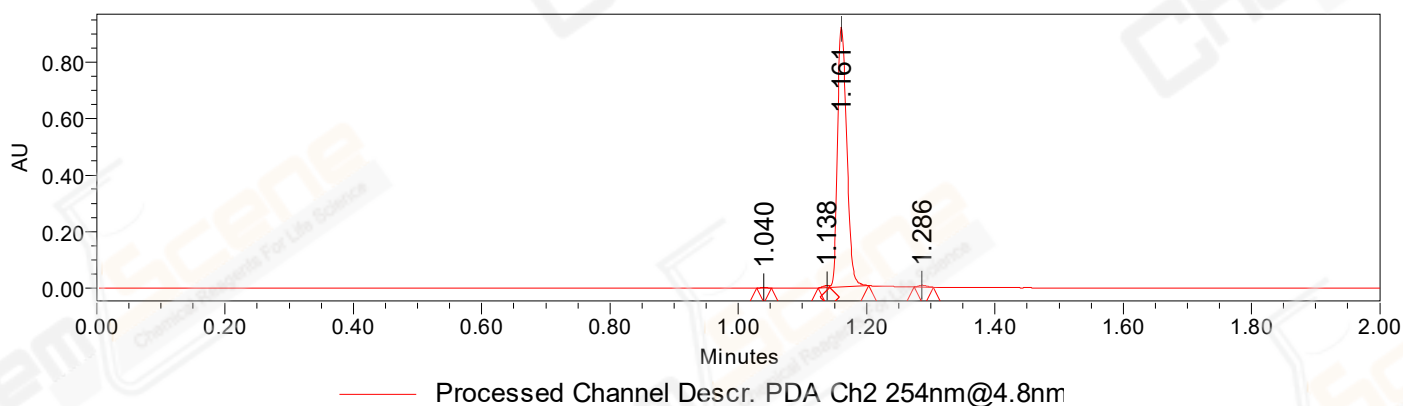


SAMPLE INFORMATION

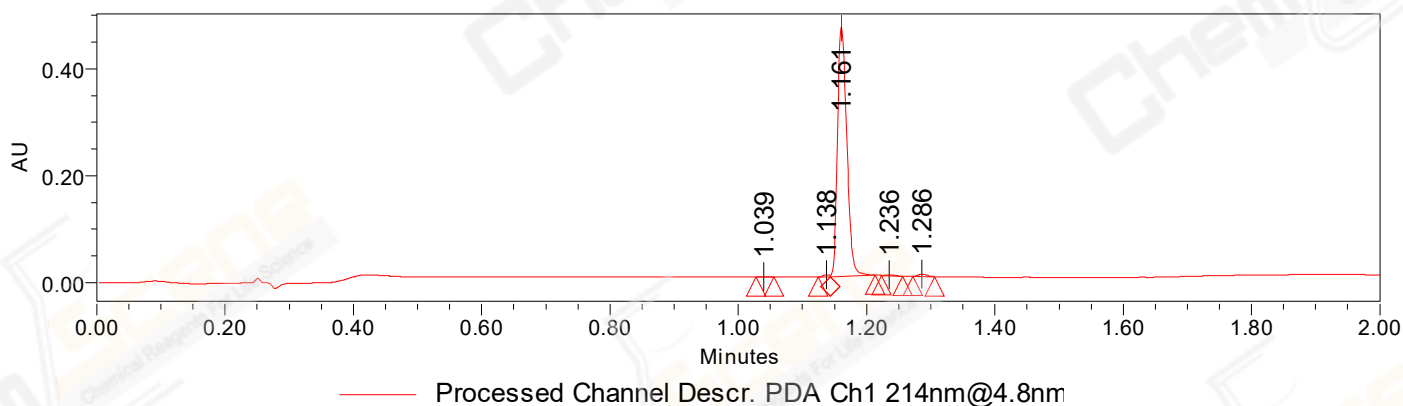
CAS NO.: 1450644-28-6
Sample information:
Vial: 1:C,5
Injection #: 1
Injection Volume: 0.50 ul
Run Time: 2.8 Minutes
Sample Set Name: 20220221

Acquired By: LY
Date Acquired: 2/21/2022 7:32:47 PM CST
Acq. Method Set: 1_POS_2MIN
Date Processed: 2/22/2022 9:18:46 AM CST,
Processing Method: PDA_01, MS_scan
Channel Name: PDA Ch1 214nm@4.8nm, MS TIC,
Column Name:

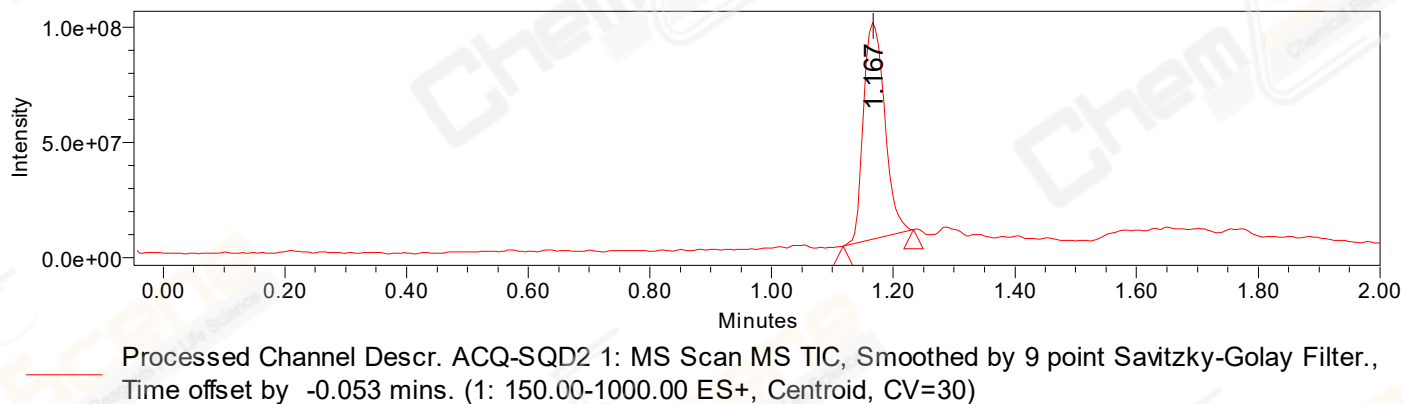
Auto-Scaled Chromatogram



Auto-Scaled Chromatogram



Auto-Scaled Chromatogram



Peak Results
Channel Name: PDA Ch2 254nm@4.8nm

	RT	Width (sec)	Area	Height	% Area	Base Peak (Combined) (m/z)	Channel Name
1	1.040	1.350	911	1179	0.10	213.03	PDA Ch2 254nm@4.8nm
2	1.138	1.100	4182	6278	0.45	152.09	PDA Ch2 254nm@4.8nm
3	1.161	3.650	928283	921713	98.81	152.12	PDA Ch2 254nm@4.8nm
4	1.286	1.800	6103	6595	0.65	151.96	PDA Ch2 254nm@4.8nm

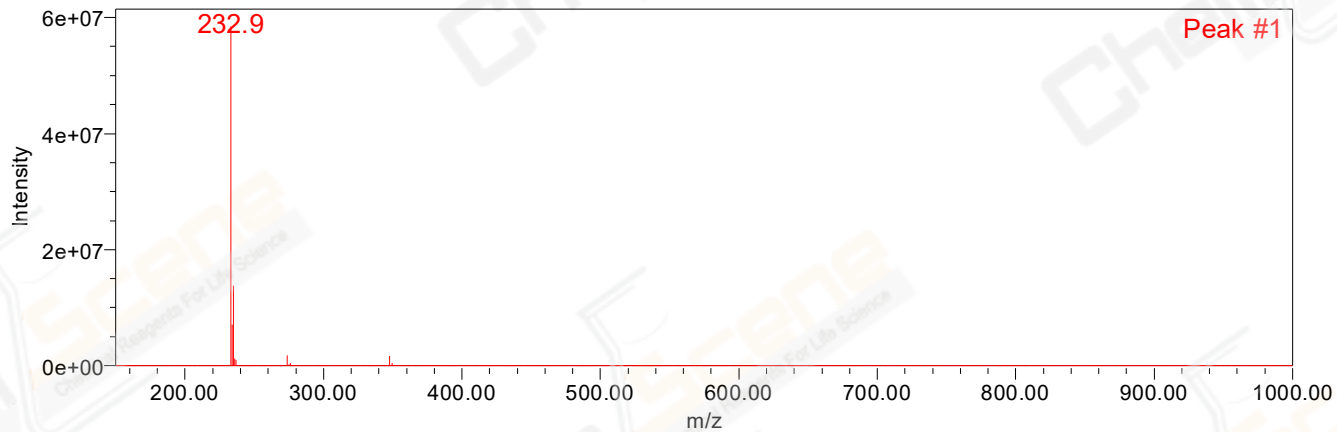
Peak Results
Channel Name: PDA Ch1 214nm@4.8nm

	RT	Width (sec)	Area	Height	% Area	Base Peak (Combined) (m/z)	Channel Name
1	1.039	1.700	764	860	0.16	152.94	PDA Ch1 214nm@4.8nm
2	1.138	1.150	2714	3802	0.56	152.10	PDA Ch1 214nm@4.8nm
3	1.161	4.200	473039	466094	98.17	152.13	PDA Ch1 214nm@4.8nm
4	1.236	1.950	1376	1474	0.29	415.20	PDA Ch1 214nm@4.8nm
5	1.286	2.050	3959	4172	0.82	151.97	PDA Ch1 214nm@4.8nm

Peak Results
Channel Name: MS TIC

	RT	Width (sec)	Area	Height	% Area	Base Peak (Combined) (m/z)	Channel Name
1	1.167	6.964	228906469	94105012	100.00	232.86	MS TIC

Match Plot



Retention Time 1.167 Channel Name MS TIC