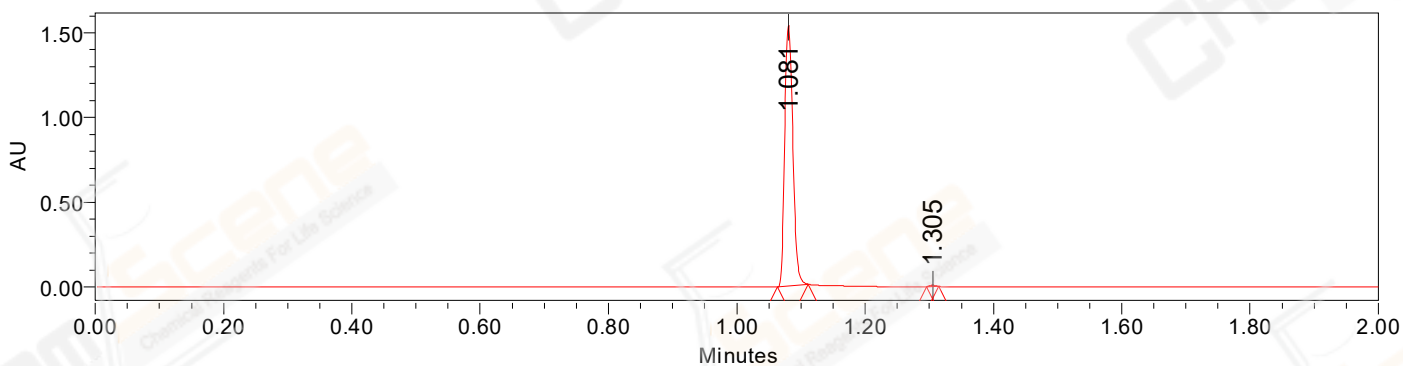


## SAMPLE INFORMATION

CAS NO.: 1445790-55-5  
Sample information: 1:D,8  
Vial: 1  
Injection #: 1  
Injection Volume: 0.50 ul  
Run Time: 2.8 Minutes  
Sample Set Name: 20220301

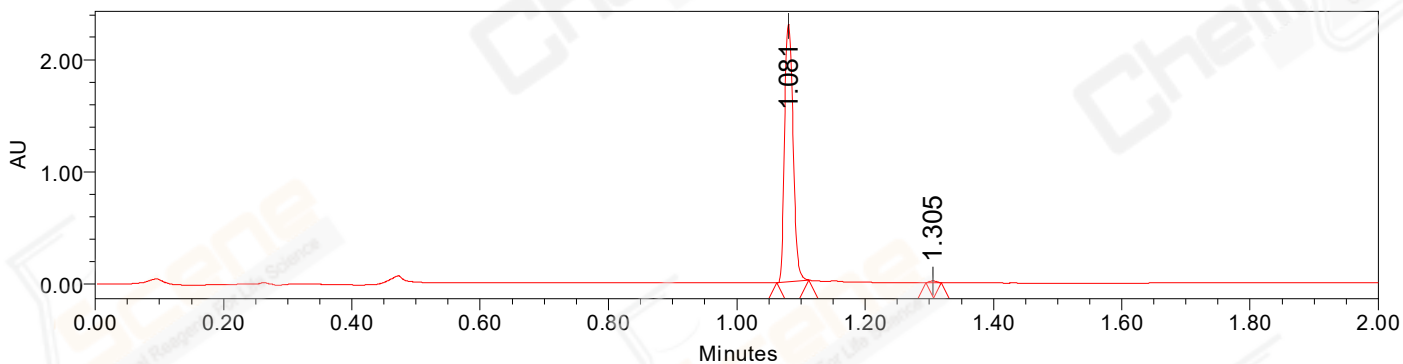
Acquired By: LY  
Date Acquired: 3/1/2022 2:44:27 PM CST  
Acq. Method Set: 1\_POS\_2MIN  
Date Processed: 3/1/2022 4:30:11 PM CST,  
Processing Method: PDA\_01, MS\_scan  
Channel Name: PDA Ch1 214nm@4.8nm, MS TIC,  
Column Name:

### Auto-Scaled Chromatogram



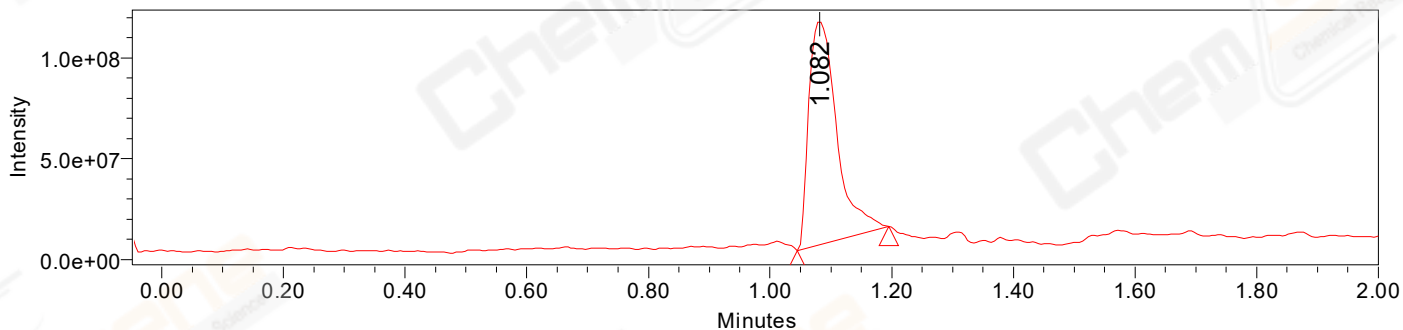
Processed Channel Descr. PDA Ch2 254nm@4.8nm

### Auto-Scaled Chromatogram



Processed Channel Descr. PDA Ch1 214nm@4.8nm

### Auto-Scaled Chromatogram



Processed Channel Descr. ACQ-SQD2 1: MS Scan MS TIC, Smoothed by 9 point Savitzky-Golay Filter., Time offset by -0.053 mins. (1: 150.00-1000.00 ES+, Centroid, CV=30)

Peak Results  
Channel Name: PDA Ch2 254nm@4.8nm

	RT	Width (sec)	Area	Height	% Area	Base Peak (Combined) (m/z)	Channel Name
1	1.081	2.900	1344112	1535952	99.67	228.21	PDA Ch2 254nm@4.8nm
2	1.305	1.150	4391	6540	0.33	763.92	PDA Ch2 254nm@4.8nm

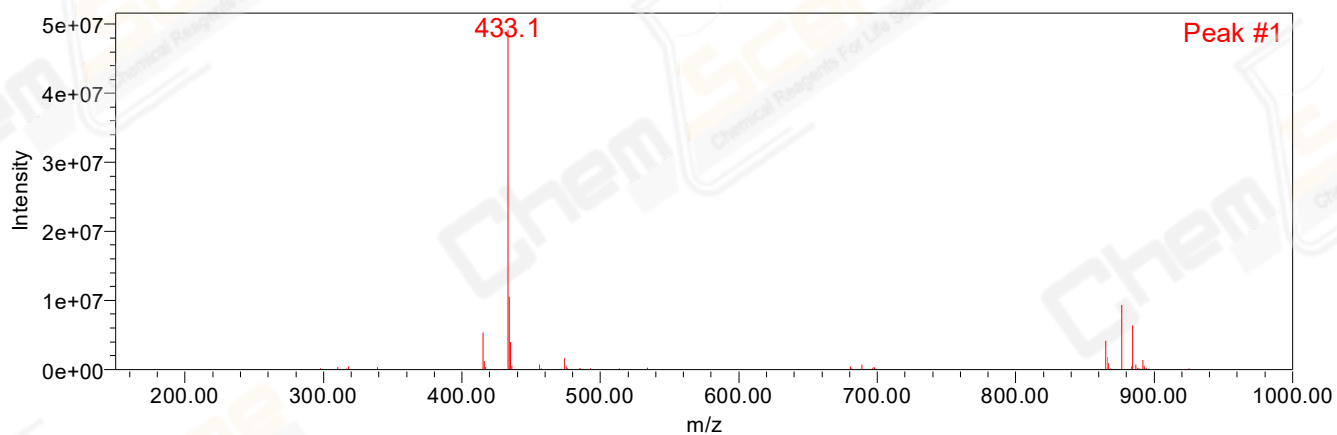
Peak Results  
Channel Name: PDA Ch1 214nm@4.8nm

	RT	Width (sec)	Area	Height	% Area	Base Peak (Combined) (m/z)	Channel Name
1	1.081	3.000	2105642	2299427	99.47	228.21	PDA Ch1 214nm@4.8nm
2	1.305	1.400	11279	14840	0.53	763.91	PDA Ch1 214nm@4.8nm

Peak Results  
Channel Name: MS TIC

	RT	Width (sec)	Area	Height	% Area	Base Peak (Combined) (m/z)	Channel Name
1	1.082	8.994	355178371	111443997	100.00	433.07	MS TIC

Match Plot



Retention Time 1.082 Channel Name MS TIC