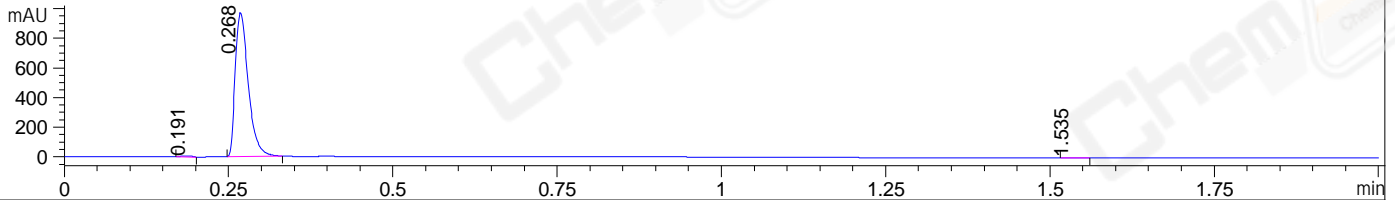
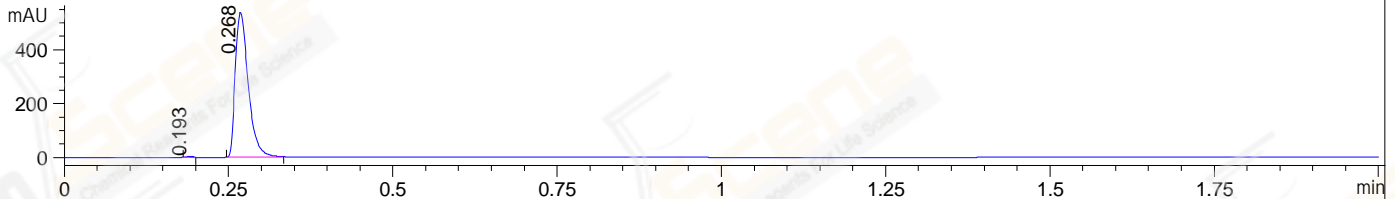


File ..01\BIZ2022-228-SCH27-UPLC-MS-01-000001588.D Tgt Mass (EZX):
 Injection Date : 1 Mar 22 5:48 pm +0800 Seq. Line : 0
 Sample Name : BIZ2022-228-SCH27 Location : P2-B-07
 Acq. Operator : LY_2278 Inj : 1
 Spec. Reported : MS Integration Inj Volume : 0.5 ul
 Acq. Method : D:\LCMS\Methods\1-POS-UPLC2.0MIN(0.8ML)-(150-1000).M
 Analysis Method : D:\LCMS\METHODS\1-POS-UPLC2.0MIN(0.8ML)-(150-1000).M
 CAS NO. : 13441-51-5 Walkup method: '1-POS-2MIN' Target:
 Method Info : Mobile Phase: A: water(0.01%TFA) B:ACN(0.01%TFA)
 Gradient: 5% to 95%B within 0.6 min
 Flow Rate : 0.8ml/min
 Column :Poroshell 120 EC- C18, 2.1*50mm,1.9um
 Oven Temperature : 45C

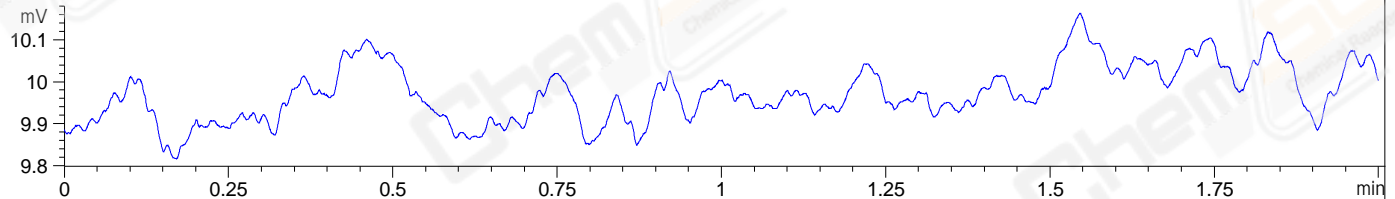
DAD1 A, Sig=214,4 Ref=off



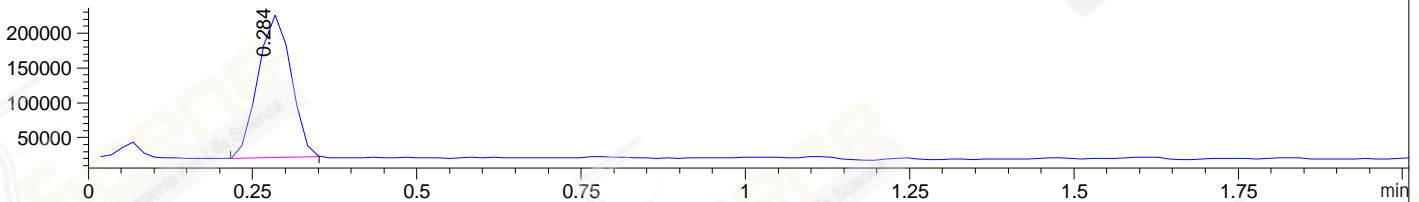
DAD1 B, Sig=254,4 Ref=off



ELS1 A, ELSD Signal



MSD1 TIC, MS File ES-API, Pos, Scan, Frag: 70



Integration Results for DAD1 A, Sig=214,4 Ref=off

RetTim	Width	Area	Height	Area%	MS (+)
0.19	0.02	6.89	6.35	0.51	161
0.27	0.02	1337.77	972.27	99.36	209
1.53	0.02	1.76	1.67	0.13	317

Integration Results for DAD1 B, Sig=254,4 Ref=off

RetTim	Width	Area	Height	Area%	MS (+)
0.19	0.01	3.20	4.96	0.43	161
0.27	0.02	739.73	538.82	99.57	209

Integration Results for ELS1 A, ELSD Signal

RetTim	Width	Area	Height	Area%	MS (+)
--------	-------	------	--------	-------	--------

Integration Results for MSD1 TIC, MS File

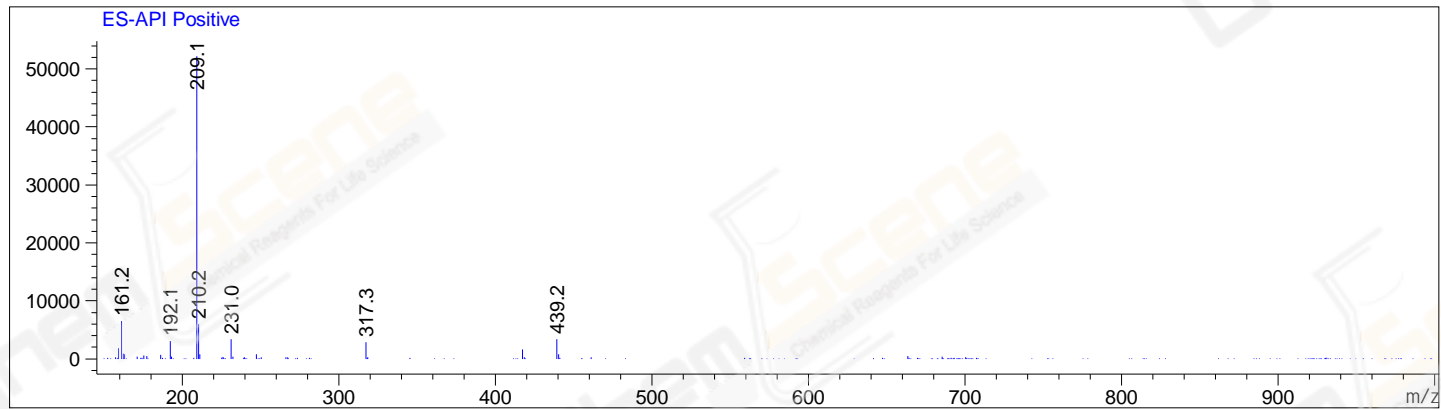
0.28 0.06 712142.31 208435.34 100.00 209



RetTim	Width	Area	Height	Area%	MS(+)
0.28	0.06	712142.31	208435.34	100.00	209

Ret. Time: 0.28

<<<< POSITIVE SPECTRA >>>>



*** End of Report ***