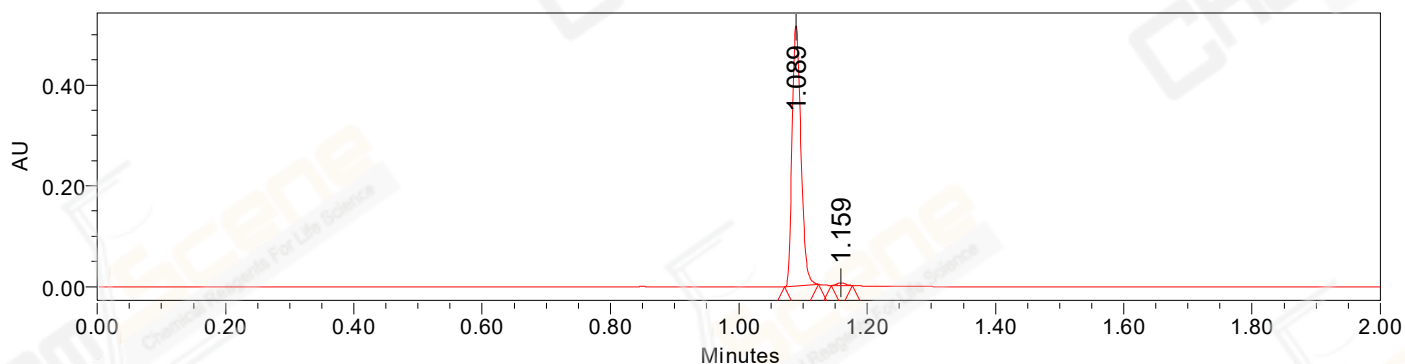


SAMPLE INFORMATION

CAS NO.: 1185329-96-7
Sample information:
Vial: 1:C,5
Injection #: 1
Injection Volume: 0.50 ul
Run Time: 2.8 Minutes
Sample Set Name: 20220303_4

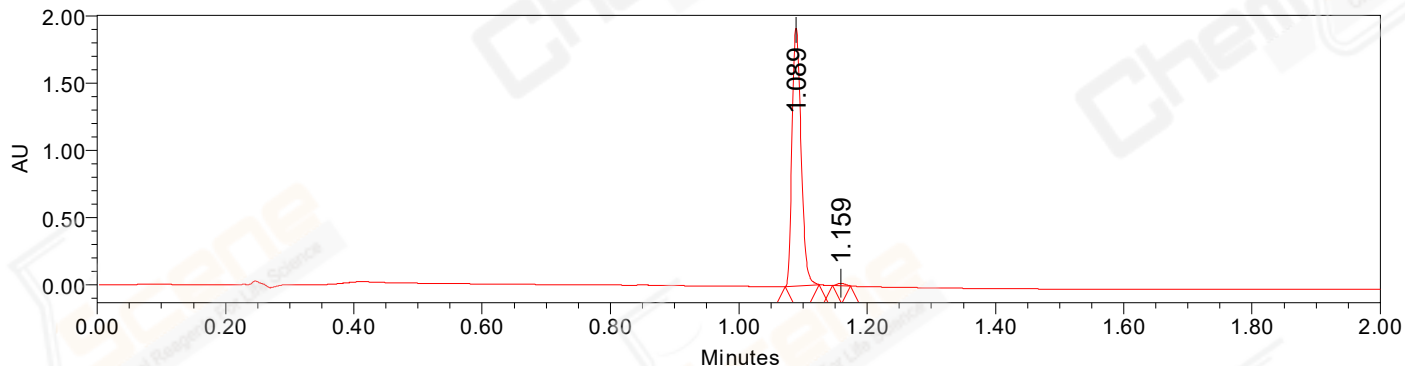
Acquired By: LY
Date Acquired: 3/3/2022 8:26:22 PM CST
Acq. Method Set: 1_POS_2MIN
Date Processed: 3/4/2022 10:04:32 AM CST,
Processing Method: PDA_01, MS_scan
Channel Name: PDA Ch1 214nm@4.8nm, MS TIC,
Column Name:

Auto-Scaled Chromatogram



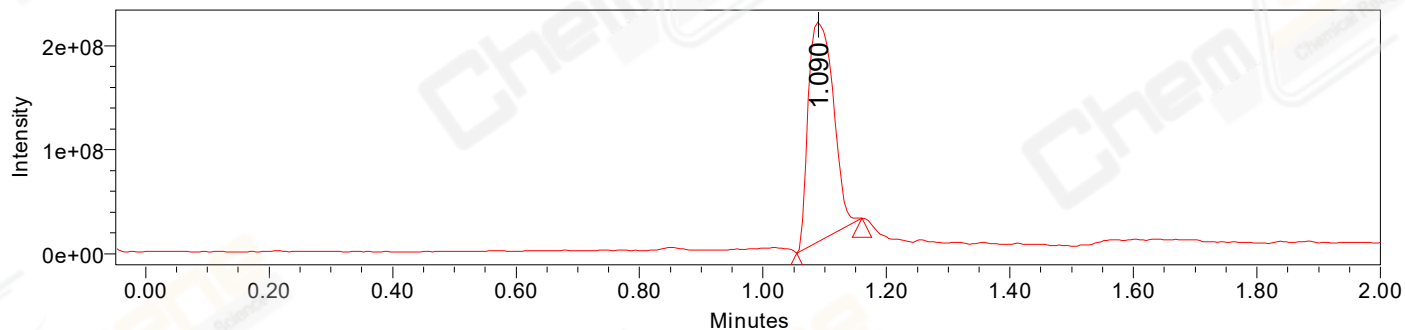
Processed Channel Descr. PDA Ch2 254nm@4.8nm

Auto-Scaled Chromatogram



Processed Channel Descr. PDA Ch1 214nm@4.8nm

Auto-Scaled Chromatogram



Processed Channel Descr. ACQ-SQD2 1: MS Scan MS TIC, Smoothed by 9 point Savitzky-Golay Filter., Time offset by -0.053 mins. (1: 150.00-1000.00 ES+, Centroid, CV=30)

Peak Results
Channel Name: PDA Ch2 254nm@4.8nm

	RT	Width (sec)	Area	Height	% Area	Base Peak (Combined) (m/z)	Channel Name
1	1.089	3.150	493372	515310	99.05	152.00	PDA Ch2 254nm@4.8nm
2	1.159	1.950	4734	5071	0.95	437.17	PDA Ch2 254nm@4.8nm

Peak Results
Channel Name: PDA Ch1 214nm@4.8nm

	RT	Width (sec)	Area	Height	% Area	Base Peak (Combined) (m/z)	Channel Name
1	1.089	3.150	1873625	1917939	99.16	152.00	PDA Ch1 214nm@4.8nm
2	1.159	1.700	15780	17881	0.84	437.17	PDA Ch1 214nm@4.8nm

Peak Results
Channel Name: MS TIC

	RT	Width (sec)	Area	Height	% Area	Base Peak (Combined) (m/z)	Channel Name
1	1.090	6.384	594072096	212217225	100.00	437.17	MS TIC

Match Plot

