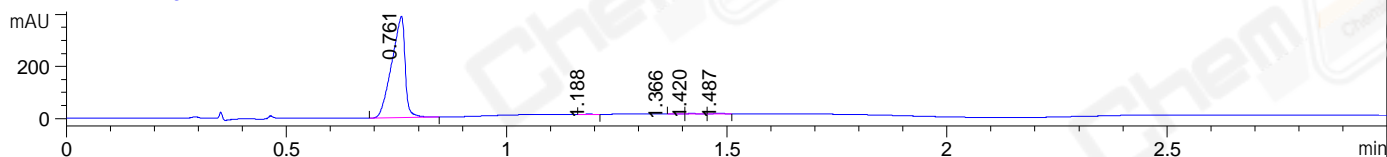
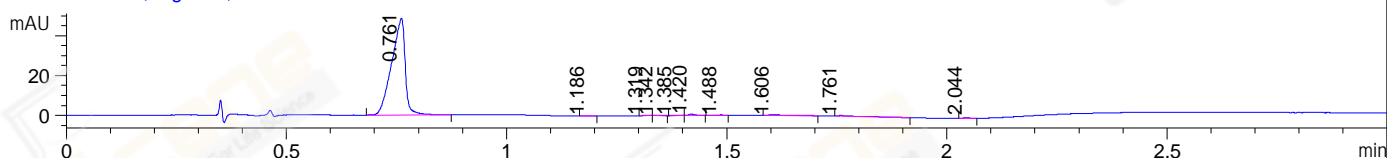


File ..3\Data\20190123\20190123\LJ2019-0123-0007.D Tgt Mass (CHM):  
 Injection Date : 23 Jan 19 6:22 pm +0800 Seq. Line : 113  
 Sample Name : LJ2019-0123-0007 Location : P1-F-05  
 Acq. Operator : SYSTEM Inj : 1  
 Spec. Reported : MS Integration Inj Volume : 1 ul  
 Acq. Method : D:\LCMS03\Data\20190123\20190123\1-POS-3MIN.M  
 Analysis Method : D:\LCMS03\Data\20190123\20190123\1-POS-3MIN.M  
 CAS NO. : 59864-31-2  
 Method Info : Mobile Phase: A: water(0.01%TFA) B:ACN(0.01%TFA)  
 Gradient: 5% to 95%B within 1.3 min  
 Flow Rate :1.8ml/min  
 Column :SunFire C18, 4.6\*50mm,3.5um A-RP-392  
 Oven Temperature : 45C

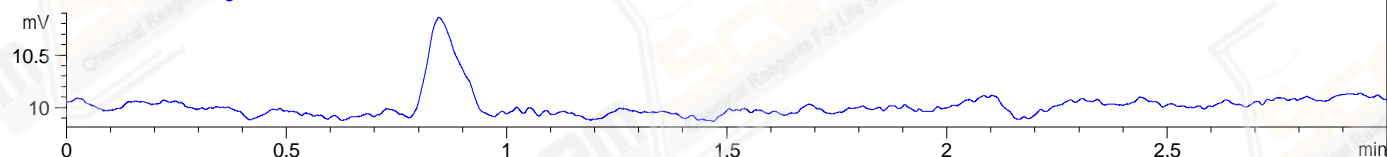
DAD1 A, Sig=214,4 Ref=off



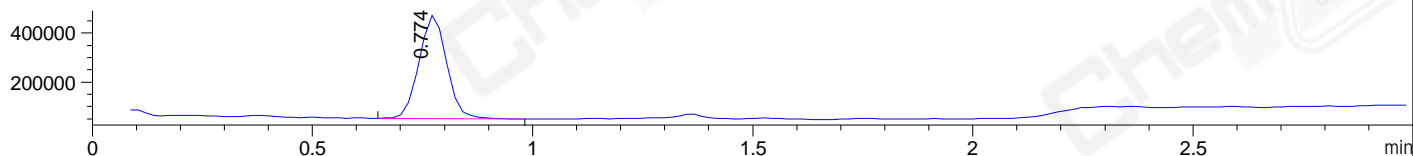
DAD1 B, Sig=254,4 Ref=off



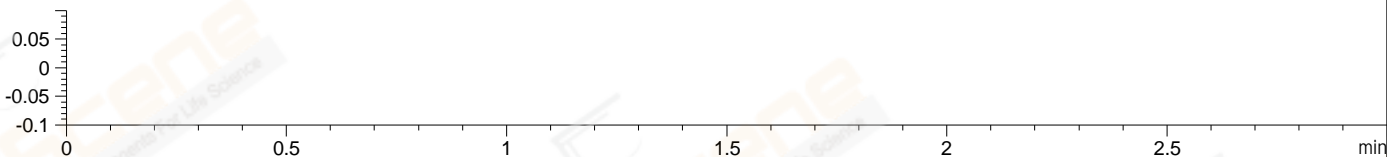
ELS1 A, ELSD Signal



MSD1 TIC, MS File ES-API, Pos, Scan, Frag: 70



Ion 1, MSD1 1, Target Mass 0 +H Positive, EIC=0.7:1.7



Integration Results for DAD1 A, Sig=214,4 Ref=off

RetTim	Width	Area	Height	Area%	MS (+)
0.76	0.03	826.05	389.72	99.16	154
1.19	0.02	1.39	0.99	0.17	114
1.37	0.02	1.36	0.11	0.16	114
1.42	0.02	2.18	1.69	0.26	114
1.49	0.03	2.06	1.10	0.25	114

Integration Results for DAD1 B, Sig=254,4 Ref=off

RetTim	Width	Area	Height	Area%	MS (+)
0.76	0.03	103.74	48.50	96.68	154
1.19	0.02	0.14	0.13	0.13	114
1.32	0.02	0.22	0.22	0.20	114
1.34	0.01	0.16	0.19	0.15	114
1.38	0.01	0.20	0.22	0.19	114
1.42	0.02	0.64	0.61	0.60	114
1.49	0.02	0.23	0.15	0.22	114
1.61	0.03	0.94	0.39	0.87	114
1.76	0.04	0.71	0.21	0.66	114

2.04 0.02 0.32 0.30 0.29 114

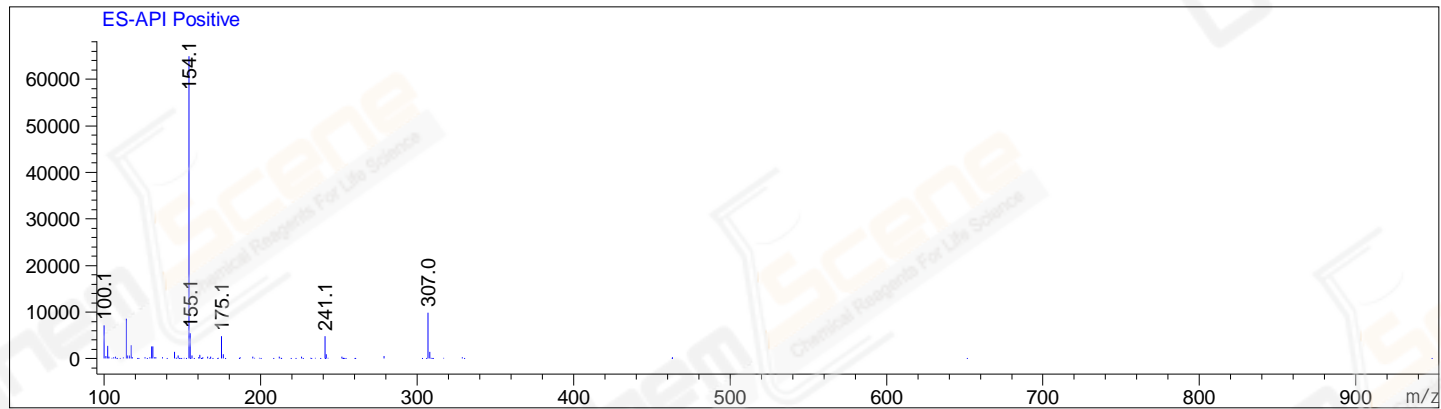
## Integration Results for ELS1 A, ELSD Signal

RetTim	Width	Area	Height	Area%	MS(+)
--------	-------	------	--------	-------	-------

## Integration Results for MSD1 TIC, MS File

RetTim	Width	Area	Height	Area%	MS(+)
0.77	0.07	1854196.38	422997.63	100.00	154

Ret. Time: 0.77 <<<< POSITIVE SPECTRA >>>>



\*\*\* End of Report \*\*\*