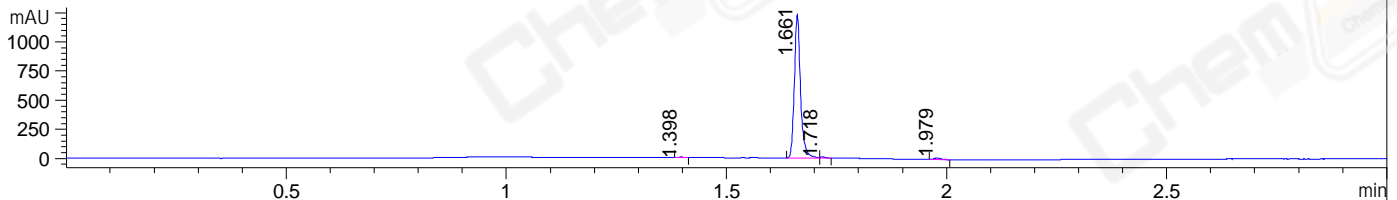
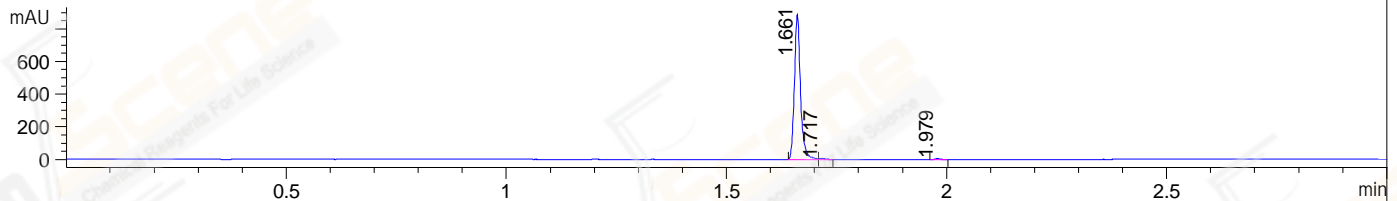


File ..\DATA\2020\20200514\959\CPK2020-513-14628.D Tgt Mass (CHM):  
 Injection Date : 14 May 20 2:20 pm +0800 Seq. Line : 61  
 Sample Name : CPK2020-513-14628 Location : P1-B-04  
 Acq. Operator : ZJ\_1432 Inj : 1  
 Spec. Reported : MS Integration Inj Volume : 1 ul  
 Acq. Method : D:\Chem32\1\data\2020\20200514\959\1-POS-3MIN.M  
 Analysis Method : D:\CHEM32\1\DATA\2020\20200514\959\1-POS-3MIN.M  
 Catalog No : CS-3094  
 Method Info : Mobile Phase: A: water(0.01%TFA) B:ACN(0.01%TFA)  
 Gradient: 5% to 95%B within 1.3 min  
 Flow Rate :1.8ml/min  
 Column :SunFire C18, 4.6\*50mm,3.5um A-RP-607  
 Oven Temperature : 45□

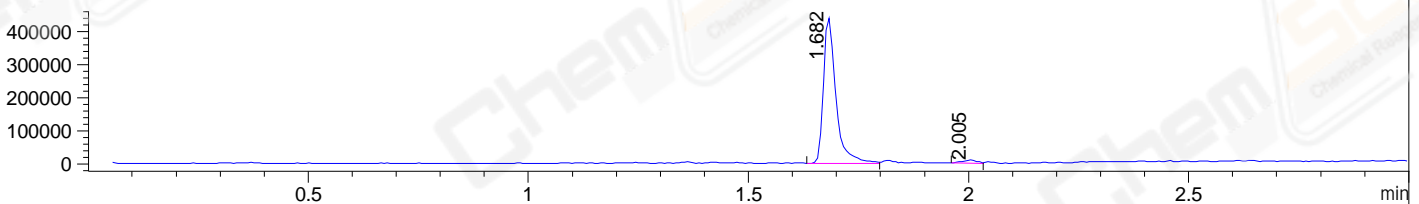
DAD1 B, Sig=214,4 Ref=off



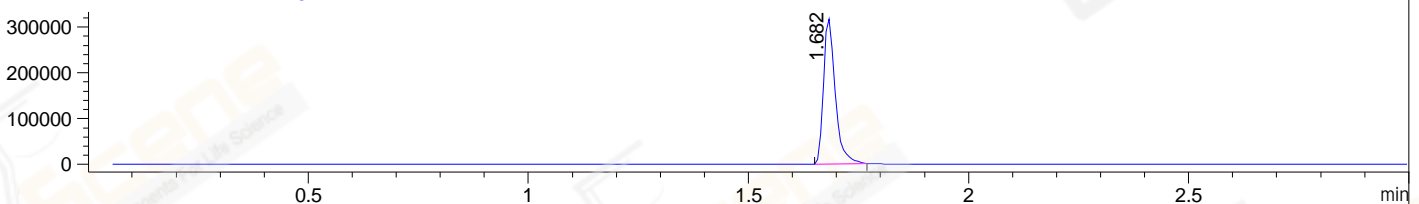
DAD1 C, Sig=254,4 Ref=off



MSD1 TIC, MS File ES-API, Pos, Scan, Frag: 70



Ion 444, MSD1 444, Target Mass 443 +H Positive, EIC=443.7:444.7



## Integration Results for DAD1 B, Sig=214,4 Ref=off

RetTim	Width	Area	Height	Area%	MS (+)
1.40	0.01	2.25	3.73	0.19	130
1.66	0.02	1194.83	1229.62	98.28	444
1.72	0.01	5.29	7.59	0.43	444
1.98	0.02	13.31	12.78	1.09	611

## Integration Results for DAD1 C, Sig=254,4 Ref=off

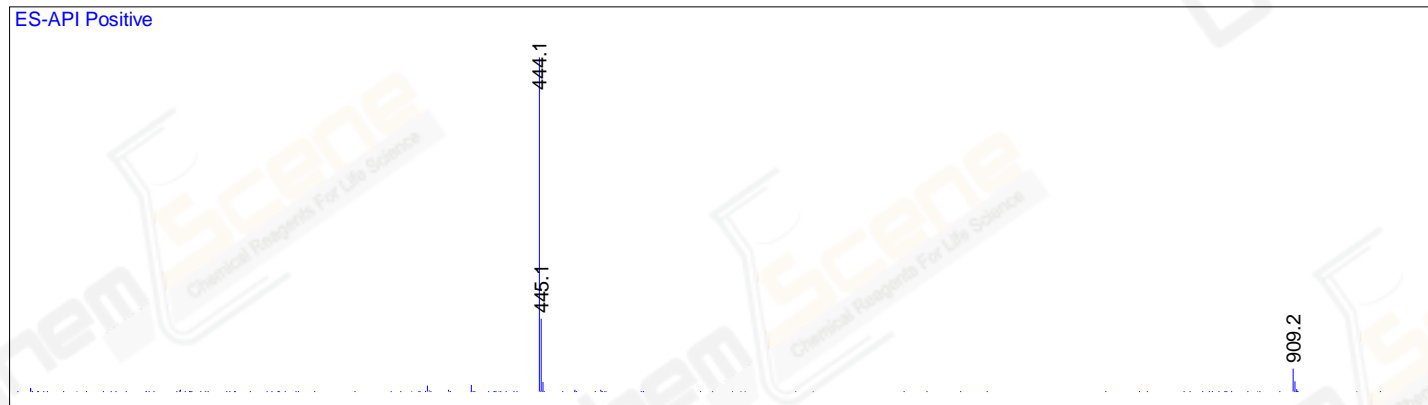
RetTim	Width	Area	Height	Area%	MS (+)
1.66	0.01	860.87	889.02	98.34	444
1.72	0.01	7.41	7.43	0.85	444
1.98	0.02	7.16	7.03	0.82	611

## Integration Results for MSD1 TIC, MS File

RetTim	Width	Area	Height	Area%	MS (+)
1.68	0.03	873759.25	441707.31	97.67	444
2.00	0.03	20863.36	10101.28	2.33	611

Ret. Time: 1.68

<<<< POSITIVE SPECTRA >>>>



Ret. Time: 2.00

