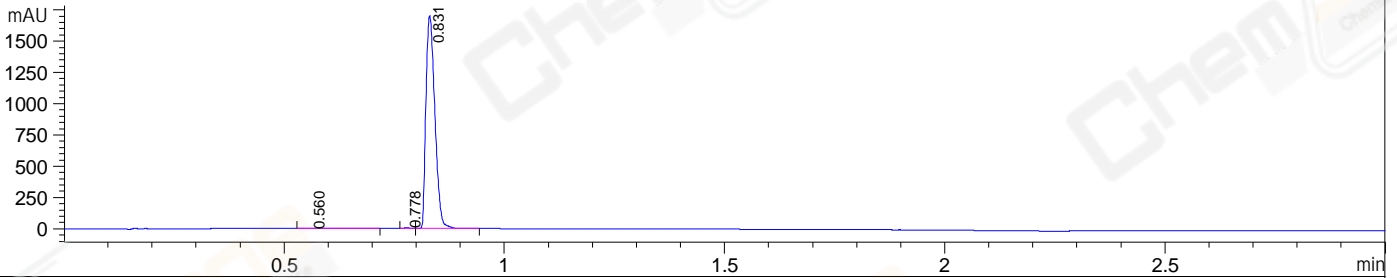
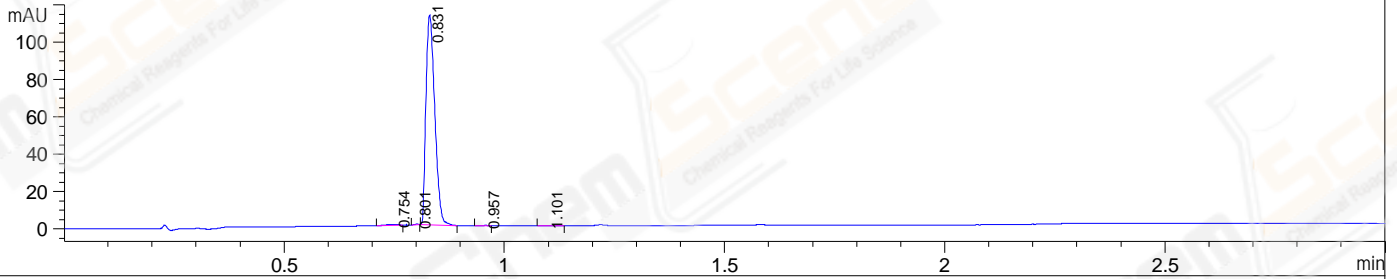


File E:\ChemStation\1\DATA\2023\2023-11\2023-11-10\CPK2023-N10-146969-UPLC-MS-10-019337.D  
 Injection Date : 10-Nov-23, 16:23:28 Tgt Mass(EZX) :  
 Sample Name : CPK2023-N10-146969 Location : P2-B-10  
 Acq. Operator : LY\_2278 Inj : 1  
 Spec. Reported : MS Integration Inj Volume : 0.8 ul  
 Acq. Method : E:\ChemStation\1\Methods\1-POS-UPLC3.0MIN(1.2)(150-2000).M  
 Analysis Method : E:\CHEMSTATION\1\METHODS\1-POS-UPLC3.0MIN(1.2)(150-2000).M  
 Product Name: BIM-23190 (hydrochloride) WalkUp method: '1-POS-3MIN-(150-2000)'  
 Project: CPK2023 Method Info : Mobile Phase: A: water(0.01%TFA) B:ACN(0.01%TFA)  
 Gradient: 5% to 95%B within 2.0 min  
 Flow Rate :1.2ml/min  
 Column :Shim-pack Scepter C18-120, 3.0\*33mm,3um  
 Oven Temperature : 45C

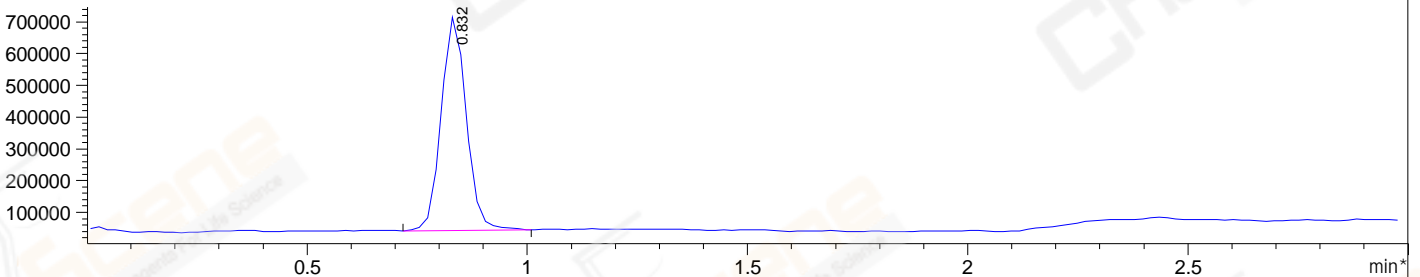
DAD1 A, Sig=214,4 Ref=off



DAD1 B, Sig=254,4 Ref=off



\*MSD1 TIC, MS File ES-API, Pos, Scan, Frag: 70



Integration Results for DAD1 A, Sig=214,4 Ref=off

RetTim	Width	Area	Height	Area%
0.56	0.05	4.15	1.26	0.17
0.78	0.01	4.64	5.80	0.19
0.83	0.02	2402.91	1696.38	99.64

Integration Results for DAD1 B, Sig=254,4 Ref=off

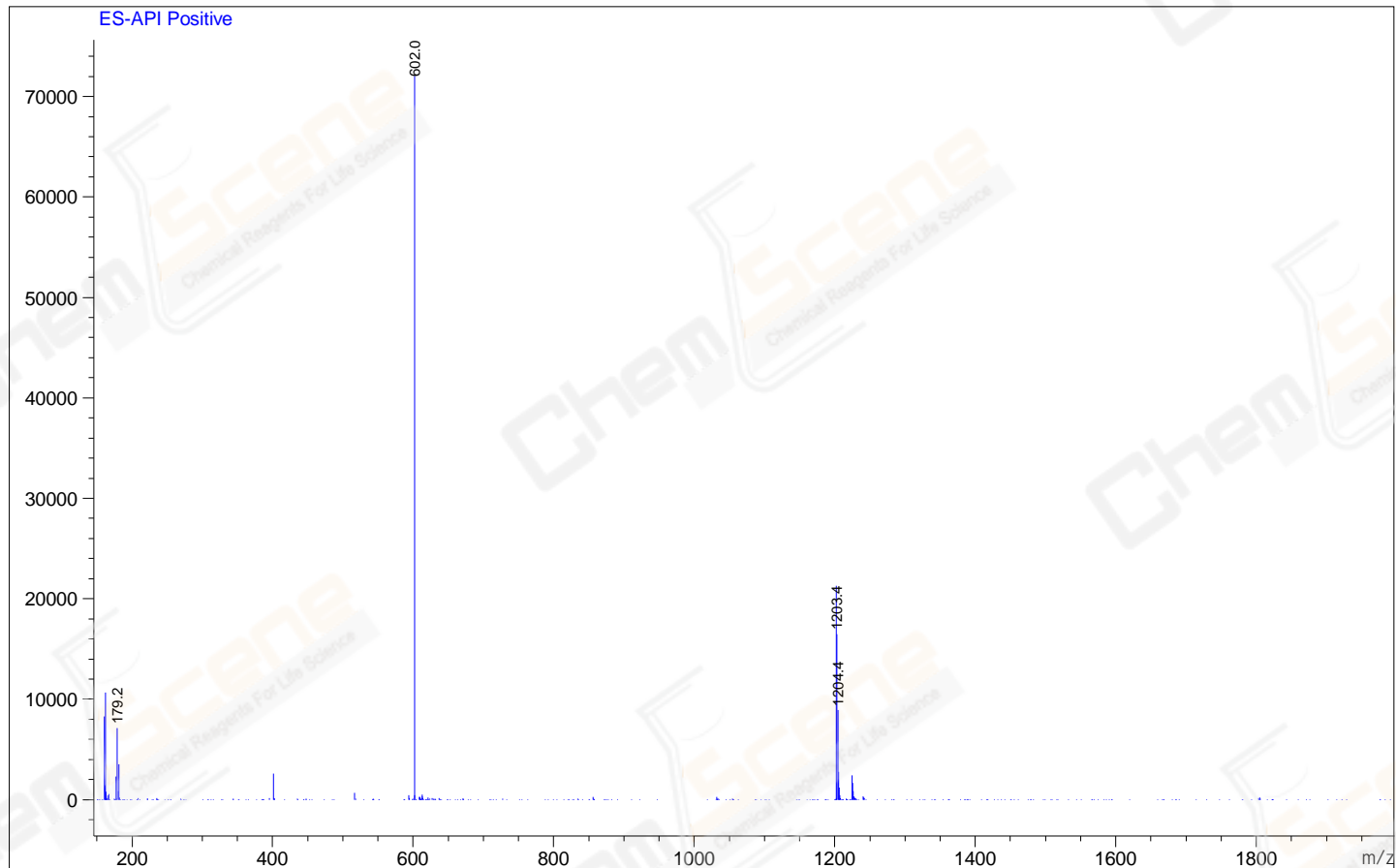
RetTim	Width	Area	Height	Area%
0.75	0.03	1.02	0.42	0.65
0.80	0.01	0.17	0.25	0.11
0.83	0.02	156.26	111.97	98.94
0.96	0.01	0.16	0.18	0.10
1.10	0.03	0.32	0.16	0.20

Integration Results for MSD1 TIC, MS File

RetTim	Width	Area	Height	Area%
0.83	0.06	2655513.75	673076.81	100.00

Ret. Time: 0.83

<<<< POSITIVE SPECTRA >>>>



\*\*\* End of Report \*\*\*