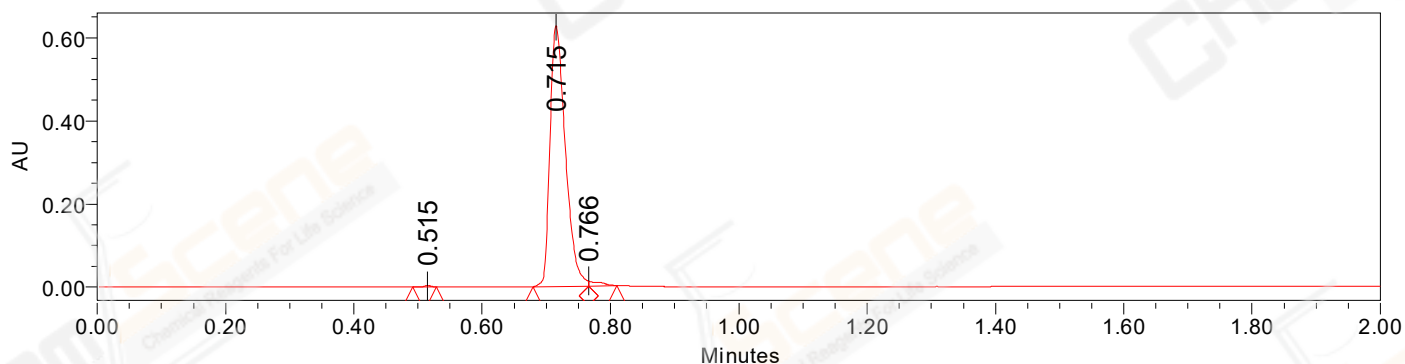


SAMPLE INFORMATION

CAS NO.: 1948273-03-7
Sample information: 1:B,8
Vial: 1
Injection #: 1
Injection Volume: 0.50 ul
Run Time: 2.8 Minutes
Sample Set Name: 20220324_2

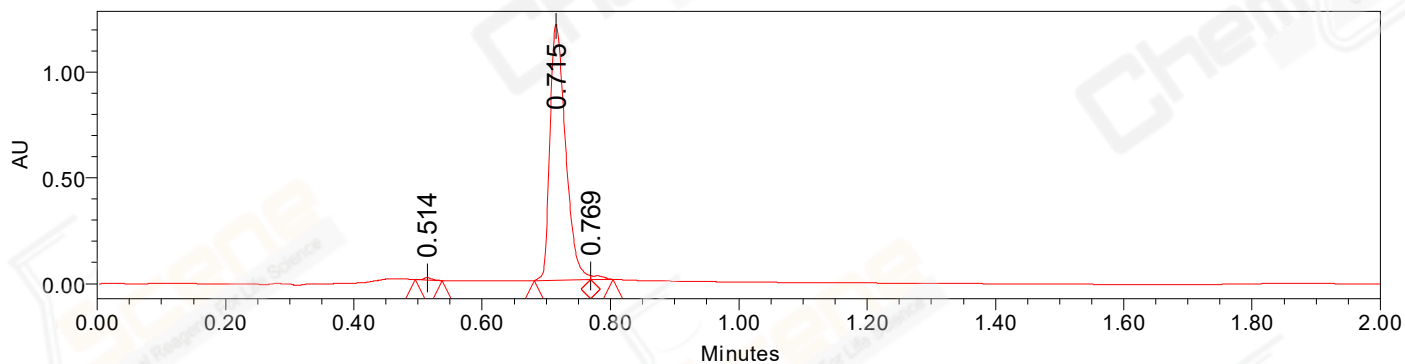
Acquired By: LY
Date Acquired: 3/24/2022 1:43:01 PM CST
Acq. Method Set: 1_POS_2MIN
Date Processed: 3/24/2022 8:13:01 PM CST,
Processing Method: PDA_01, PDA_02, MS_scan
Channel Name: PDA Ch1 214nm@4.8nm, MS TIC,
Column Name:

Auto-Scaled Chromatogram



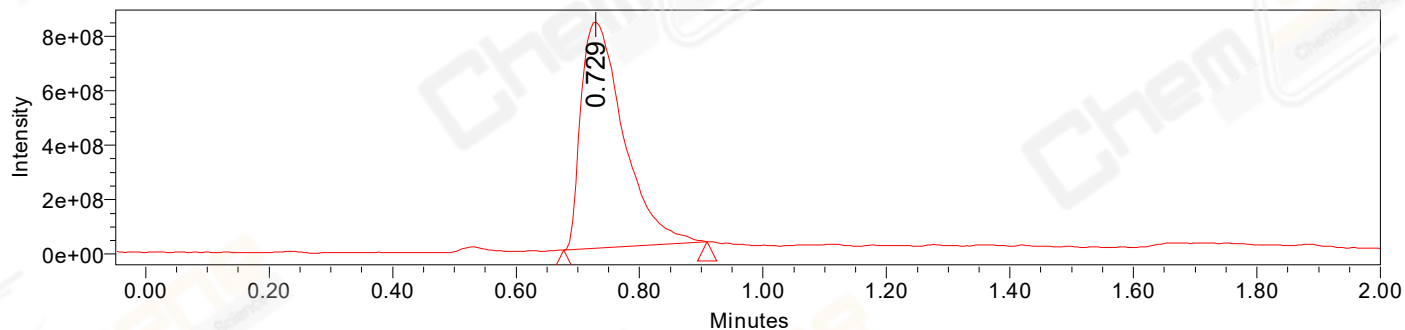
Processed Channel Descr. PDA Ch2 254nm@4.8nm

Auto-Scaled Chromatogram



Processed Channel Descr. PDA Ch1 214nm@4.8nm

Auto-Scaled Chromatogram



Processed Channel Descr. ACQ-SQD2 1: MS Scan MS TIC, Smoothed by 9 point Savitzky-Golay Filter., Time offset by -0.053 mins. (1: 150.00-1000.00 ES+, Centroid, CV=30)

Peak Results
Channel Name: PDA Ch2 254nm@4.8nm

	RT	Width (sec)	Area	Height	% Area	Base Peak (Combined) (m/z)	Channel Name
1	0.515	2.200	2603	3368	0.24	150.94	PDA Ch2 254nm@4.8nm
2	0.715	5.200	1047060	627231	98.35	151.99	PDA Ch2 254nm@4.8nm
3	0.766	2.650	14911	11858	1.40	445.29	PDA Ch2 254nm@4.8nm

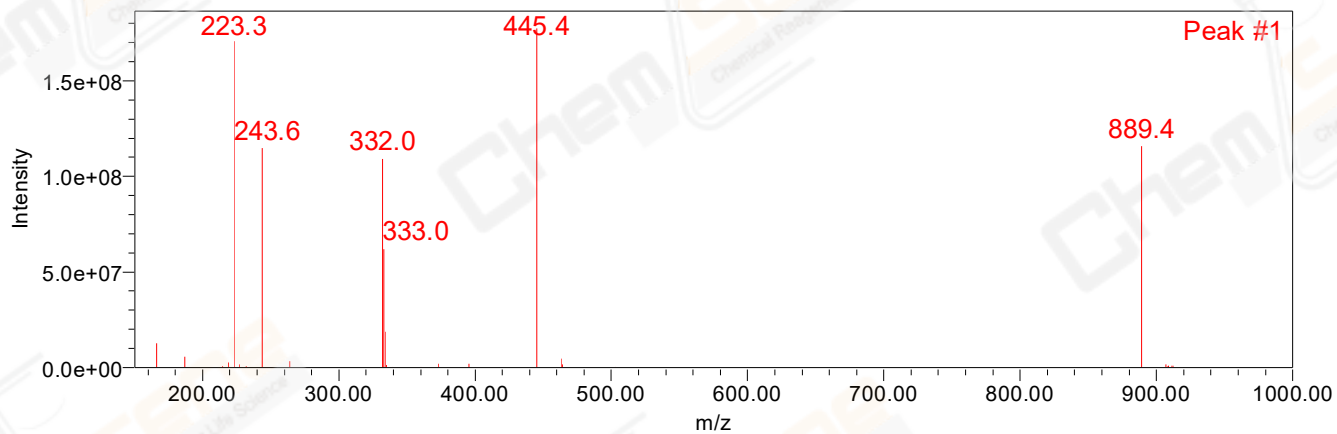
Peak Results
Channel Name: PDA Ch1 214nm@4.8nm

	RT	Width (sec)	Area	Height	% Area	Base Peak (Combined) (m/z)	Channel Name
1	0.514	2.500	9092	11247	0.44	150.99	PDA Ch1 214nm@4.8nm
2	0.715	5.300	2045589	1209830	98.38	151.97	PDA Ch1 214nm@4.8nm
3	0.769	2.100	24621	19326	1.18	445.33	PDA Ch1 214nm@4.8nm

Peak Results
Channel Name: MS TIC

	RT	Width (sec)	Area	Height	% Area	Base Peak (Combined) (m/z)	Channel Name
1	0.729	13.927	3977938352	831334148	100.00	223.18	MS TIC

Match Plot



Retention Time 0.729 Channel Name MS TIC