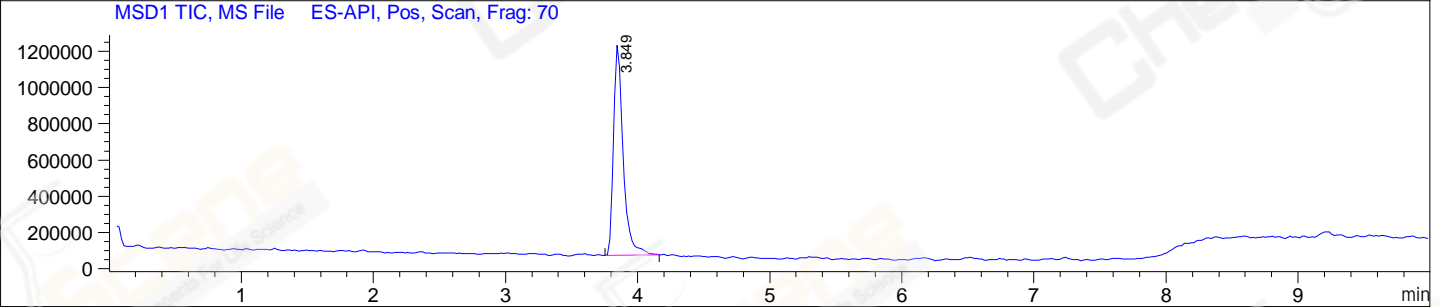
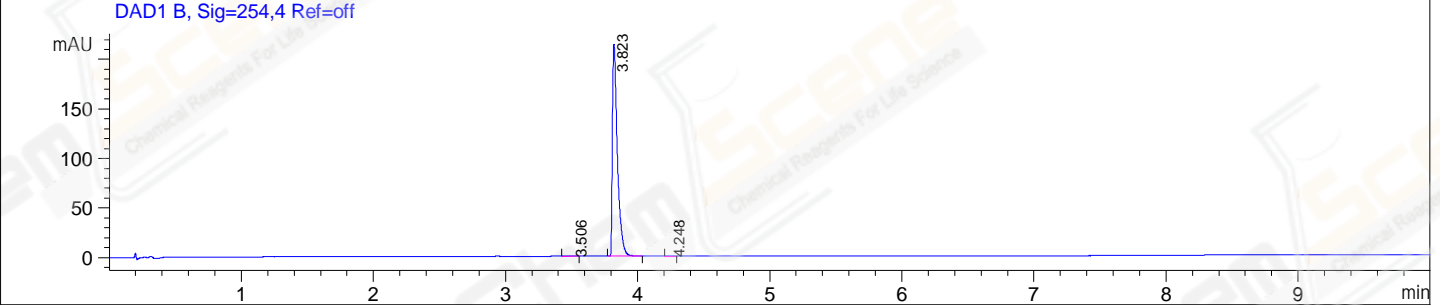
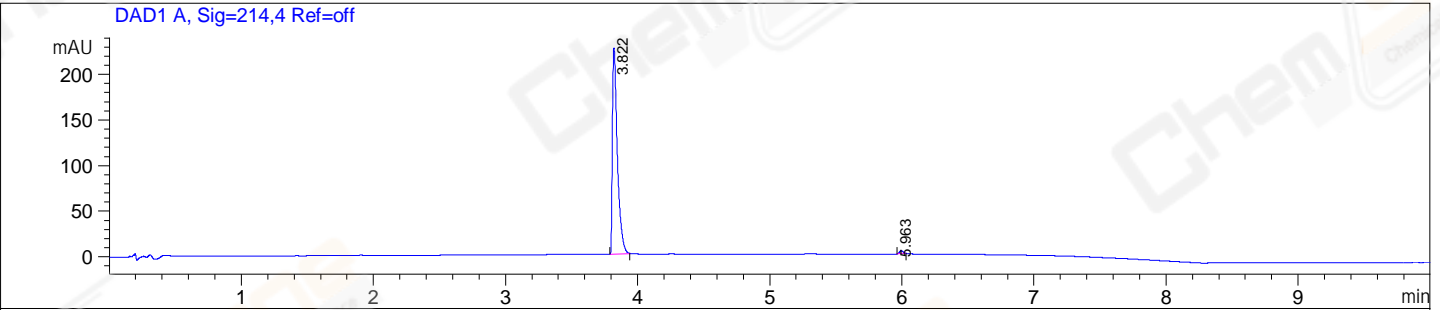


File F:\data\2023\2023-04\2023-04-18\CPK2023-414-UPLC-MS-05-004229.D
 Injection Date : 18-Apr-23, 19:40:14 Tgt Mass(EZX) :
 Sample Name : CPK2023-414 Location : P1-D-05
 Acq. Operator : LY_2278 Inj : 1
 Spec. Reported : MS Integration Inj Volume : 0.5 ul
 Acq. Method : D:\methods\1-POS-UPLC10.0MIN(0.8ML)-(150-2000).M
 Analysis Method : D:\METHODS\1-POS-UPLC10.0MIN(0.8ML)-(150-2000).M
 CAS NO. : 1133712-26-1 WalkUp method: '1-POS-10MIN' Project: CPK2023
 Method Info : Mobile Phase: A: water(0.01%TFA) B:ACN(0.01%TFA)
 Gradient:5% to 95%B within 8 min
 Flow Rate :0.8ml/min
 Column :Poroshell 120 EC- C18, 2.1*50mm,1.9um
 Oven Temperature : 45C



Integration Results for DAD1 A, Sig=214,4 Ref=off

RetTim	Width	Area	Height	Area%
3.82	0.04	588.05	238.36	99.04
5.96	0.03	5.71	-0.07	0.96

Integration Results for DAD1 B, Sig=254,4 Ref=off

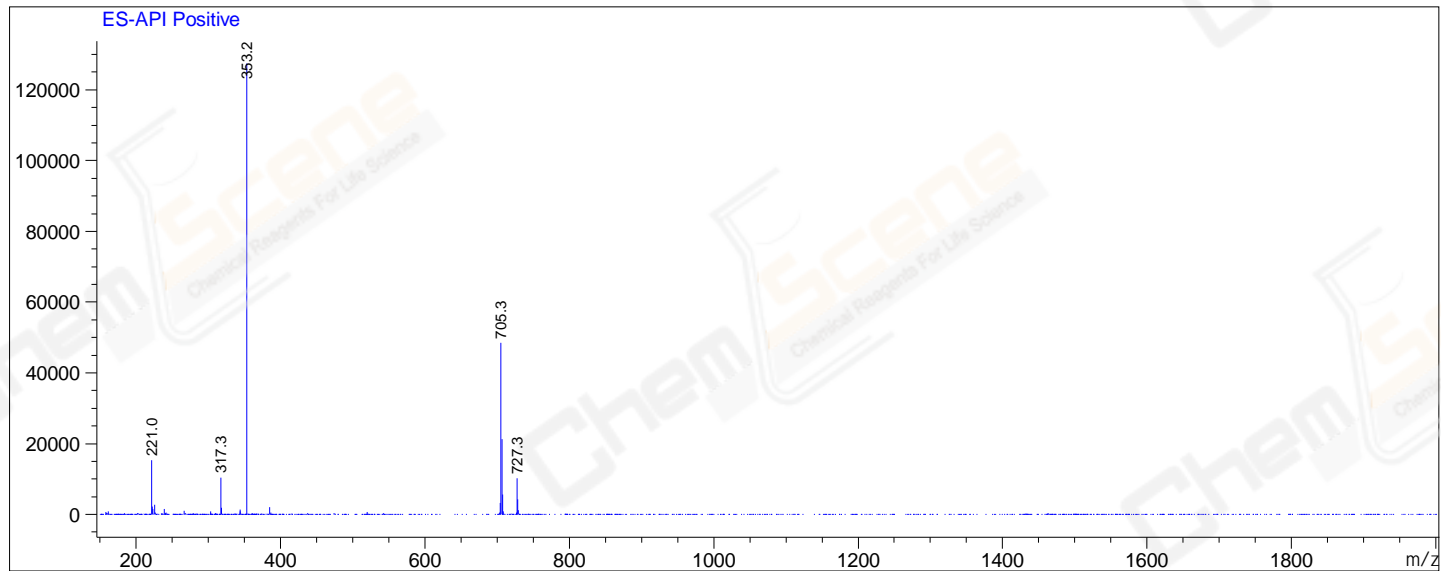
RetTim	Width	Area	Height	Area%
3.51	0.06	1.27	0.36	0.23
3.82	0.04	558.25	207.22	99.57
4.25	0.05	1.11	0.35	0.20

Integration Results for MSD1 TIC, MS File

RetTim	Width	Area	Height	Area%
3.85	0.08	6010776.00	1164706.13	100.00

Ret. Time: 3.85

<<<< POSITIVE SPECTRA >>>>



*** End of Report ***