

SAMPLE INFORMATION

CAS NO.: 2052301-24-1

Vial: 2:F,2

Injection #: 1

Injection Volume: 0.50 ul

Run Time: 2.8 Minutes

Sample Set Name: 20220326

Acquired By: LY

Date Acquired: 3/26/2022 5:34:19 PM CST

Acq. Method Set: 1_POS_2MIN

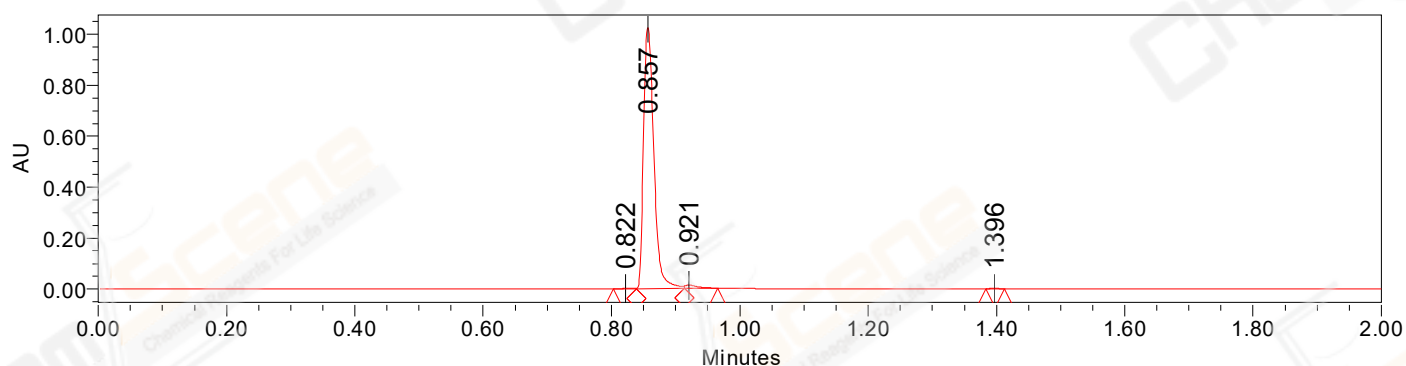
Date Processed: 3/26/2022 7:06:06 PM CST,

Processing Method: PDA_01, PDA_02, MS_scan

Channel Name: PDA Ch1 214nm@4.8nm, MS TIC,

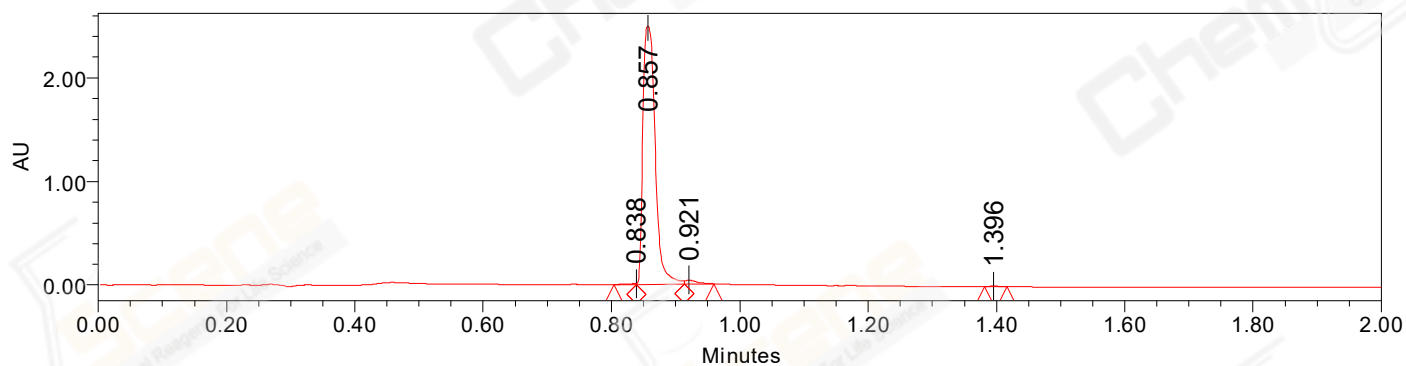
Column Name:

Auto-Scaled Chromatogram



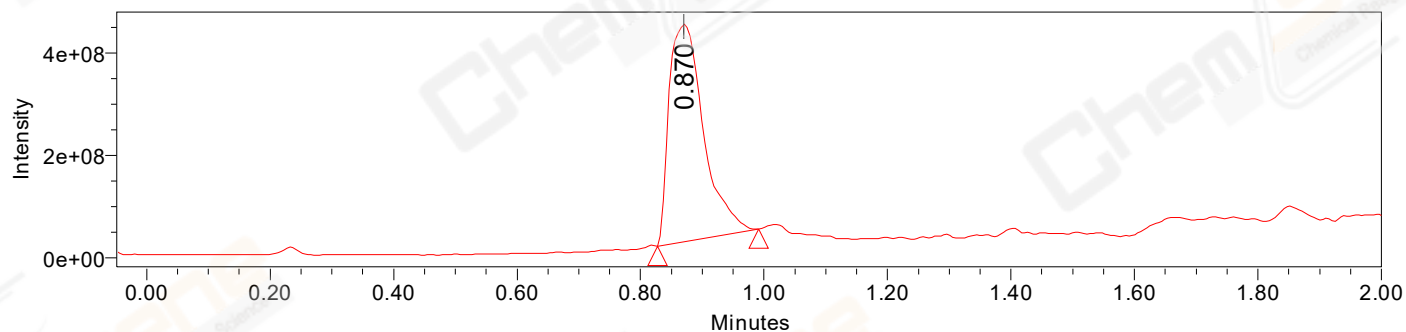
Processed Channel Descr. PDA Ch2 254nm@4.8nm

Auto-Scaled Chromatogram



Processed Channel Descr. PDA Ch1 214nm@4.8nm

Auto-Scaled Chromatogram



Processed Channel Descr. ACQ-SQD2 1: MS Scan MS TIC, Smoothed by 9 point Savitzky-Golay Filter., Time offset by -0.053 mins. (1: 150.00-1000.00 ES+, Centroid, CV=30)

Peak Results
Channel Name: PDA Ch2 254nm@4.8nm

	RT	Width (sec)	Area	Height	% Area	Base Peak (Combined) (m/z)	Channel Name
1	0.822	2.150	3084	2201	0.26	151.02	PDA Ch2 254nm@4.8nm
2	0.857	4.500	1146392	1023740	98.10	270.96	PDA Ch2 254nm@4.8nm
3	0.921	3.150	17548	12809	1.50	545.23	PDA Ch2 254nm@4.8nm
4	1.396	1.750	1556	1573	0.13	151.96	PDA Ch2 254nm@4.8nm

Peak Results
Channel Name: PDA Ch1 214nm@4.8nm

	RT	Width (sec)	Area	Height	% Area	Base Peak (Combined) (m/z)	Channel Name
1	0.838	2.050	7529	7290	0.22	150.97	PDA Ch1 214nm@4.8nm
2	0.857	4.500	3295360	2489034	98.17	151.92	PDA Ch1 214nm@4.8nm
3	0.921	2.750	47431	35928	1.41	545.24	PDA Ch1 214nm@4.8nm
4	1.396	2.100	6550	6126	0.20	151.96	PDA Ch1 214nm@4.8nm

Peak Results
Channel Name: MS TIC

	RT	Width (sec)	Area	Height	% Area	Base Peak (Combined) (m/z)	Channel Name
1	0.870	9.865	1651514570	424688635	100.00	272.98	MS TIC

Match Plot

