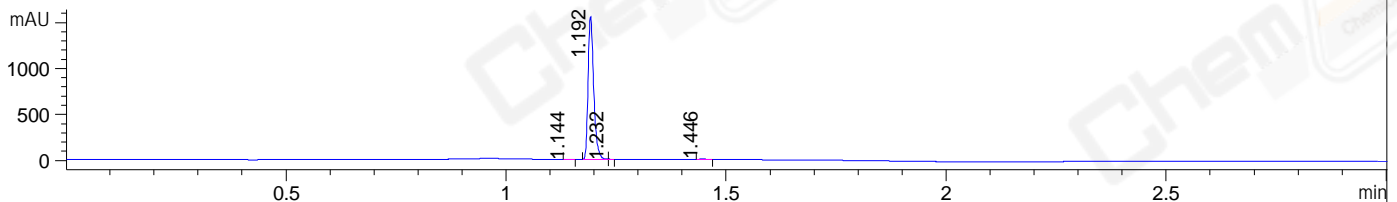
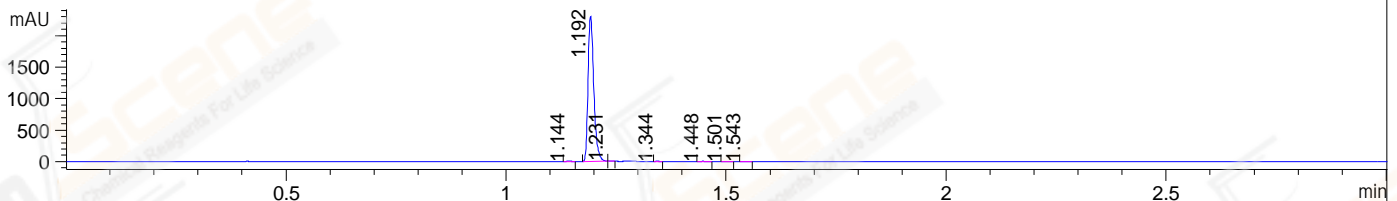


File ..DATA\2020\20200919\1111\CPK2020-915-14760.D Tgt Mass (CHM):  
Injection Date : 19 Sep 20 4:03 pm +0800 Seq. Line : 67  
Sample Name : CPK2020-915-14760 Location : P1-E-04  
Acq. Operator : zyj\_1547 Inj : 1  
Spec. Reported : MS Integration Inj Volume : 1 ul  
Acq. Method : D:\Chem32\1\data\2020\20200919\1111\1-POS-3MIN.M  
Analysis Method : D:\CHEM32\1\DATA\2020\20200919\1111\1-POS-3MIN.M  
CAS NO. : 779353-01-4  
Method Info : Mobile Phase: A: water(0.01%TFA) B:ACN(0.01%TFA)  
Gradient: 5% to 95%B within 1.3 min  
Flow Rate :1.8ml/min  
Column :SunFire C18, 4.6\*50mm,3.5um A-RP-624

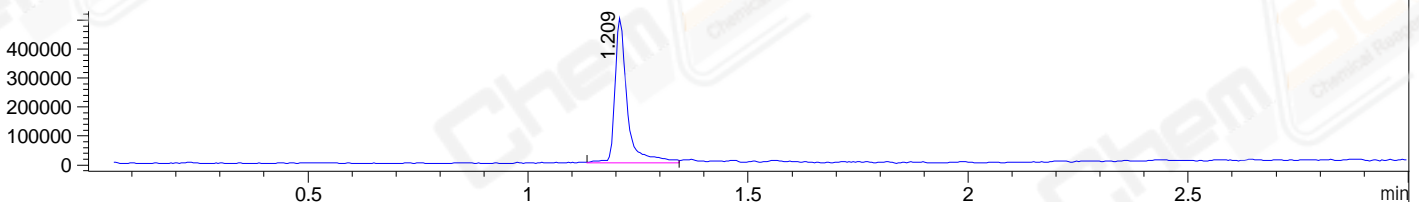
DAD1 B, Sig=214,4 Ref=off



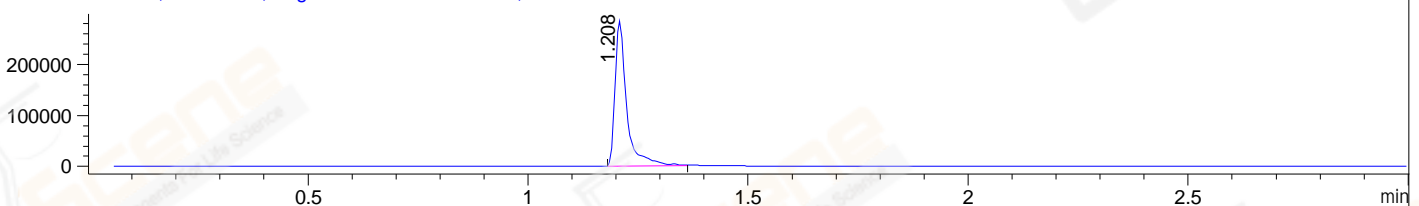
DAD1 C, Sig=254,4 Ref=off



MSD1 TIC, MS File ES-API, Pos, Scan, Frag: 70



Ion 397, MSD1 397, Target Mass 396 +H Positive, EIC=396.7:397.7



Integration Results for DAD1 B, Sig=214,4 Ref=off

RetTim	Width	Area	Height	Area%	MS (+)
1.14	0.02	2.44	2.68	0.18	137
1.19	0.01	1372.82	1558.72	99.16	397
1.23	0.01	1.19	2.97	0.09	397
1.45	0.02	7.99	8.54	0.58	137

Integration Results for DAD1 C, Sig=254,4 Ref=off

RetTim	Width	Area	Height	Area%	MS (+)
1.14	0.02	2.92	3.19	0.14	137
1.19	0.02	2088.65	2308.48	99.22	397
1.23	0.01	2.52	5.28	0.12	397
1.34	0.01	2.00	2.78	0.10	137
1.45	0.02	3.57	3.58	0.17	137
1.50	0.01	2.95	3.62	0.14	137
1.54	0.01	2.36	3.01	0.11	137

Integration Results for MSD1 TIC, MS File

1.21 0.03 973944.75 498970.03 100.00 397

RetTim	Width	Area	Height	Area%	MS (+)
--------	-------	------	--------	-------	--------

Ret. Time: 1.21

<<<< POSITIVE SPECTRA >>>>

ES-API Positive

