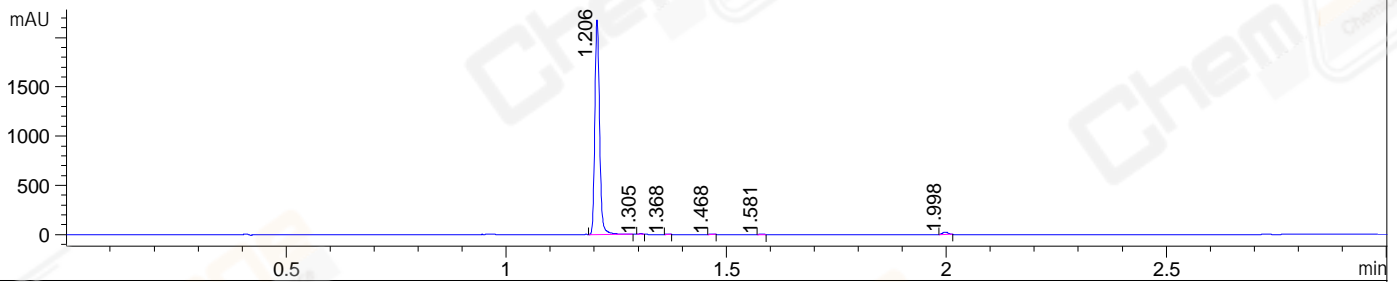
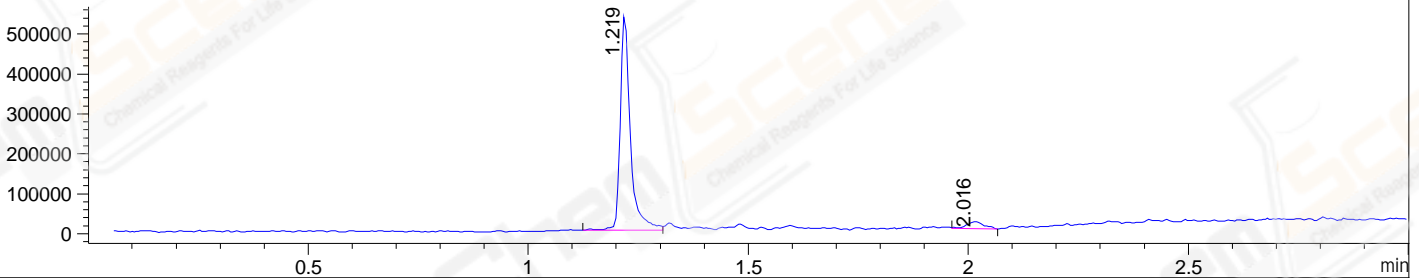


File ..DATA\2021\20210315\1305\CPK2021-315-14761.D Tgt Mass (CHM):
 Injection Date : 15 Mar 21 7:58 pm +0800 Seq. Line : 137
 Sample Name : CPK2021-315-14761 Location : P1-E-06
 Acq. Operator : yrz_1364 Inj : 1
 Spec. Reported : MS Integration Inj Volume : 1 ul
 Acq. Method : D:\Chem32\1\data\2021\20210315\1305\1-POS-3MIN.M
 Analysis Method : D:\CHEM32\1\DATA\2021\20210315\1305\1-POS-3MIN.M
 CAS NO. : 779353-01-4
 Method Info : Mobile Phase: A: water(0.01%TFA) B:ACN(0.01%TFA)
 Gradient: 5% to 95%B within 1.3 min
 Flow Rate :1.8ml/min
 Column :SunFire C18, 4.6*50mm,3.5um A-RP-698

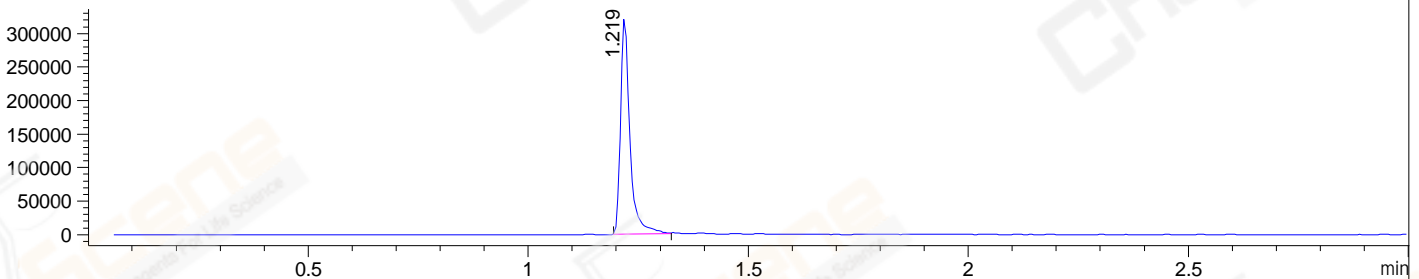
DAD1 C, Sig=254,4 Ref=off



MSD1 TIC, MS File ES-API, Pos, Scan, Frag: 70



Ion 397, MSD1 397, Target Mass 396 +H Positive, EIC=396.7:397.7



Integration Results for DAD1 C, Sig=254,4 Ref=off

RetTim	Width	Area	Height	Area%	MS(+)
1.21	0.01	1625.90	2189.12	98.05	397
1.31	0.01	3.76	6.64	0.23	397
1.37	0.01	1.48	2.73	0.09	397
1.47	0.01	2.90	4.52	0.17	397
1.58	0.01	2.50	3.87	0.15	557
2.00	0.02	21.69	23.05	1.31	464

Integration Results for MSD1 TIC, MS File

RetTim	Width	Area	Height	Area%	MS(+)
1.22	0.02	864111.88	536873.38	94.76	397
2.02	0.04	47793.28	18270.21	5.24	305

Ret. Time: 1.22 <<<< POSITIVE SPECTRA >>>>



Ret. Time: 2.02

