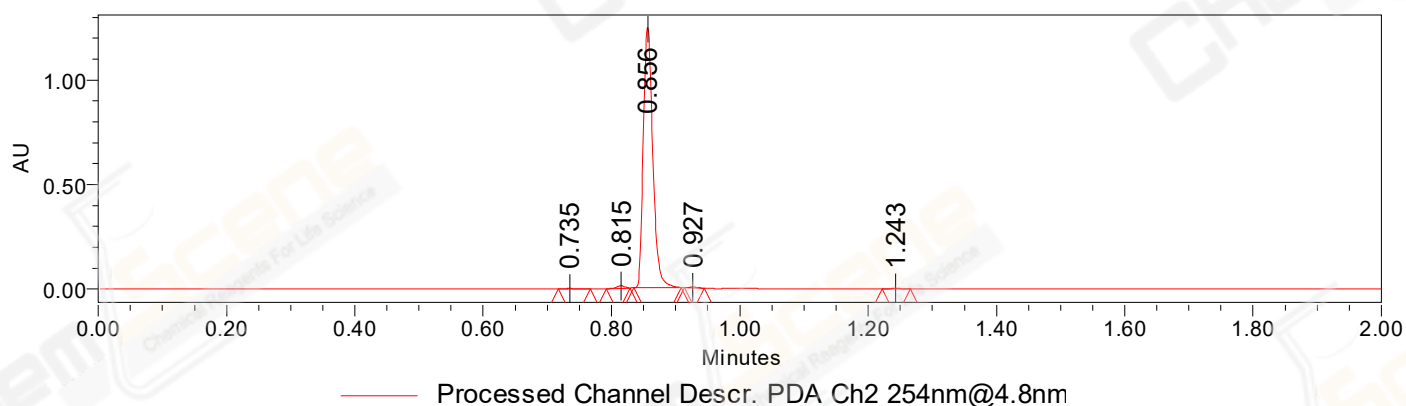


## SAMPLE INFORMATION

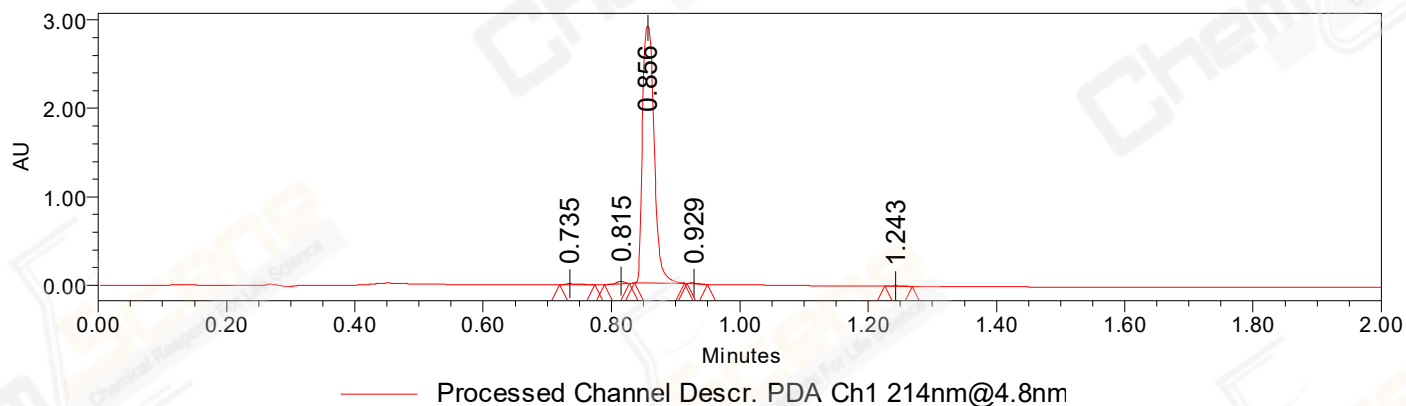
CAS NO.: 2052301-24-1  
Sample information: 2:C,7  
Vial: 1  
Injection #: 1  
Injection Volume: 0.50 ul  
Run Time: 2.8 Minutes  
Sample Set Name: 20220404

Acquired By: LY  
Date Acquired: 4/4/2022 3:32:40 PM CST  
Acq. Method Set: 1\_POS\_2MIN  
Date Processed: 4/6/2022 10:06:48 AM CST,  
Processing Method: PDA\_01, MS\_scan  
Channel Name: PDA Ch1 214nm@4.8nm, MS TIC,  
Column Name:

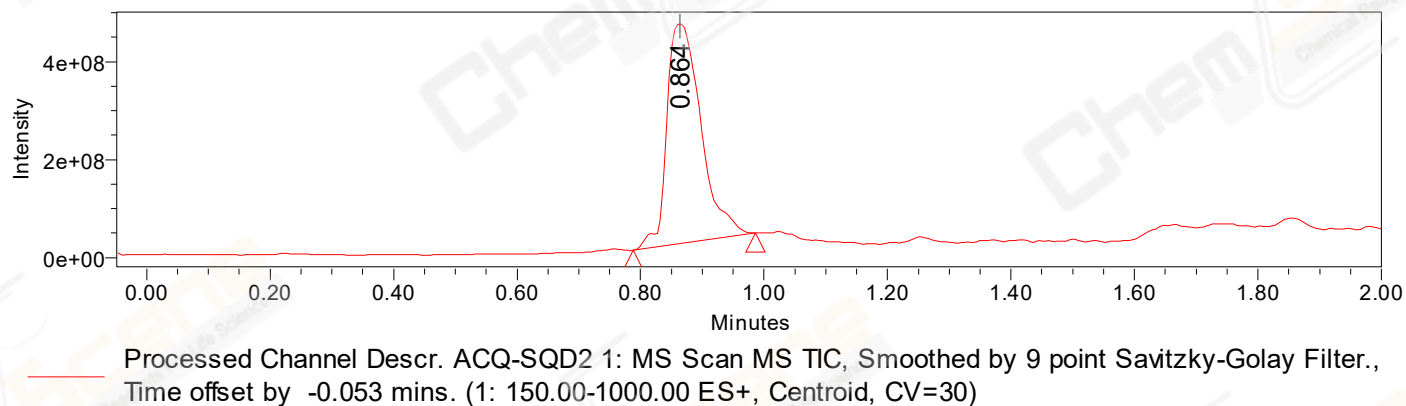
### Auto-Scaled Chromatogram



### Auto-Scaled Chromatogram



### Auto-Scaled Chromatogram



Peak Results  
Channel Name: PDA Ch2 254nm@4.8nm

	RT	Width (sec)	Area	Height	% Area	Base Peak (Combined) (m/z)	Channel Name
1	0.735	2.950	4488	3071	0.35	152.62	PDA Ch2 254nm@4.8nm
2	0.815	2.250	10749	11863	0.83	270.94	PDA Ch2 254nm@4.8nm
3	0.856	4.400	1278508	1243946	98.38	270.92	PDA Ch2 254nm@4.8nm
4	0.927	1.850	3173	3232	0.24	545.26	PDA Ch2 254nm@4.8nm
5	1.243	2.600	2647	2483	0.20	152.89	PDA Ch2 254nm@4.8nm

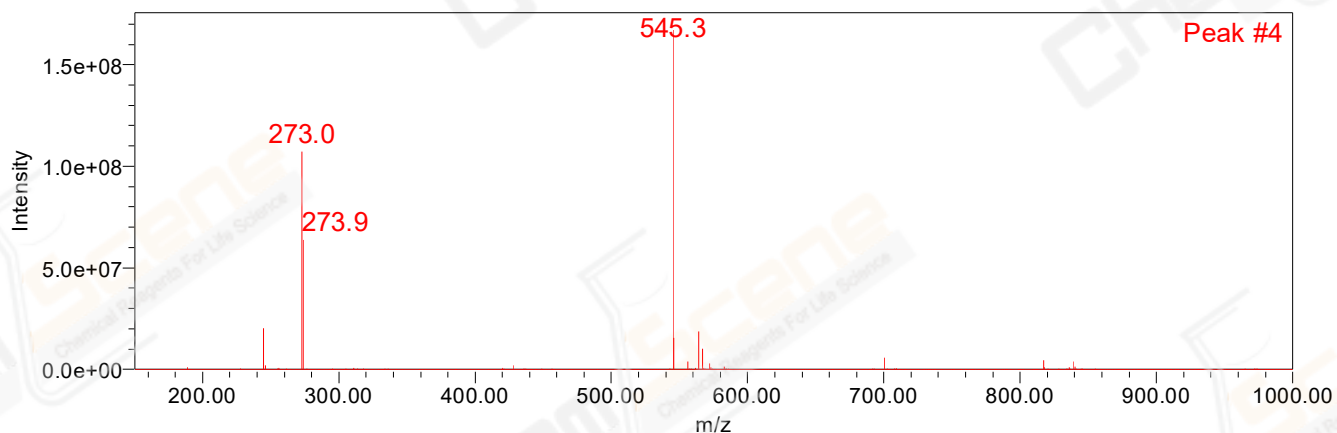
Peak Results  
Channel Name: PDA Ch1 214nm@4.8nm

	RT	Width (sec)	Area	Height	% Area	Base Peak (Combined) (m/z)	Channel Name
1	0.735	3.300	20431	12366	0.55	314.13	PDA Ch1 214nm@4.8nm
2	0.815	2.350	28134	30806	0.76	270.94	PDA Ch1 214nm@4.8nm
3	0.856	4.700	3644573	2902059	98.34	270.92	PDA Ch1 214nm@4.8nm
4	0.929	1.950	5371	6087	0.14	545.15	PDA Ch1 214nm@4.8nm
5	1.243	2.600	7651	6809	0.21	152.90	PDA Ch1 214nm@4.8nm

Peak Results  
Channel Name: MS TIC

	RT	Width (sec)	Area	Height	% Area	Base Peak (Combined) (m/z)	Channel Name
1	0.864	11.896	1722061492	450813785	100.00	545.23	MS TIC

Match Plot



Retention Time 0.864 Channel Name MS TIC