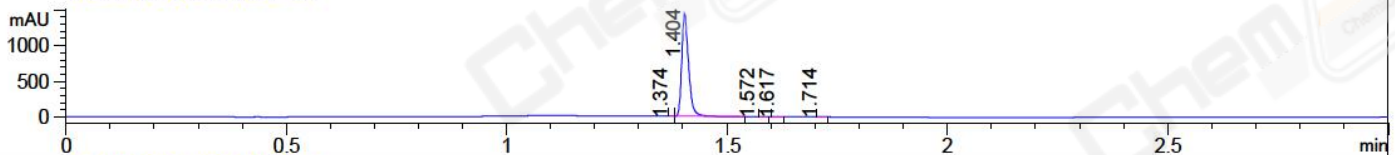
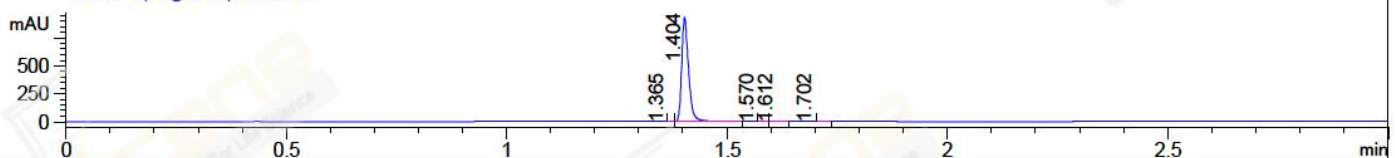


File ..\2018\20180313\20180313\CPK2018-313-14819.D Tgt Mass (CHM):
 Injection Date : 13 Mar 18 7:36 pm +0800 Seq. Line : 135
 Sample Name : CPK2018-313-14819 Location : P2-E-03
 Acq. Operator : SYSTEM Inj : 1
 Spec. Reported : MS Integration Inj Volume : 1 ul
 Acq. Method : D:\LCMS03\Data\2018\20180313\20180313\1-POS-3MIN.M
 Analysis Method : D:\LCMS03\Data\2018\20180313\20180313\1-POS-3MIN.M
 Catalog No : CS-2015 Batch#14819
 Method Info : Mobile Phase: A: water(0.01%TFA) B:ACN(0.01%TFA)
 Gradient: 5% to 95%B within 1.3 min
 Flow Rate :1.8ml/min
 Column :SunFire C18, 4.6*50mm,3.5um A-RP-186
 Oven Temperature : 45C

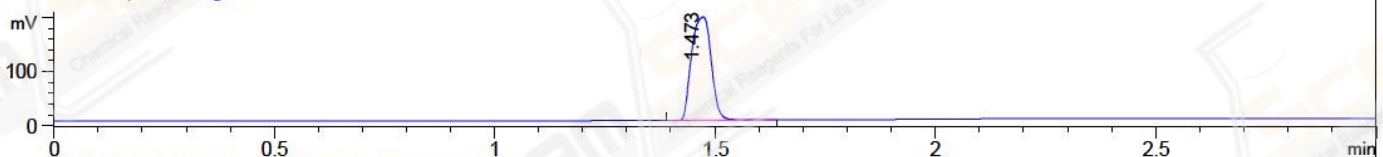
DAD1 A, Sig=214,4 Ref=off



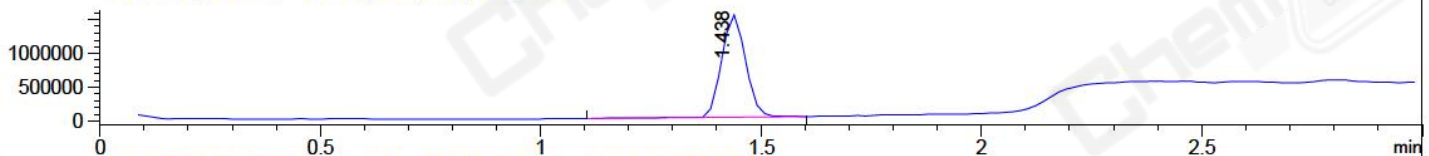
DAD1 B, Sig=254,4 Ref=off



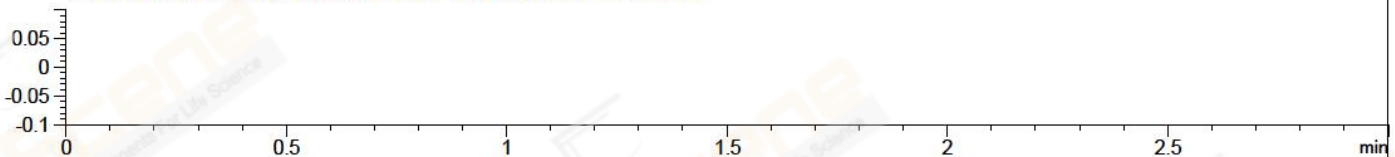
ELS1 A, ELSD Signal



MSD1 TIC, MS File ES-API, Pos, Scan, Frag: 70



Ion 536.1, MSD1 536.1, Target Mass 535.1 +H Positive, EIC=535.8:536.8



Integration Results for DAD1 A, Sig=214,4 Ref=off

RetTim	Width	Area	Height	Area%	MS (+)
1.37	0.01	0.04	0.10	0.00	499
1.40	0.02	1543.74	1429.21	99.92	499
1.57	0.02	0.25	0.11	0.02	233
1.62	0.02	0.49	0.44	0.03	233
1.71	0.01	0.40	0.48	0.03	233

Integration Results for DAD1 B, Sig=254,4 Ref=off

RetTim	Width	Area	Height	Area%	MS (+)
1.37	0.01	0.16	0.00	0.02	499
1.40	0.02	1002.14	932.22	99.86	499
1.57	0.02	0.25	-0.01	0.02	233
1.61	0.03	0.78	0.48	0.08	233
1.70	0.02	0.25	0.00	0.03	233

Integration Results for ELS1 A, ELSD Signal

RetTim	Width	Area	Height	Area%	MS (+)
--------	-------	------	--------	-------	--------

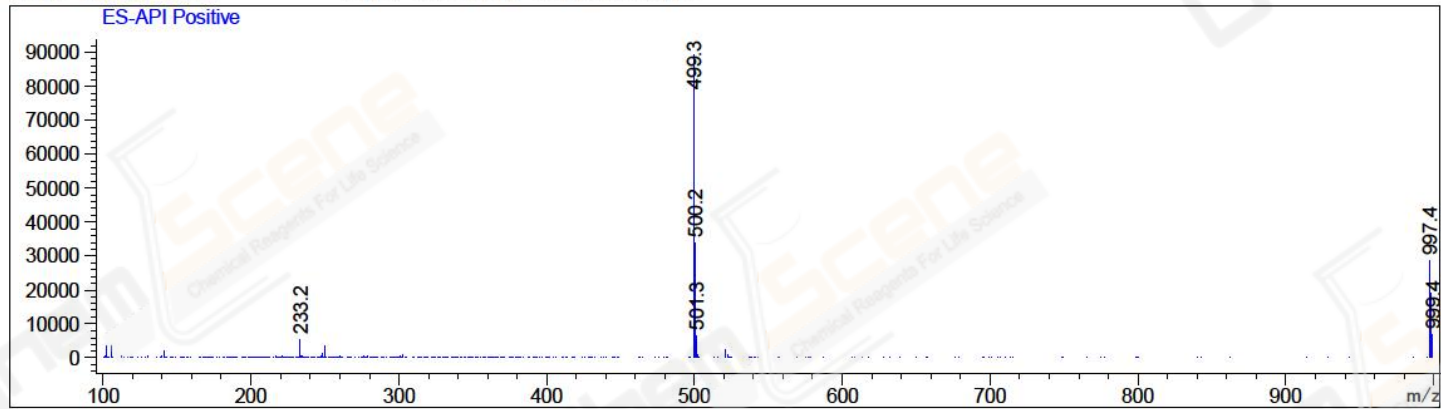
1.47	0.05	587.86	190.44	100.00	499
------	------	--------	--------	--------	-----

Integration Results for MSD1 TIC, MS File

RetTim	Width	Area	Height	Area%	MS (+)
1.44	0.06	5791342.50	1521162.13	100.00	499

Ret. Time: 1.44

<<<< POSITIVE SPECTRA >>>>



*** End of Report ***