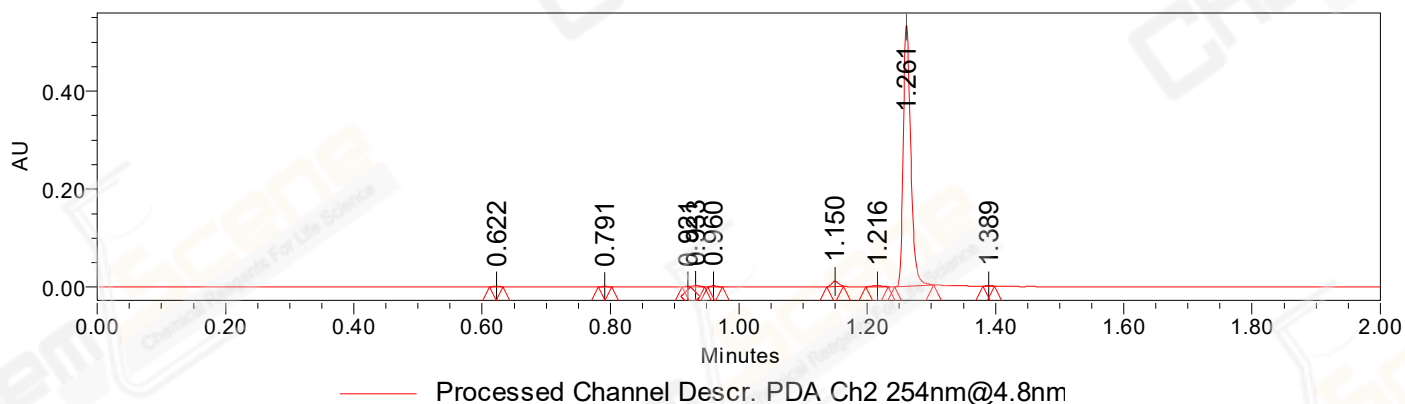


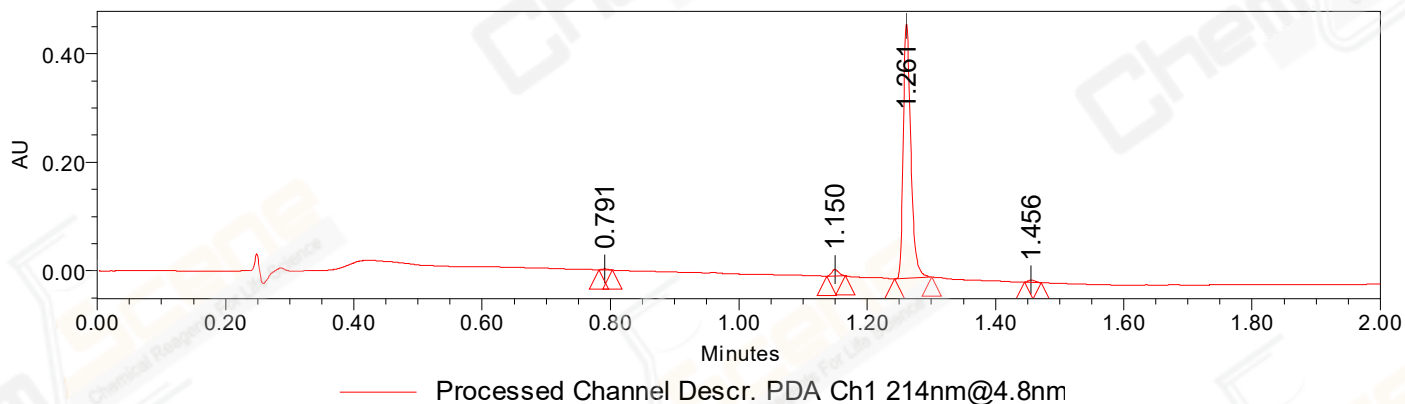
## SAMPLE INFORMATION

CAS NO.:	35265-83-9	Acquired By:	LY
Sample information:	20211223115001	Date Acquired:	12/23/2021 3:13:17 PM CST
Vial:	2:A,6	Acq. Method Set:	1_POS_2MIN
Injection #:	1	Date Processed:	12/24/2021 9:16:42 AM CST,
Injection Volume:	0.10 ul	Processing Method:	PDA_01, MS_scan
Run Time:	2.8 Minutes	Channel Name:	PDA Ch1 214nm@4.8nm, MS TIC,
Sample Set Name:	20211223	Column Name:	Poroshell 120 EC-C18 A-RP-929

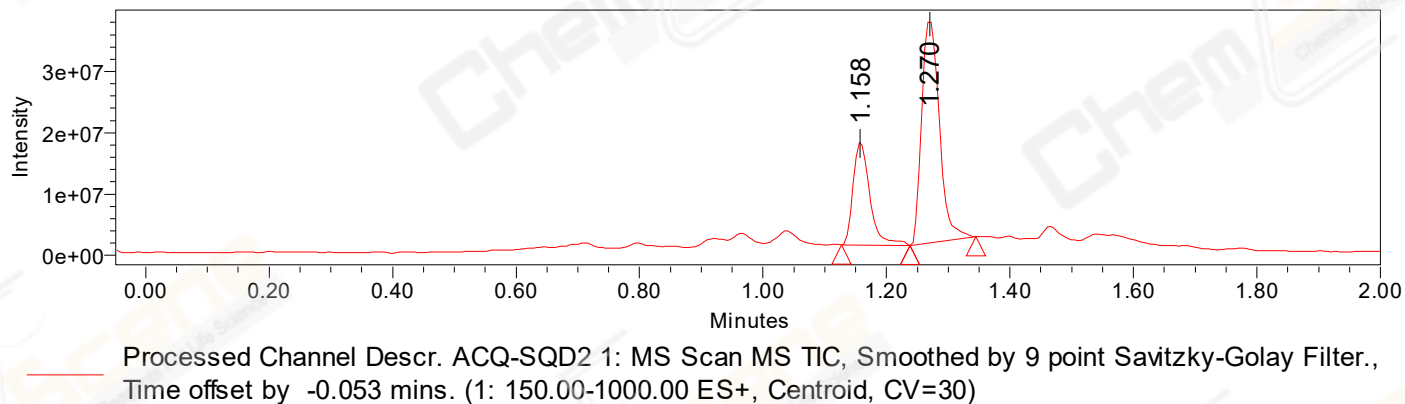
### Auto-Scaled Chromatogram



### Auto-Scaled Chromatogram



### Auto-Scaled Chromatogram



Peak Results  
Channel Name: PDA Ch2 254nm@4.8nm

	RT	Width (sec)	Area	Height	% Area	Channel Name
1	0.622	1.250	464	813	0.10	PDA Ch2 254nm@4.8nm
2	0.791	1.250	836	1350	0.19	PDA Ch2 254nm@4.8nm
3	0.921	0.800	644	1187	0.14	PDA Ch2 254nm@4.8nm
4	0.933	1.300	2132	2805	0.48	PDA Ch2 254nm@4.8nm
5	0.960	1.350	1316	1991	0.29	PDA Ch2 254nm@4.8nm
6	1.150	1.600	7683	10644	1.71	PDA Ch2 254nm@4.8nm
7	1.216	2.050	2169	1721	0.48	PDA Ch2 254nm@4.8nm
8	1.261	3.650	432186	532410	96.46	PDA Ch2 254nm@4.8nm
9	1.389	1.050	599	1068	0.13	PDA Ch2 254nm@4.8nm

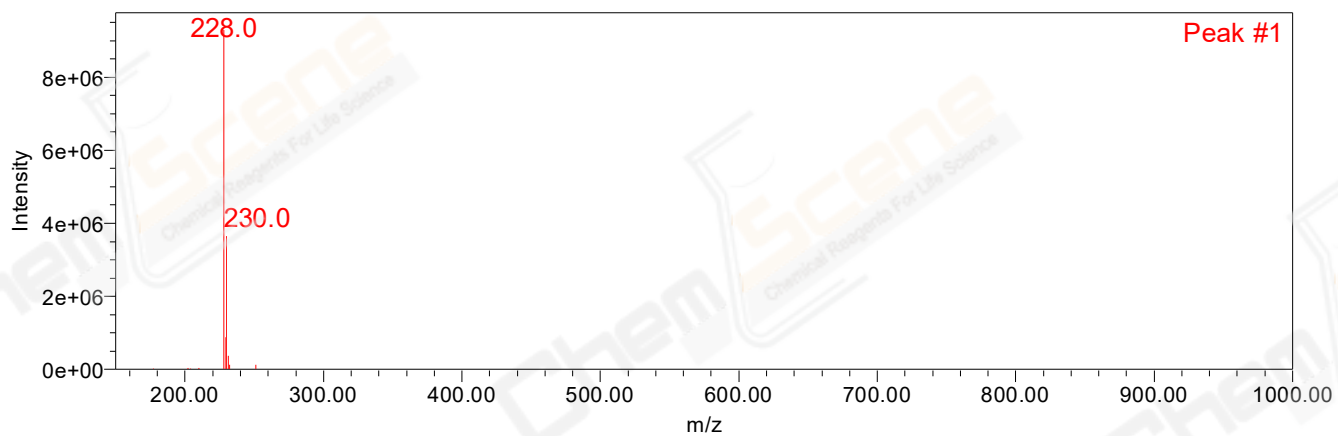
Peak Results  
Channel Name: PDA Ch1 214nm@4.8nm

	RT	Width (sec)	Area	Height	% Area	Channel Name
1	0.791	1.300	1315	2079	0.33	PDA Ch1 214nm@4.8nm
2	1.150	1.700	8721	11627	2.20	PDA Ch1 214nm@4.8nm
3	1.261	3.500	383082	468938	96.68	PDA Ch1 214nm@4.8nm
4	1.456	1.600	3133	4257	0.79	PDA Ch1 214nm@4.8nm

Peak Results  
Channel Name: MS TIC

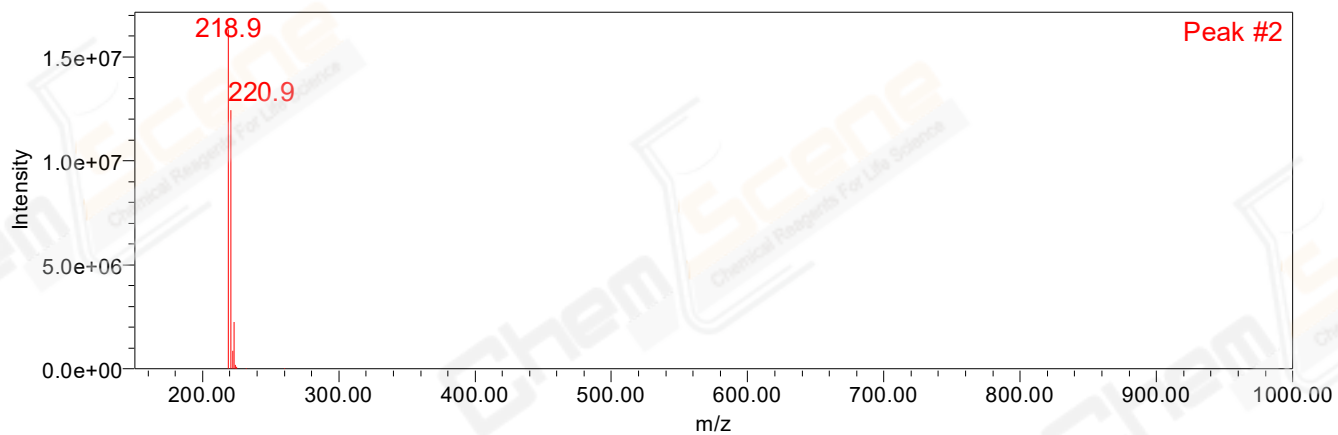
	RT	Width (sec)	Area	Height	% Area	Channel Name
1	1.158	6.673	31800345	16830999	30.55	MS TIC
2	1.270	6.384	72290866	36671214	69.45	MS TIC

### Match Plot



Retention Time 1.158 Channel Name MS TIC

### Match Plot



Retention Time 1.270 Channel Name MS TIC