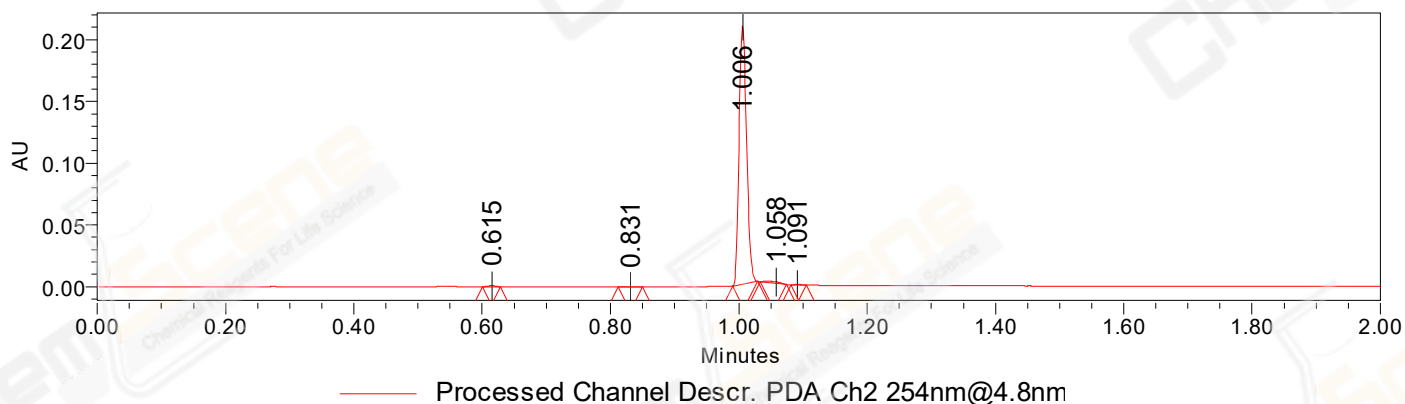


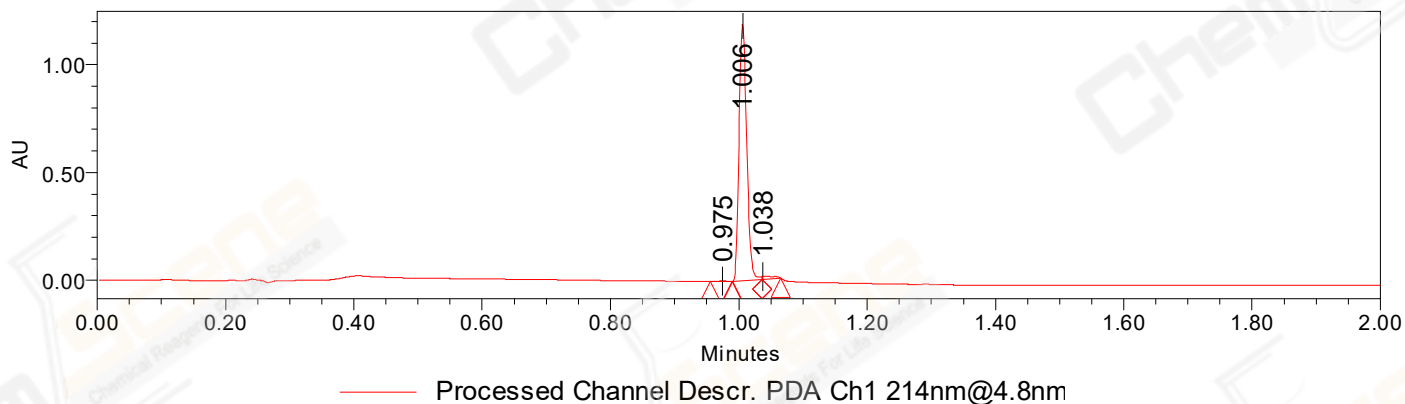
SAMPLE INFORMATION

CAS NO.:	256373-96-3	Acquired By:	LY
Sample information:		Date Acquired:	5/25/2022 12:13:59 PM CST
Vial:	1:E,7	Acq. Method Set:	1_POS_2MIN
Injection #:	1	Date Processed:	5/25/2022 7:00:28 PM CST,
Injection Volume:	0.50 ul	Processing Method:	PDA_01, MS_scan
Run Time:	2.8 Minutes	Channel Name:	PDA Ch1 214nm@4.8nm, MS TIC,
Sample Set Name:	20220525	Column Name:	A-RP-985

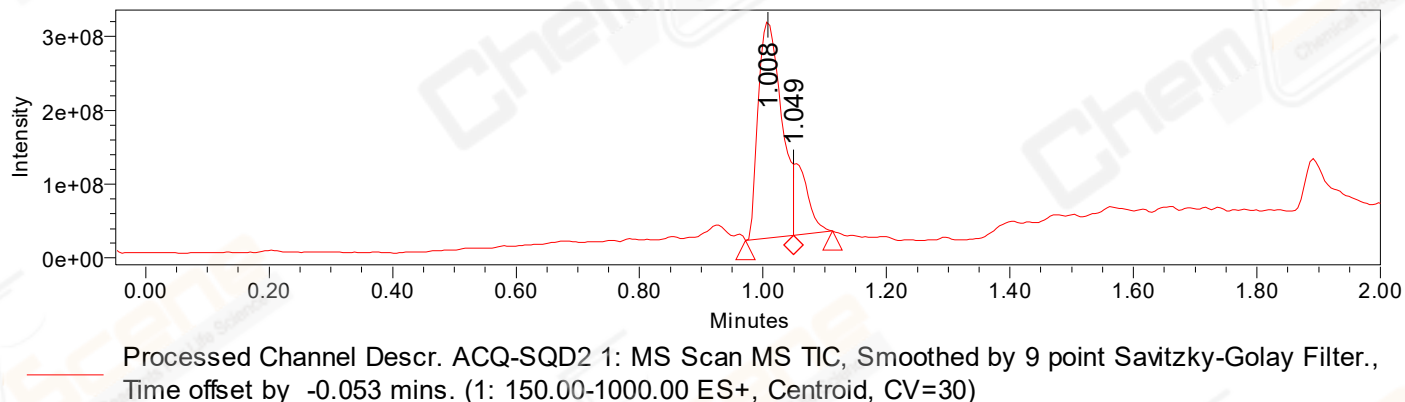
Auto-Scaled Chromatogram



Auto-Scaled Chromatogram



Auto-Scaled Chromatogram



Peak Results
Channel Name: PDA Ch2 254nm@4.8nm

	RT	Width (sec)	Area	Height	% Area	Base Peak (Combined) (m/z)	Channel Name
1	0.615	1.650	856	874	0.49	151.98	PDA Ch2 254nm@4.8nm
2	0.831	2.300	267	245	0.15	151.10	PDA Ch2 254nm@4.8nm
3	1.006	2.350	171736	209022	98.00	151.96	PDA Ch2 254nm@4.8nm
4	1.058	2.450	2042	1337	1.17	809.16	PDA Ch2 254nm@4.8nm
5	1.091	1.400	339	438	0.19	174.01	PDA Ch2 254nm@4.8nm

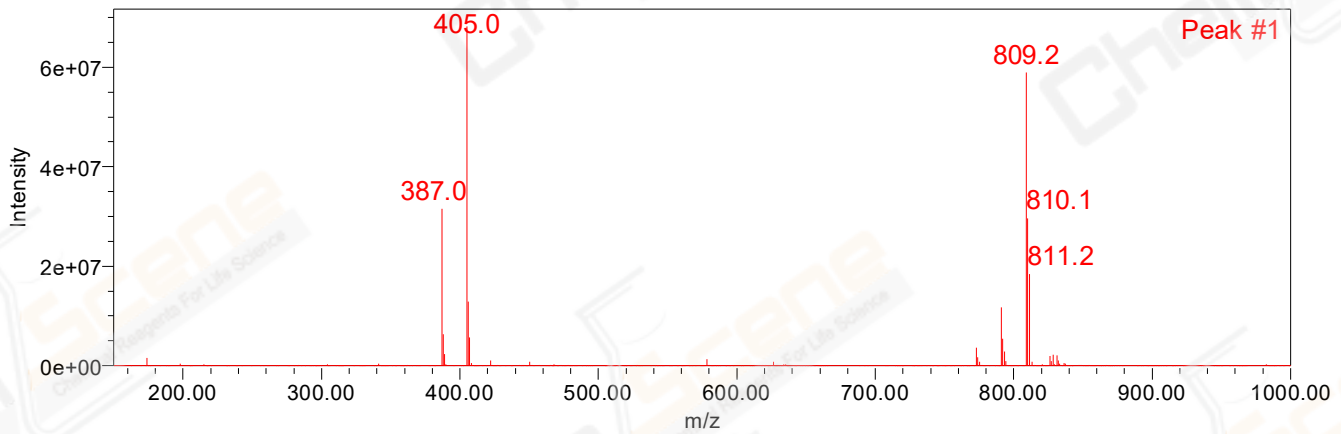
Peak Results
Channel Name: PDA Ch1 214nm@4.8nm

	RT	Width (sec)	Area	Height	% Area	Base Peak (Combined) (m/z)	Channel Name
1	0.975	2.050	2342	2179	0.23	228.08	PDA Ch1 214nm@4.8nm
2	1.006	2.800	994404	1189129	98.08	151.95	PDA Ch1 214nm@4.8nm
3	1.038	1.700	17096	13678	1.69	809.16	PDA Ch1 214nm@4.8nm

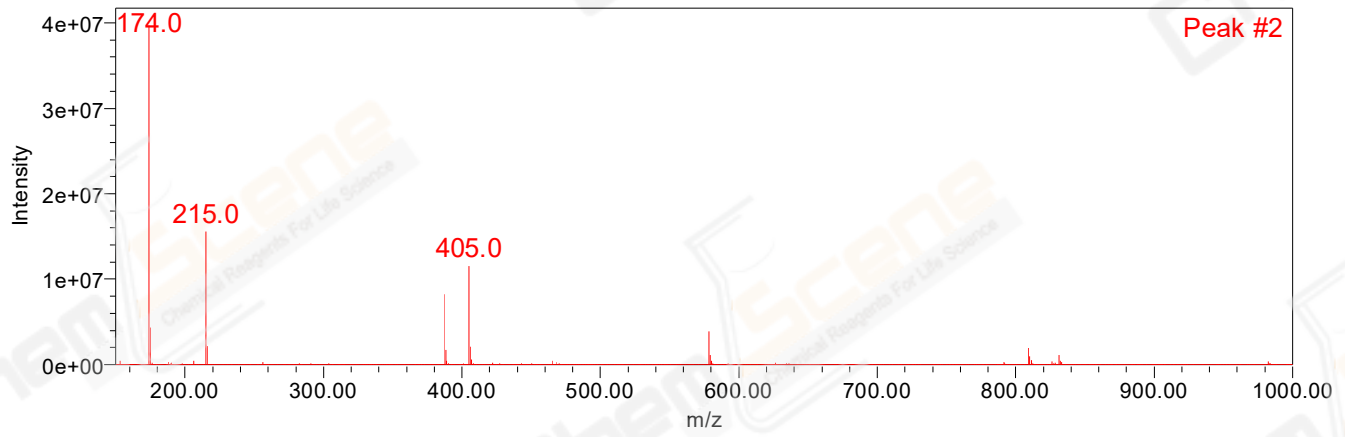
Peak Results
Channel Name: MS TIC

	RT	Width (sec)	Area	Height	% Area	Base Peak (Combined) (m/z)	Channel Name
1	1.008	4.642	769116698	293591199	83.36	405.05	MS TIC
2	1.049	3.772	153493374	96083819	16.64	173.98	MS TIC

Match Plot



Match Plot



Retention Time 1.049 Channel Name MS TIC