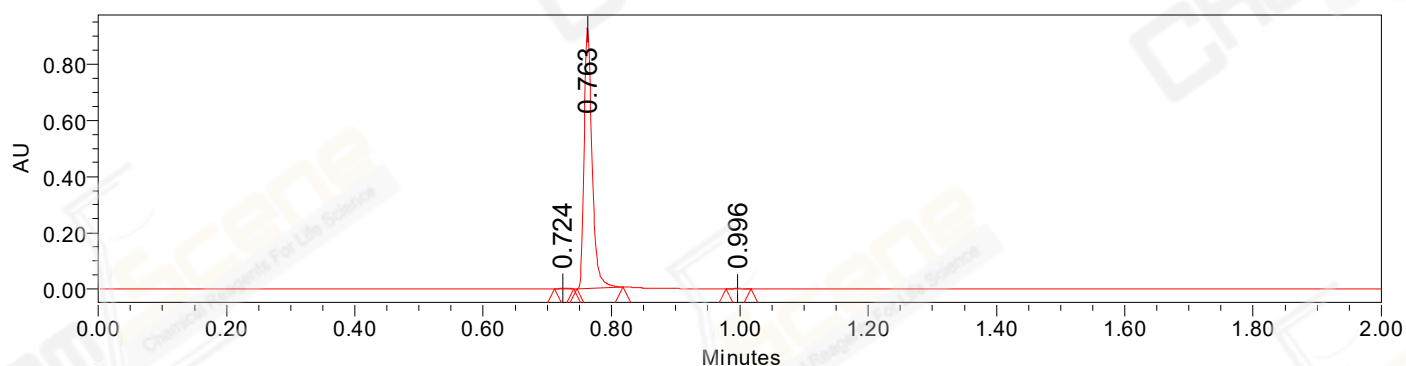


SAMPLE INFORMATION

CAS NO.: 1371587-51-7
Sample information:
Vial: 1:D,5
Injection #: 1
Injection Volume: 0.50 ul
Run Time: 2.8 Minutes
Sample Set Name: 20220516

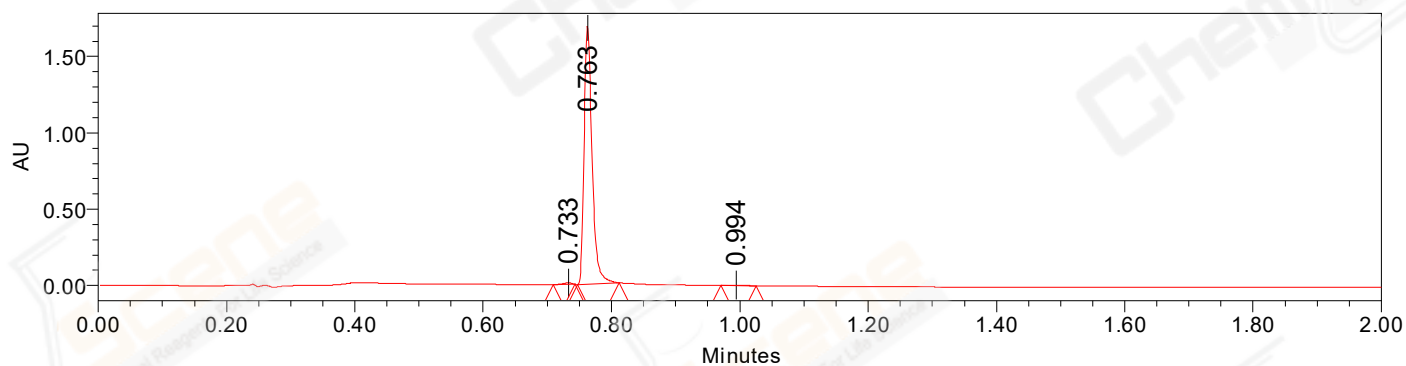
Acquired By: LY
Date Acquired: 5/16/2022 1:52:22 PM CST
Acq. Method Set: 1_POS_2MIN
Date Processed: 5/16/2022 5:56:03 PM CST,
Processing Method: PDA_01, MS_scan
Channel Name: PDA Ch1 214nm@4.8nm, MS TIC,
Column Name: A-RP-985

Auto-Scaled Chromatogram



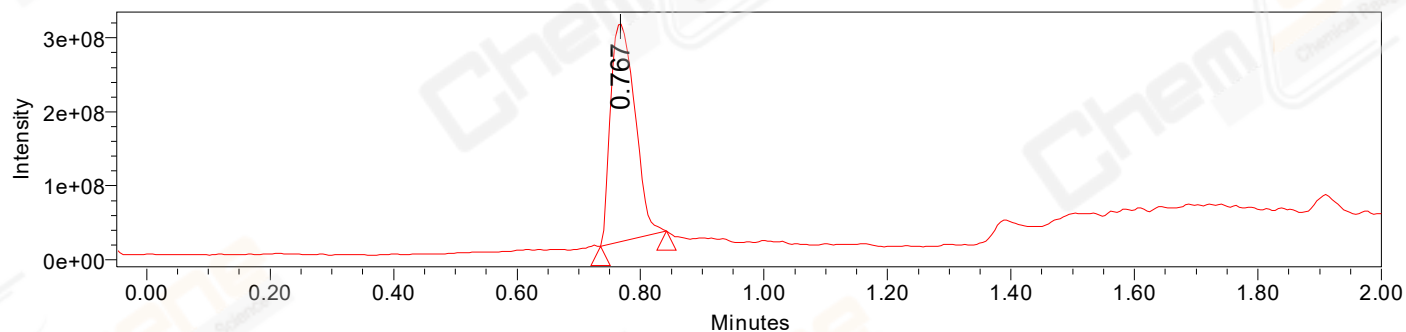
Processed Channel Descr. PDA Ch2 254nm@4.8nm

Auto-Scaled Chromatogram



Processed Channel Descr. PDA Ch1 214nm@4.8nm

Auto-Scaled Chromatogram



Processed Channel Descr. ACQ-SQD2 1: MS Scan MS TIC, Smoothed by 9 point Savitzky-Golay Filter., Time offset by -0.053 mins. (1: 150.00-1000.00 ES+, Centroid, CV=30)

Peak Results
Channel Name: PDA Ch2 254nm@4.8nm

	RT	Width (sec)	Area	Height	% Area	Base Peak (Combined) (m/z)	Channel Name
1	0.724	1.800	2279	2421	0.28	151.03	PDA Ch2 254nm@4.8nm
2	0.763	4.300	804752	926360	99.60	151.00	PDA Ch2 254nm@4.8nm
3	0.996	2.350	961	1006	0.12	151.79	PDA Ch2 254nm@4.8nm

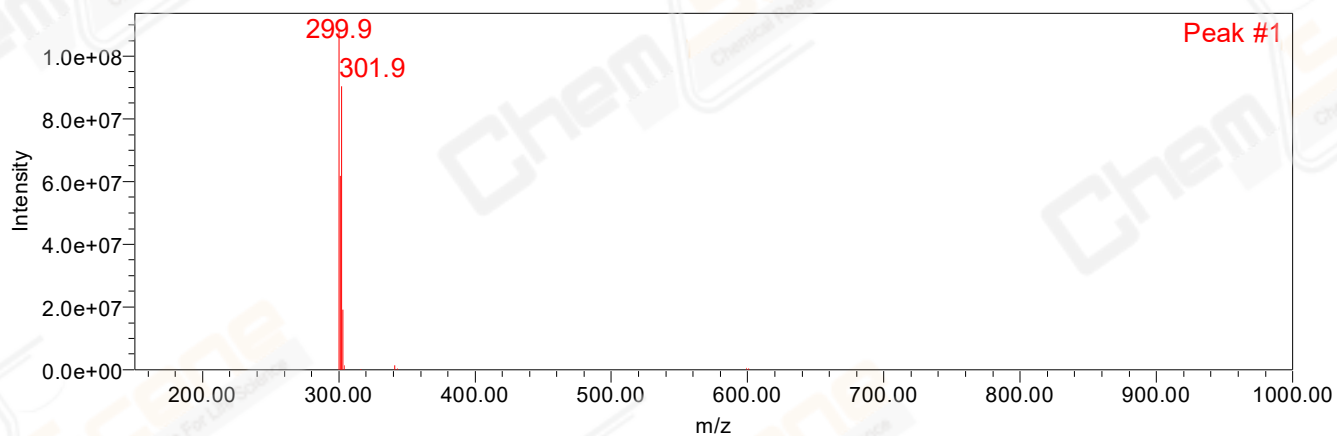
Peak Results
Channel Name: PDA Ch1 214nm@4.8nm

	RT	Width (sec)	Area	Height	% Area	Base Peak (Combined) (m/z)	Channel Name
1	0.733	2.000	8171	9317	0.55	202.18	PDA Ch1 214nm@4.8nm
2	0.763	3.900	1464384	1688426	99.22	151.03	PDA Ch1 214nm@4.8nm
3	0.994	3.300	3373	2232	0.23	228.10	PDA Ch1 214nm@4.8nm

Peak Results
Channel Name: MS TIC

	RT	Width (sec)	Area	Height	% Area	Base Peak (Combined) (m/z)	Channel Name
1	0.767	6.384	809477850	297660483	100.00	299.94	MS TIC

Match Plot



Retention Time 0.767 Channel Name MS TIC