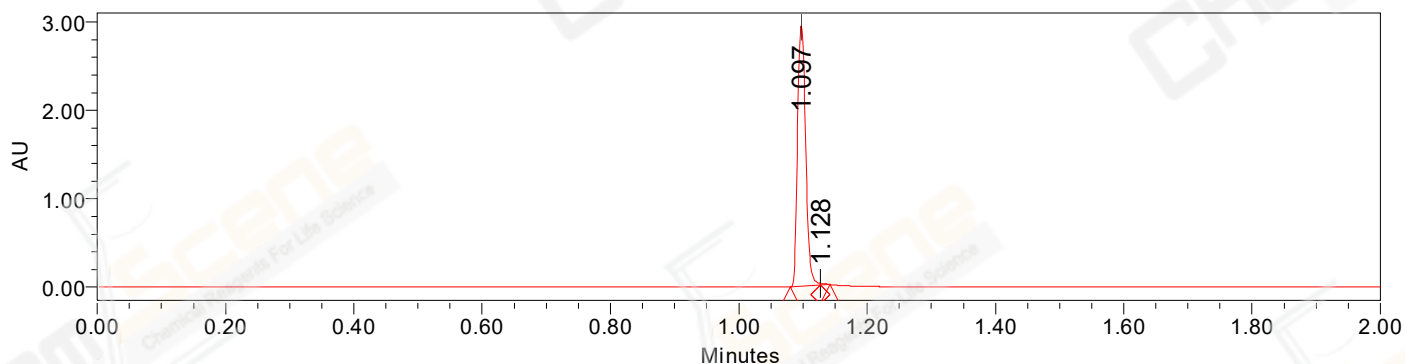


SAMPLE INFORMATION

CAS NO.: 170569-86-5
Sample information:
Vial: 1:B,7
Injection #: 1
Injection Volume: 0.50 ul
Run Time: 2.8 Minutes
Sample Set Name: 20220516

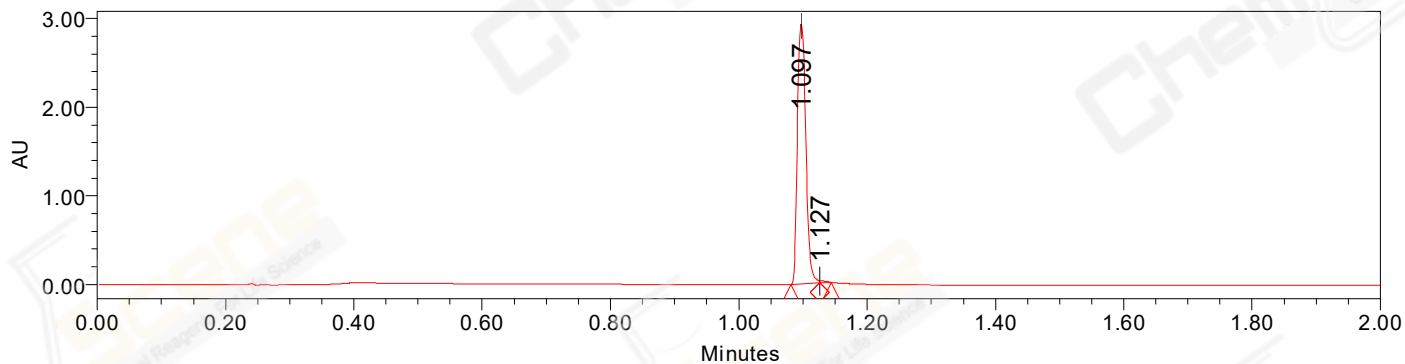
Acquired By: LY
Date Acquired: 5/16/2022 12:59:23 PM CST
Acq. Method Set: 1_POS_2MIN
Date Processed: 5/16/2022 4:04:07 PM CST,
Processing Method: PDA_01, MS_scan
Channel Name: PDA Ch1 214nm@4.8nm, MS TIC,
Column Name: A-RP-985

Auto-Scaled Chromatogram



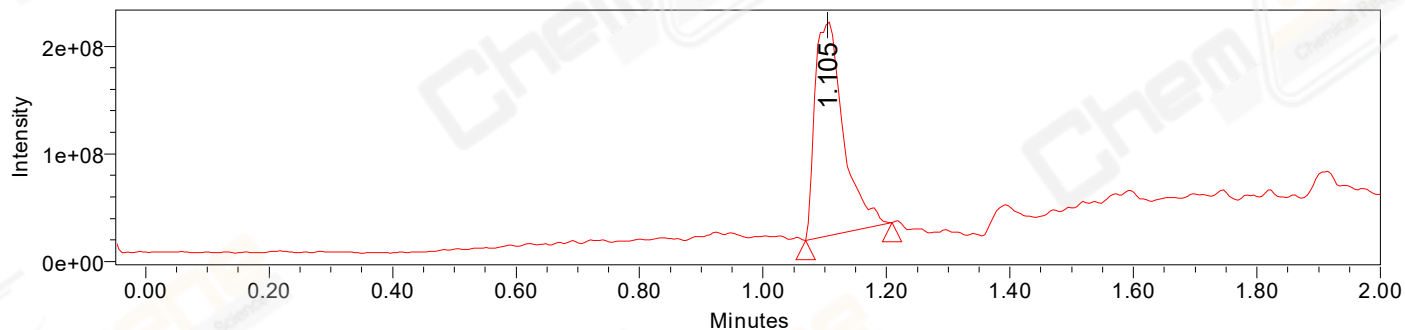
Processed Channel Descr. PDA Ch2 254nm@4.8nm

Auto-Scaled Chromatogram



Processed Channel Descr. PDA Ch1 214nm@4.8nm

Auto-Scaled Chromatogram



Processed Channel Descr. ACQ-SQD2 1: MS Scan MS TIC, Smoothed by 9 point Savitzky-Golay Filter., Time offset by -0.053 mins. (1: 150.00-1000.00 ES+, Centroid, CV=30)

Peak Results
Channel Name: PDA Ch2 254nm@4.8nm

	RT	Width (sec)	Area	Height	% Area	Base Peak (Combined) (m/z)	Channel Name
1	1.097	2.850	2606232	2946525	99.60	151.91	PDA Ch2 254nm@4.8nm
2	1.128	0.900	10594	19541	0.40	151.91	PDA Ch2 254nm@4.8nm

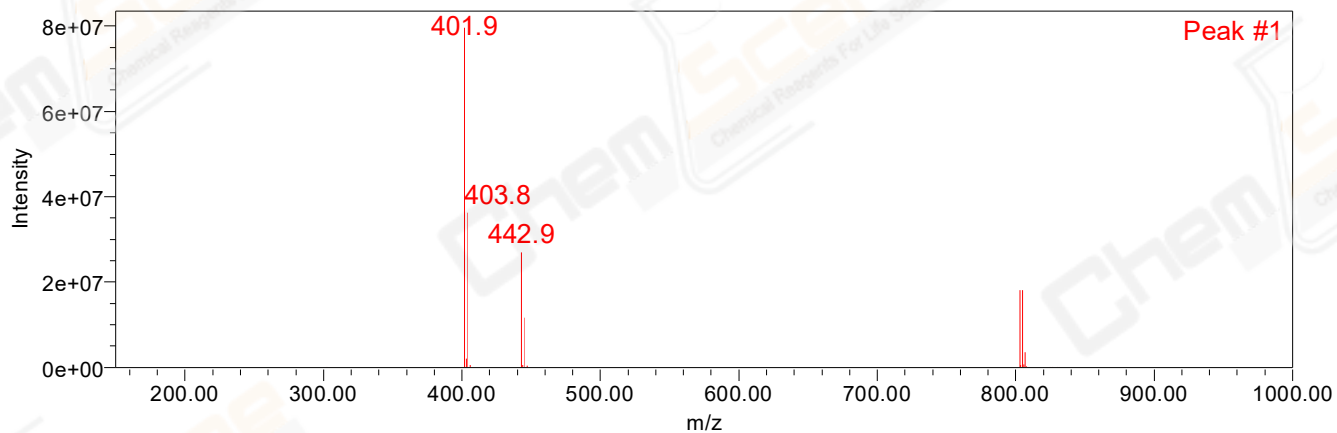
Peak Results
Channel Name: PDA Ch1 214nm@4.8nm

	RT	Width (sec)	Area	Height	% Area	Base Peak (Combined) (m/z)	Channel Name
1	1.097	2.750	2694085	2935492	99.45	151.93	PDA Ch1 214nm@4.8nm
2	1.127	1.050	14861	24288	0.55	151.92	PDA Ch1 214nm@4.8nm

Peak Results
Channel Name: MS TIC

	RT	Width (sec)	Area	Height	% Area	Base Peak (Combined) (m/z)	Channel Name
1	1.105	8.414	635785494	199283295	100.00	401.90	MS TIC

Match Plot



Retention Time 1.105 Channel Name MS TIC