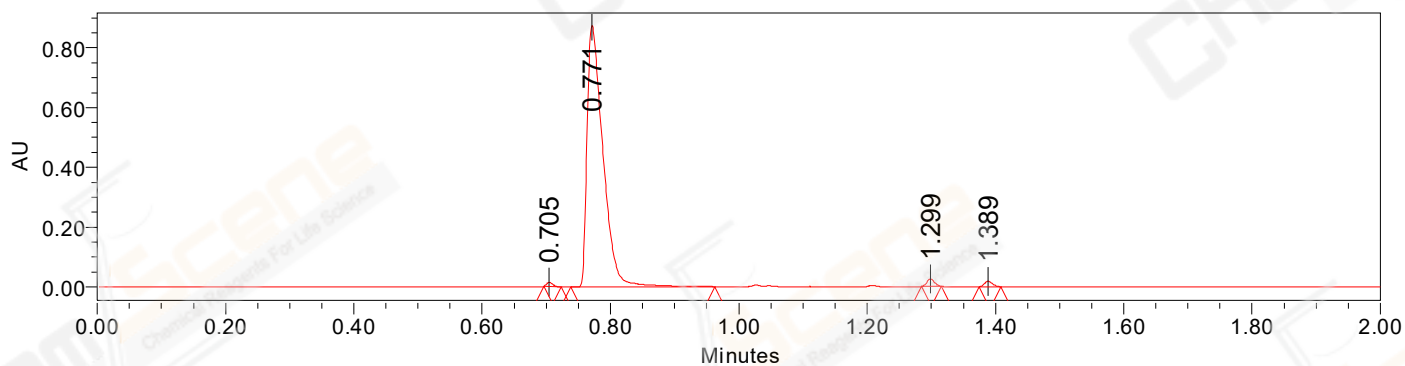


SAMPLE INFORMATION

CAS NO.: 911222-45-2
Sample information: 2:B,6
Vial: 1
Injection #: 1
Injection Volume: 0.50 ul
Run Time: 2.8 Minutes
Sample Set Name: 20220602

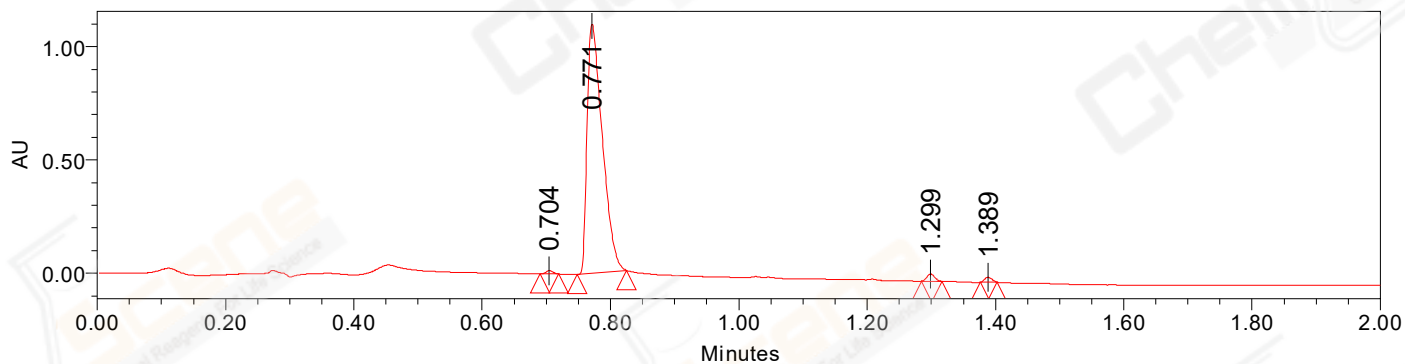
Acquired By: LY
Date Acquired: 6/2/2022 2:43:06 PM CST
Acq. Method Set: 1_POS_2MIN
Date Processed: 6/15/2022 5:54:45 PM CST,
Processing Method: PDA_01, PDA_02, MS_scan
Channel Name: PDA Ch1 214nm@4.8nm, MS TIC,
Column Name: A-RP-985

Auto-Scaled Chromatogram



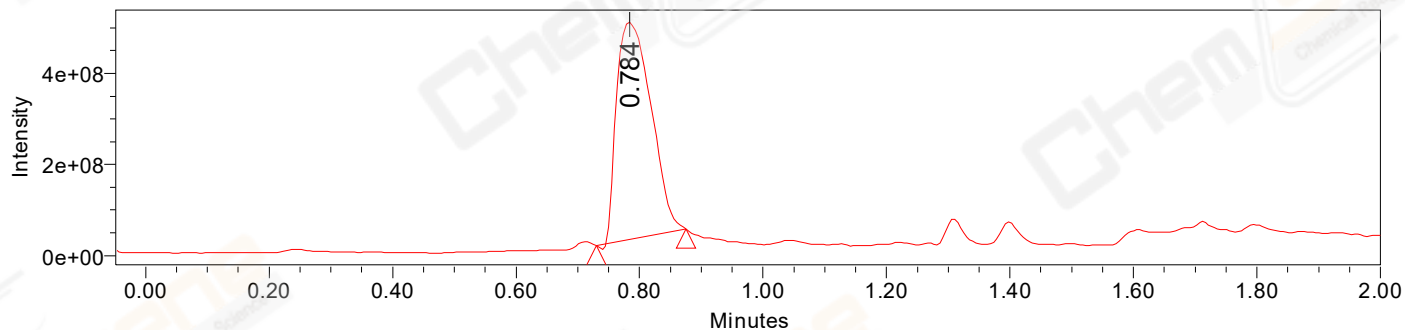
Processed Channel Descr. PDA Ch2 254nm@4.8nm

Auto-Scaled Chromatogram



Processed Channel Descr. PDA Ch1 214nm@4.8nm

Auto-Scaled Chromatogram



Processed Channel Descr. ACQ-SQD2 1: MS Scan MS TIC, Smoothed by 9 point Savitzky-Golay Filter., Time offset by -0.053 mins. (1: 150.00-1000.00 ES+, Centroid, CV=30)

Peak Results
Channel Name: PDA Ch2 254nm@4.8nm

	RT	Width (sec)	Area	Height	% Area	Base Peak (Combined) (m/z)	Channel Name
1	0.705	1.650	9680	13902	0.63	151.98	PDA Ch2 254nm@4.8nm
2	0.771	13.450	1502280	873738	97.05	358.12	PDA Ch2 254nm@4.8nm
3	1.299	1.850	20569	24672	1.33	150.41	PDA Ch2 254nm@4.8nm
4	1.389	2.050	15442	17901	1.00	151.96	PDA Ch2 254nm@4.8nm

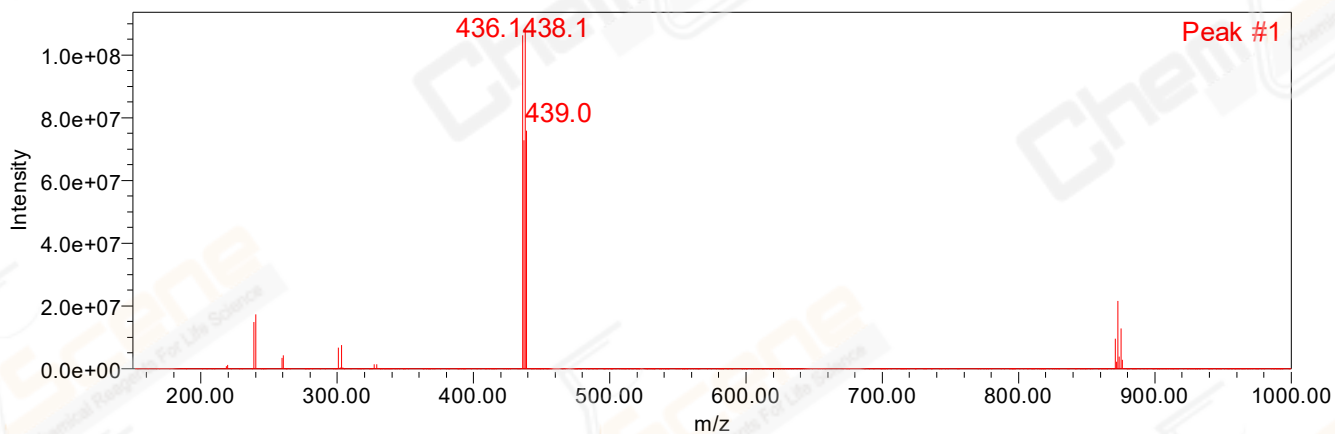
Peak Results
Channel Name: PDA Ch1 214nm@4.8nm

	RT	Width (sec)	Area	Height	% Area	Base Peak (Combined) (m/z)	Channel Name
1	0.704	1.750	10712	14708	0.57	152.08	PDA Ch1 214nm@4.8nm
2	0.771	4.600	1809180	1100687	97.06	358.12	PDA Ch1 214nm@4.8nm
3	1.299	1.950	27044	31986	1.45	150.42	PDA Ch1 214nm@4.8nm
4	1.389	1.550	16962	21422	0.91	151.95	PDA Ch1 214nm@4.8nm

Peak Results
Channel Name: MS TIC

	RT	Width (sec)	Area	Height	% Area	Base Peak (Combined) (m/z)	Channel Name
1	0.784	8.705	1860725704	478143501	100.00	438.10	MS TIC

Match Plot



Retention Time 0.784 Channel Name MS TIC