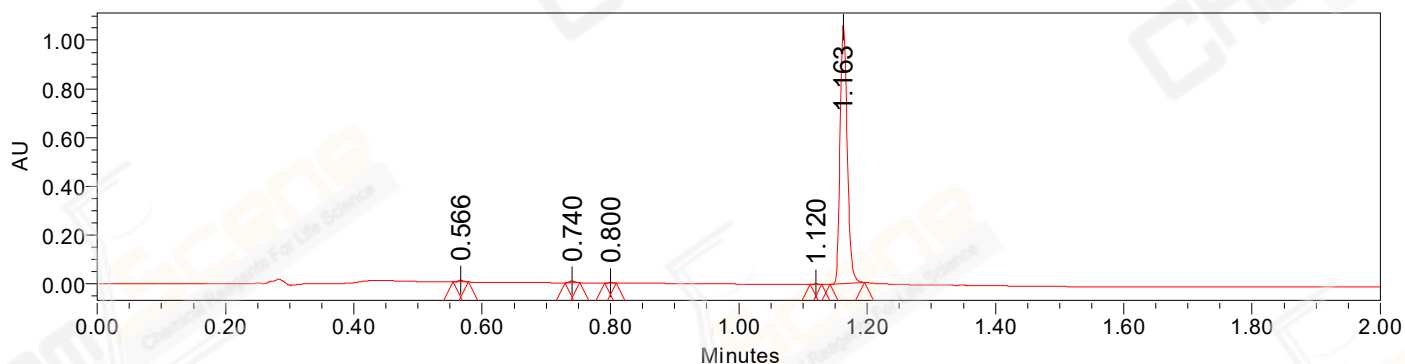


SAMPLE INFORMATION

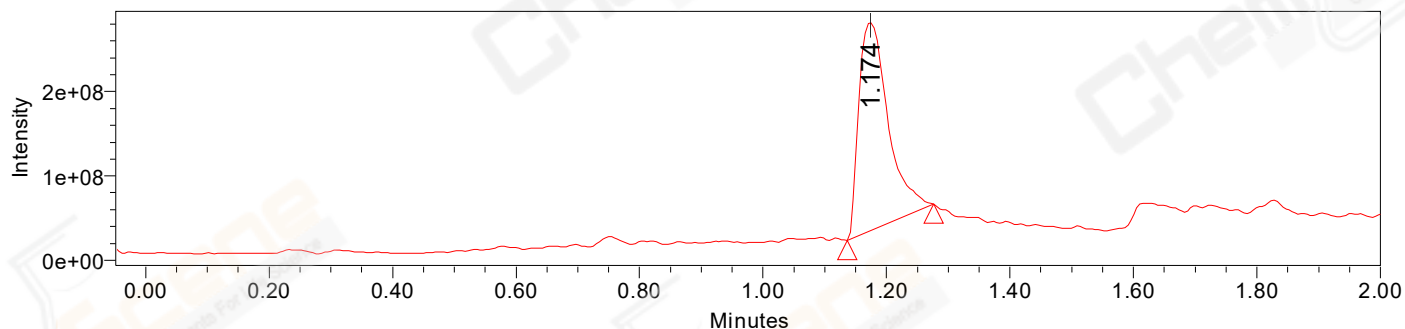
| | | | |
|---------------------|-------------|--------------------|-----------------------------|
| CAS NO.: | 501104-16-1 | Acquired By: | LY |
| Sample information: | | Date Acquired: | 6/6/2022 11:43:29 AM CST |
| Vial: | 1:B,7 | Acq. Method Set: | 1_POS_2MIN |
| Injection #: | 1 | Date Processed: | 6/6/2022 2:21:19 PM CST, |
| Injection Volume: | 0.50 ul | Processing Method: | PDA_01, MS_scan |
| Run Time: | 2.8 Minutes | Channel Name: | PDA Ch1 214nm@4.8nm, MS TIC |
| Sample Set Name: | 20220606 | Column Name: | A-RP-985 |

Auto-Scaled Chromatogram



— Processed Channel Descr. PDA Ch1 214nm@4.8nm

Auto-Scaled Chromatogram



— Processed Channel Descr. ACQ-SQD2 1: MS Scan MS TIC, Smoothed by 9 point Savitzky-Golay Filter., Time offset by -0.053 mins. (1: 150.00-1000.00 ES+, Centroid, CV=30)

Peak Results

Channel Name: PDA Ch1 214nm@4.8nm

| | RT | Width (sec) | Area | Height | % Area | Base Peak (Combined) (m/z) | Channel Name |
|---|-------|-------------|--------|---------|--------|----------------------------|---------------------|
| 1 | 0.566 | 1.450 | 4600 | 7664 | 0.55 | 152.95 | PDA Ch1 214nm@4.8nm |
| 2 | 0.740 | 1.400 | 4293 | 6817 | 0.51 | 151.91 | PDA Ch1 214nm@4.8nm |
| 3 | 0.800 | 1.050 | 856 | 1575 | 0.10 | 201.99 | PDA Ch1 214nm@4.8nm |
| 4 | 1.120 | 1.100 | 997 | 1581 | 0.12 | 228.08 | PDA Ch1 214nm@4.8nm |
| 5 | 1.163 | 3.200 | 825392 | 1060795 | 98.71 | 152.01 | PDA Ch1 214nm@4.8nm |

Peak Results
Channel Name: MS TIC

| | RT | Width (sec) | Area | Height | % Area | Base Peak (Combined) (m/z) | Channel Name |
|---|-------|-------------|-----------|-----------|--------|----------------------------|--------------|
| 1 | 1.174 | 8.414 | 816994918 | 248288305 | 100.00 | 299.04 | MS TIC |

Match Plot

