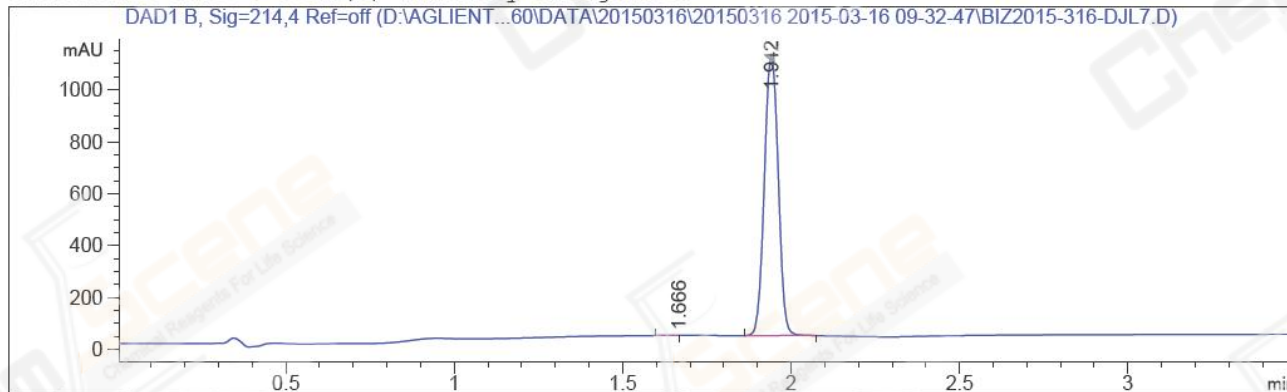


=====
Acq. Operator : Li Shan(LCMS-02) Seq. Line : 34
Acq. Instrument : HY-LCMS-02 Location : Vial 30
Injection Date : 3/16/2015 12:19:35 PM Inj : 1
Inj Volume : 3.000 µl
Acq. Method : D:\AGLIENT 1260\DATA\20150316\20150316 2015-03-16 09-32-47\100-1000MS+3MIN(0.02%FA)-2.M
Last changed : 3/16/2015 9:32:47 AM by Li Shan(LCMS-02)
Analysis Method : D:\AGLIENT 1260\METHOD\100-1000MS+3MIN-1.5_(0.02%FA).M
Last changed : 3/16/2015 2:01:59 PM by Li Shan(LCMS-02)
(modified after loading)
Method Info : Postive,MS:100-1000,Column ID:A-RP-132,40°C
Catalog No : CS-3534 Batch#15373
A-RP-32

Additional Info : Peak(s) manually integrated



=====
Area Percent Report
=====

Sorted By : Signal
Multiplier : 1.0000
Dilution : 1.0000
Do not use Multiplier & Dilution Factor with ISTDs

Signal 1: DAD1 B, Sig=214,4 Ref=off

Peak #	RetTime [min]	Type	Width [min]	Area [mAU*s]	Height [mAU]	Area %
1	1.666	MM	0.0649	2.58017	6.62144e-1	0.0833
2	1.942	MM	0.0473	3096.44800	1091.78821	99.9167

Totals : 3099.02817 1092.45035

=====
*** End of Report ***

MS Signal: MSD1 TIC, MS File, ES-API, Pos, Scan, Frag: 50
Spectra averaged over upper half of peaks.
Noise Cutoff: 1000 counts.
Reportable Ion Abundance: > 10%.

Retention Time (MS)	MS Area	Mol. Weight or Ion
1.940	976612	476.70 I
		474.70 I
		456.70 I
		455.70 I
		454.70 I
		453.70 I
		452.70 I

