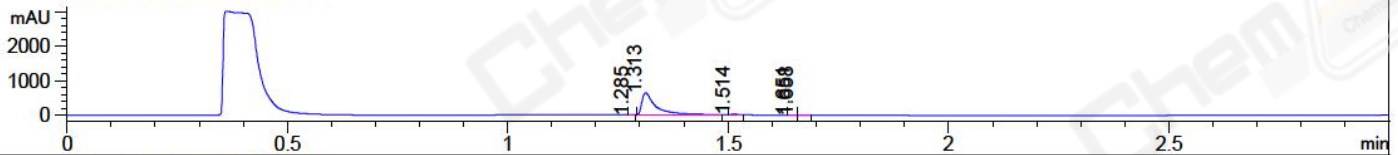
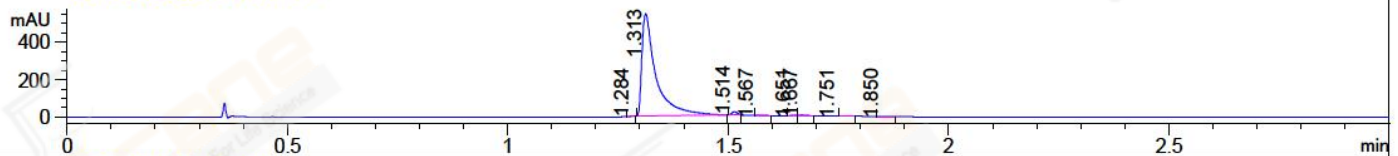


File ..018\20180327\20180327-2\CPK2018-326-15403.D Tgt Mass (CHM):
Injection Date : 27 Mar 18 10:56 pm +0800 Seq. Line : 76
Sample Name : CPK2018-326-15403 Location : P2-D-01
Acq. Operator : SYSTEM Inj : 1
Spec. Reported : MS Integration Inj Volume : 2 ul
Acq. Method : D:\LCMS03\Data\2018\20180327\20180327-2\1-POS-3MIN.M
Analysis Method : D:\LCMS03\Data\2018\20180327\20180327-2\1-POS-3MIN.M
Catalog No : CS-3452 Batch#15403
Method Info : Mobile Phase: A: water(0.01%TFA) B:ACN(0.01%TFA)
Gradient: 5% to 95%B within 1.3 min
Flow Rate :1.8ml/min
Column :SunFire C18, 4.6*50mm,3.5um A-RP-186
Oven Temperature : 45C

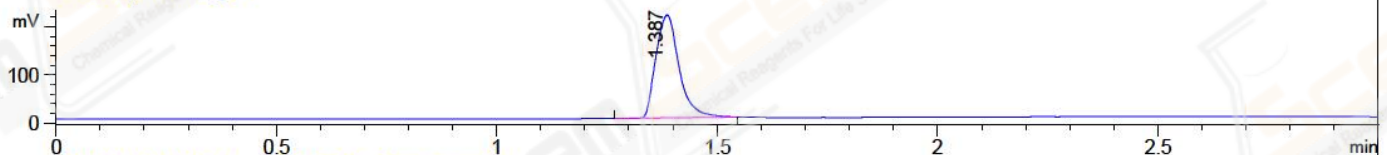
DAD1 A, Sig=214,4 Ref=off



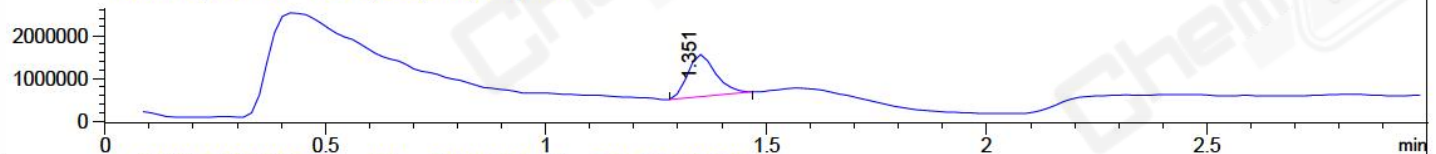
DAD1 B, Sig=254,4 Ref=off



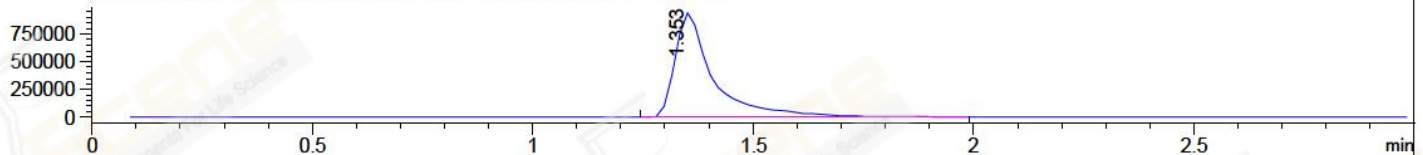
ELS1 A, ELSD Signal



MSD1 TIC, MS File ES-API, Pos, Scan, Frag: 70



Ion 546.6, MSD1 546.6, Target Mass 545.6 +H Positive, EIC=546.3:547.3



Integration Results for DAD1 A, Sig=214,4 Ref=off

RetTim	Width	Area	Height	Area%	MS (+)
1.28	0.01	1.66	2.24	0.12	157
1.31	0.04	1382.76	625.72	98.07	546
1.51	0.02	21.05	21.31	1.49	157
1.65	0.01	0.85	1.05	0.06	157
1.66	0.02	3.66	0.67	0.26	157

Integration Results for DAD1 B, Sig=254,4 Ref=off

RetTim	Width	Area	Height	Area%	MS (+)
1.28	0.01	1.23	1.95	0.10	157
1.31	0.03	1220.33	545.42	98.24	546
1.51	0.01	13.38	15.77	1.08	157
1.57	0.02	0.64	0.53	0.05	157
1.65	0.01	0.66	0.76	0.05	157
1.67	0.02	2.37	2.27	0.19	157
1.75	0.03	2.56	0.26	0.21	157
1.85	0.02	1.03	0.85	0.08	157

Integration Results for ELS1 A, ELSD Signal

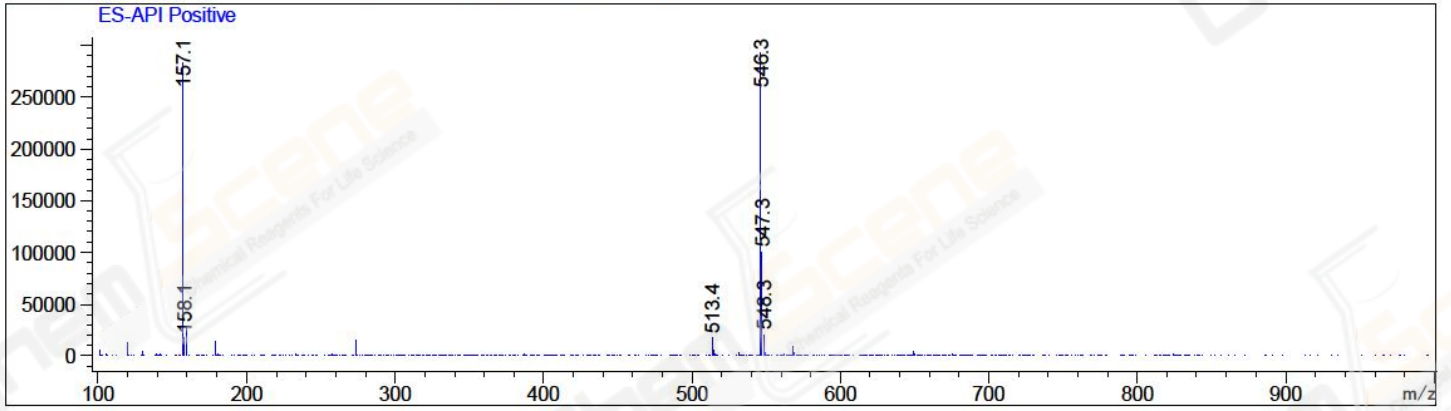
RetTim	Width	Area	Height	Area%	MS (+)
1.39	0.06	778.97	213.21	100.00	157

Integration Results for MSD1 TIC, MS File

RetTim	Width	Area	Height	Area%	MS (+)
1.35	0.07	4358465.50	983757.44	100.00	546

Ret. Time: 1.35

<<<< POSITIVE SPECTRA >>>>



*** End of Report ***