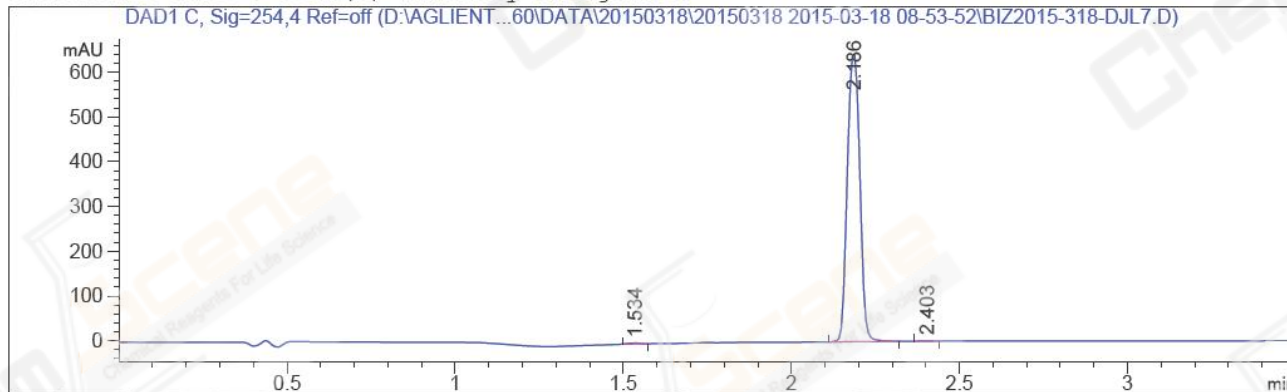


=====
Acq. Operator : Li Shan(LCMS-02) Seq. Line : 32
Acq. Instrument : HY-LCMS-02 Location : Vial 29
Injection Date : 3/18/2015 11:32:43 AM Inj : 1
Inj Volume : 3.000 µl
Acq. Method : D:\AGLIENT 1260\DATA\20150318\20150318 2015-03-18 08-53-52\100-1000MS+3MIN-
1.5_(0.02%FA).M
Last changed : 3/18/2015 8:53:52 AM by Li Shan(LCMS-02)
Analysis Method : D:\AGLIENT 1260\METHOD\100-1000MS+-3MIN_1.5(N@P).M
Last changed : 3/18/2015 2:15:41 PM by Li Shan(LCMS-02)
(modified after loading)
Method Info : Negative,Positive,MS:100-1000,Column ID:A-RP-85,50°C
Catalog No : CS-3534 Batch#15408
A-RP-123
=====

Additional Info : Peak(s) manually integrated



=====
Area Percent Report
=====

Sorted By : Signal
Multiplier : 1.0000
Dilution : 1.0000
Do not use Multiplier & Dilution Factor with ISTDs

Signal 1: DAD1 C, Sig=254,4 Ref=off

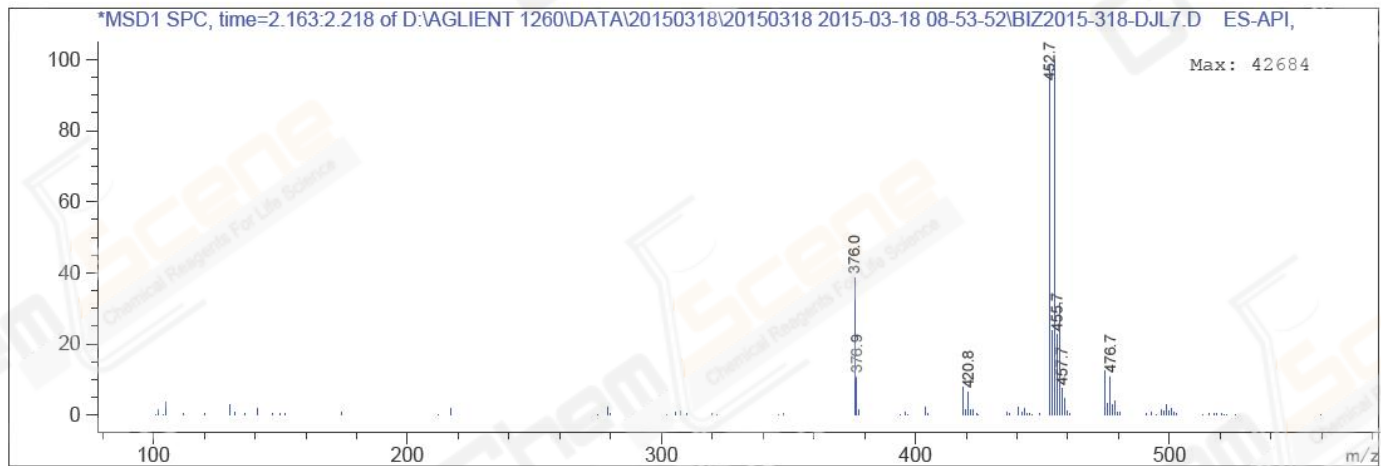
Peak #	RetTime [min]	Type	Width [min]	Area [mAU*s]	Height [mAU]	Area %
1	1.534	MM	0.0375	5.02987	2.23611	0.3008
2	2.186	MM	0.0426	1665.69788	650.94202	99.5969
3	2.403	MM	0.0421	1.71226	6.78628e-1	0.1024

Totals : 1672.44000 653.85675

=====
*** End of Report ***
=====

MS Signal: MSD1 TIC, MS File, ES-API, Pos, Scan, Frag: 50
Spectra averaged over upper half of peaks.
Noise Cutoff: 1000 counts.
Reportable Ion Abundance: > 10%.

Retention Time (MS)	MS Area	Mol. Weight or Ion
2.188	1166463	476.70 I
		474.65 I
		456.70 I
		455.70 I
		454.70 I
		453.70 I
		452.70 I
		376.90 I
		375.95 I



*** End of Report ***