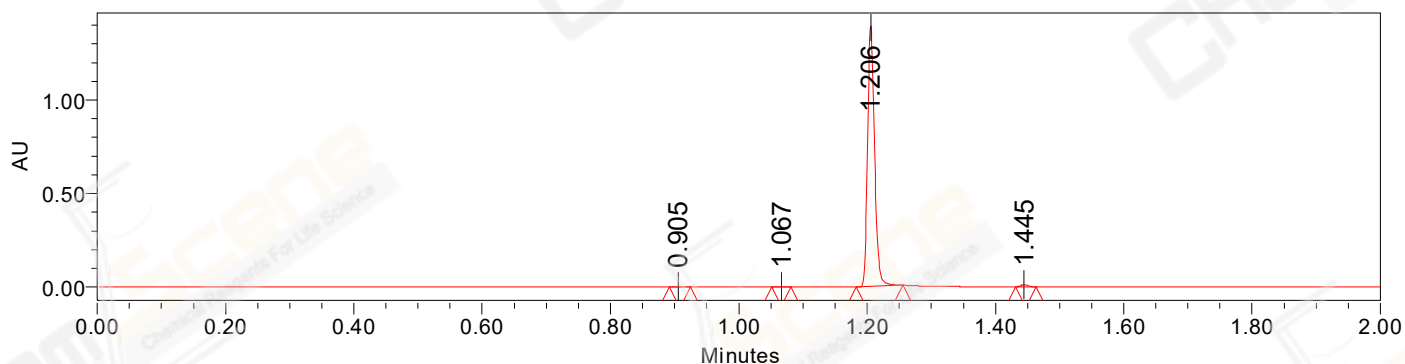


## SAMPLE INFORMATION

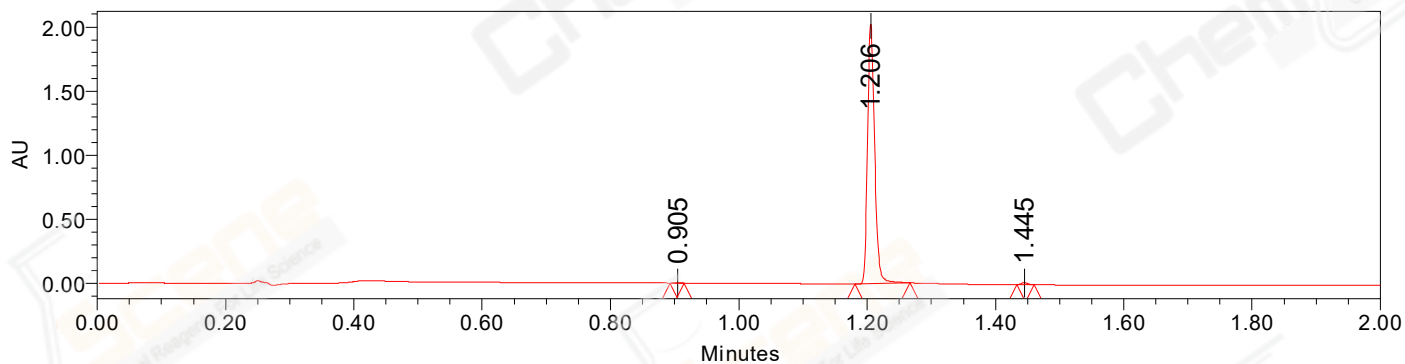
Sample Name:	BIZ2022-613-WLQ12	Acquired By:	LY
CAS NO.:	518-82-1	Date Acquired:	6/15/2022 4:00:25 PM CST
Vial:	1:A,6	Acq. Method Set:	1_POS_2MIN
Injection #:	1	Date Processed:	6/16/2022 9:14:10 AM CST,
Injection Volume:	0.50 ul	Processing Method:	PDA_01, MS_scan
Run Time:	2.8 Minutes	Channel Name:	PDA Ch1 214nm@4.8nm, MS TIC,
Sample Set Name:	20220615	Column Name:	A-RP-985

### Auto-Scaled Chromatogram



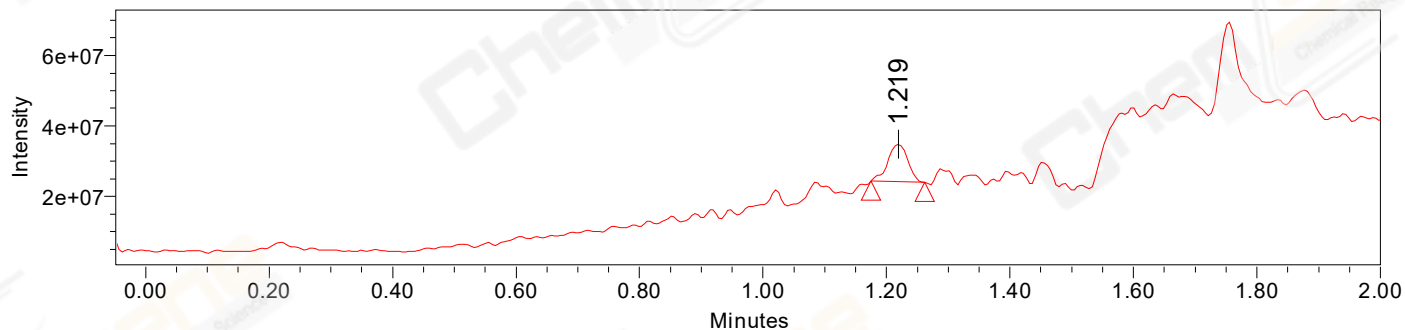
Processed Channel Descr. PDA Ch2 254nm@4.8nm

### Auto-Scaled Chromatogram



Processed Channel Descr. PDA Ch1 214nm@4.8nm

### Auto-Scaled Chromatogram



Processed Channel Descr. ACQ-SQD2 1: MS Scan MS TIC, Smoothed by 9 point Savitzky-Golay Filter., Time offset by -0.053 mins. (1: 150.00-1000.00 ES+, Centroid, CV=30)

Peak Results  
Channel Name: PDA Ch2 254nm@4.8nm

	RT	Width (sec)	Area	Height	% Area	Base Peak (Combined) (m/z)	Channel Name
1	0.905	1.950	1392	1960	0.13	152.96	PDA Ch2 254nm@4.8nm
2	1.067	1.800	1017	1039	0.09	228.11	PDA Ch2 254nm@4.8nm
3	1.206	4.350	1060714	1393114	99.03	152.98	PDA Ch2 254nm@4.8nm
4	1.445	1.950	7996	10835	0.75	151.98	PDA Ch2 254nm@4.8nm

Peak Results  
Channel Name: PDA Ch1 214nm@4.8nm

	RT	Width (sec)	Area	Height	% Area	Base Peak (Combined) (m/z)	Channel Name
1	0.905	1.350	1680	2674	0.11	152.95	PDA Ch1 214nm@4.8nm
2	1.206	5.150	1570720	2025443	99.20	152.97	PDA Ch1 214nm@4.8nm
3	1.445	1.600	11045	15318	0.70	151.98	PDA Ch1 214nm@4.8nm

Peak Results  
Channel Name: MS TIC

	RT	Width (sec)	Area	Height	% Area	Base Peak (Combined) (m/z)	Channel Name
1	1.219	5.223	23857598	10634387	100.00	270.99	MS TIC

Match Plot

