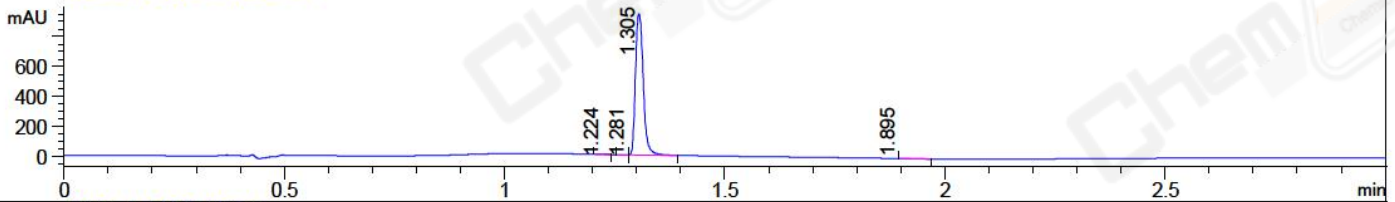
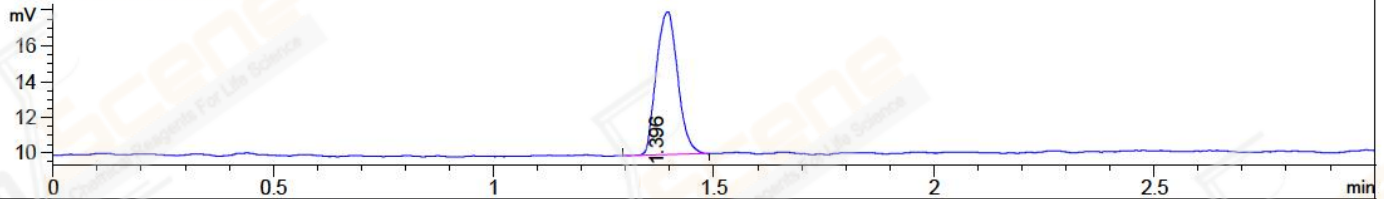


File ..018\20181009\20181009 1\CPK2018-008-15642.D Tgt Mass (CHM):
 Injection Date : 9 Oct 18 9:55 am +0800 Seq. Line : 15
 Sample Name : CPK2018-008-15642 Location : P1-C-03
 Acq. Operator : SYSTEM Inj : 1
 Spec. Reported : MS Integration Inj Volume : 1 ul
 Acq. Method : D:\LCMS03\Data\2018\20181009\20181009 1\1-POS-3MIN.M
 Analysis Method : D:\LCMS03\Data\2018\20181009\20181009 1\1-POS-3MIN.M
 Catalog No : CS-3507 Batch#15642
 Method Info : Mobile Phase: A: water(0.01%TFA) B:ACN(0.01%TFA)
 Gradient: 5% to 95%B within 1.3 min
 Flow Rate :1.8ml/min
 Column :SunFire C18, 4.6*50mm,3.5um A-RP-186
 Oven Temperature : 45C

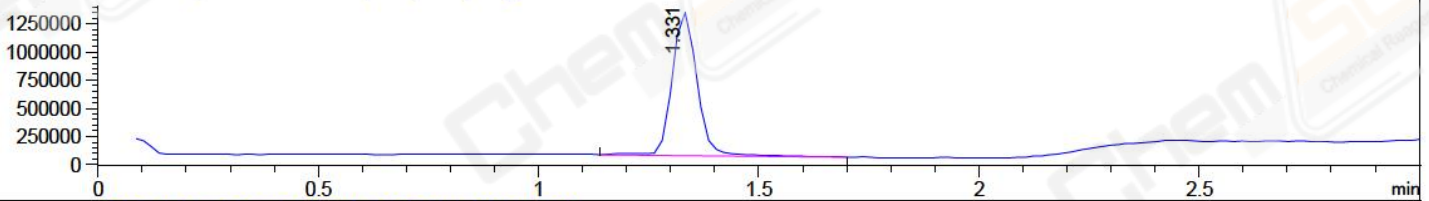
DAD1 A, Sig=214,4 Ref=off



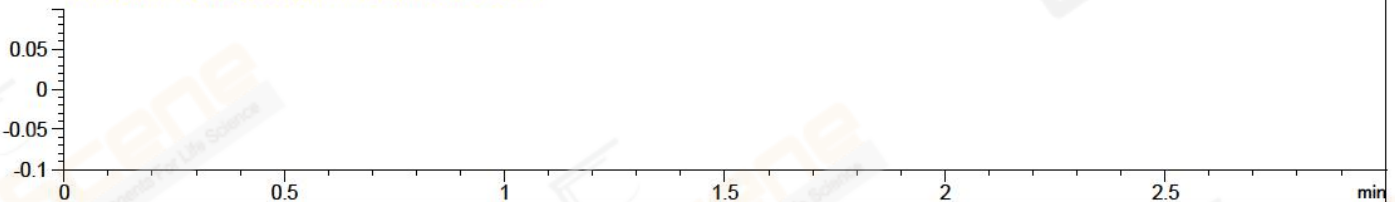
ELS1 A, ELSD Signal



MSD1 TIC, MS File ES-API, Pos, Scan, Frag: 70



Ion 1, MSD1 1, Target Mass 0 +H Positive, EIC=0.7:1.7



Integration Results for DAD1 A, Sig=214,4 Ref=off

RetTim	Width	Area	Height	Area%	MS (+)
1.22	0.02	0.85	0.66	0.07	922
1.28	0.02	1.74	1.68	0.15	366
1.31	0.02	1164.21	943.59	99.41	366
1.90	0.05	4.33	0.60	0.37	102

Integration Results for ELS1 A, ELSD Signal

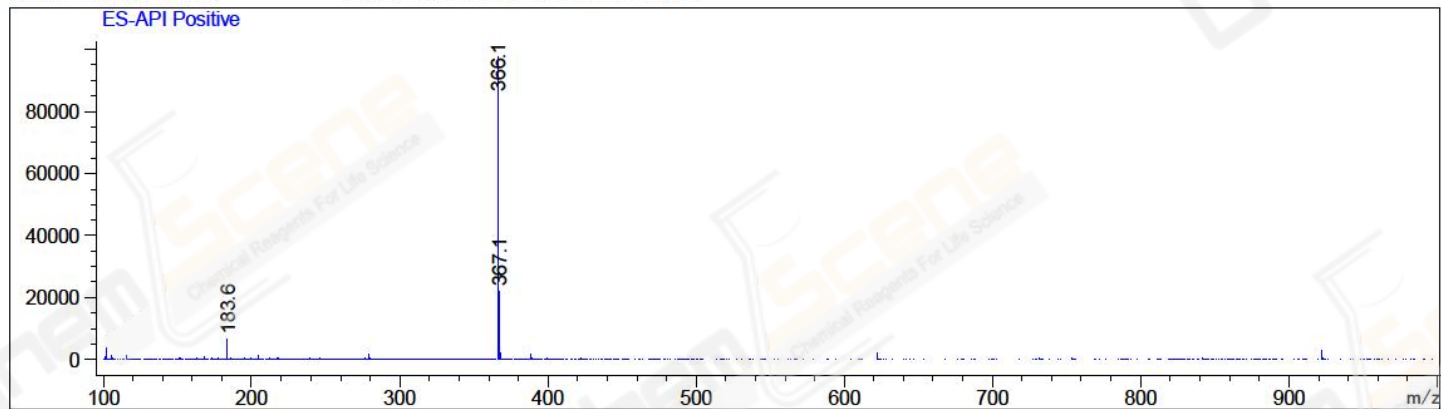
RetTim	Width	Area	Height	Area%	MS (+)
1.40	0.05	27.11	8.01	100.00	366

Integration Results for MSD1 TIC, MS File

RetTim	Width	Area	Height	Area%	MS (+)
1.33	0.06	5034238.50	1275790.38	100.00	366

Ret. Time: 1.33

<<<< POSITIVE SPECTRA >>>>



*** End of Report ***