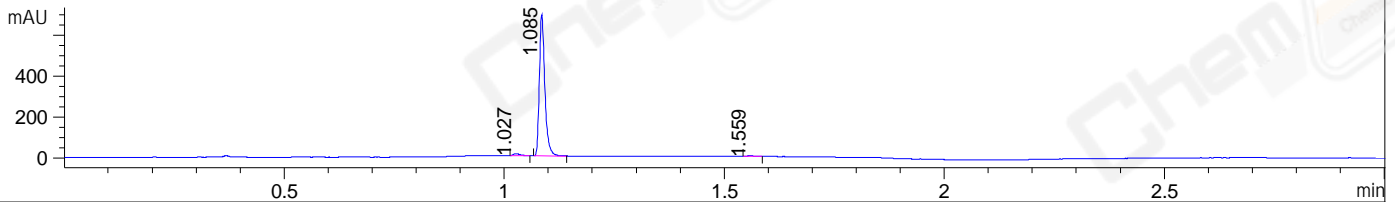
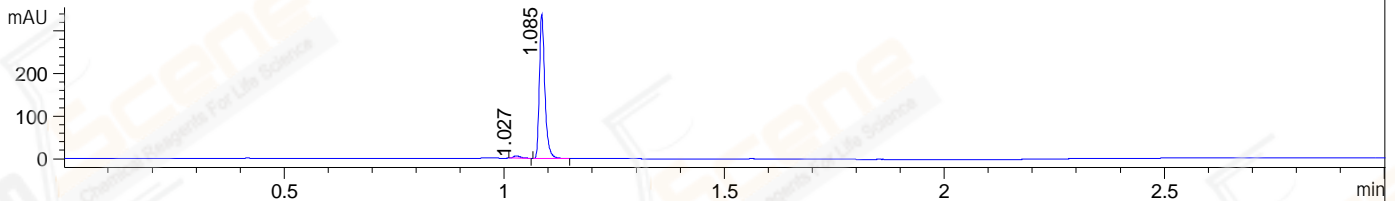


File ..DATA\2020\20200508\949\CPK2020-507-15643-.D Tgt Mass (CHM):
Injection Date : 8 May 20 2:06 pm +0800 Seq. Line : 60
Sample Name : CPK2020-507-15643 Location : P1-A-04
Acq. Operator : ZJ_1432 Inj : 1
Spec. Reported : MS Integration Inj Volume : 0.4 ul
Acq. Method : D:\Chem32\1\data\2020\20200508\949\1-POS-3MIN.M
Analysis Method : D:\CHEM32\1\DATA\2020\20200508\949\1-POS-3MIN.M
CAS NO. : 950455-15-9
Method Info : Mobile Phase: A: water(0.01%TFA) B:ACN(0.01%TFA)
Gradient: 5% to 95%B within 1.3 min
Flow Rate :1.8ml/min
Column :SunFire C18, 4.6*50mm,3.5um A-RP-607
Oven Temperature : 45□

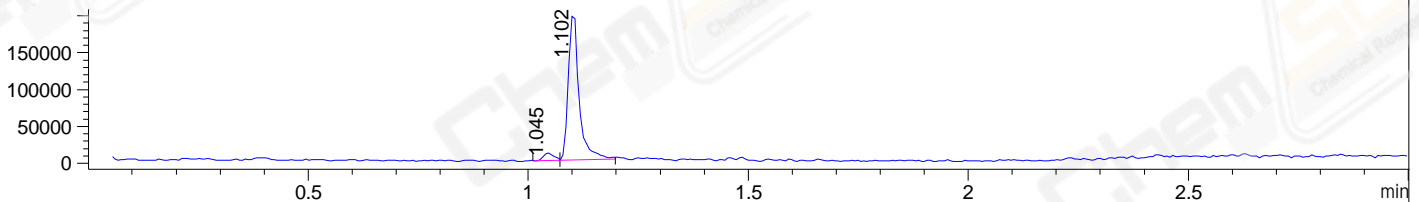
DAD1 B, Sig=214,4 Ref=off



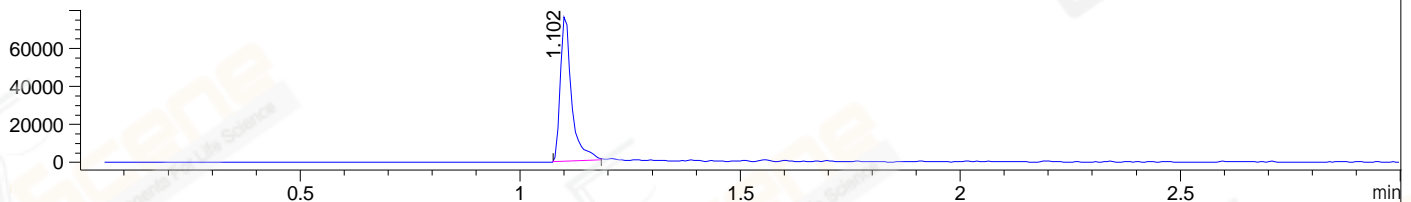
DAD1 C, Sig=254,4 Ref=off



MSD1 TIC, MS File ES-API, Pos, Scan, Frag: 70



Ion 341, MSD1 341, Target Mass 340 +H Positive, EIC=340.7:341.7



Integration Results for DAD1 B, Sig=214,4 Ref=off

RetTim	Width	Area	Height	Area%	MS(+)
1.03	0.02	9.79	9.18	1.60	307
1.09	0.01	601.22	693.52	98.06	341
1.56	0.01	2.12	3.03	0.35	ND

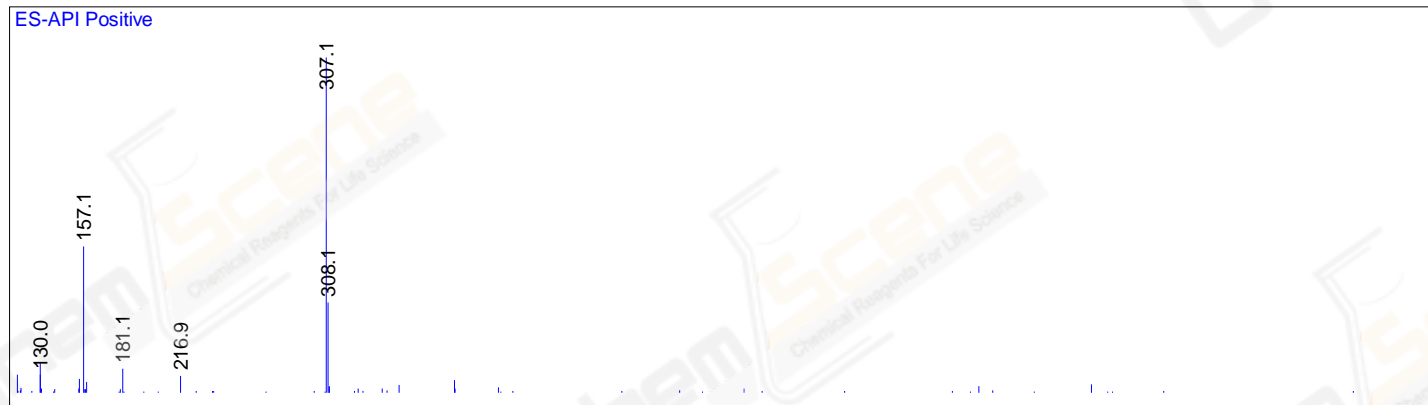
Integration Results for DAD1 C, Sig=254,4 Ref=off

RetTim	Width	Area	Height	Area%	MS(+)
1.03	0.02	5.76	5.43	1.93	307
1.09	0.01	292.65	338.19	98.07	341

Integration Results for MSD1 TIC, MS File

RetTim	Width	Area	Height	Area%	MS(+)
1.05	0.03	17206.28	10231.04	4.82	307
1.10	0.03	339599.78	201845.58	95.18	341

Ret. Time: 1.05 <<<< POSITIVE SPECTRA >>>>



Ret. Time: 1.10

