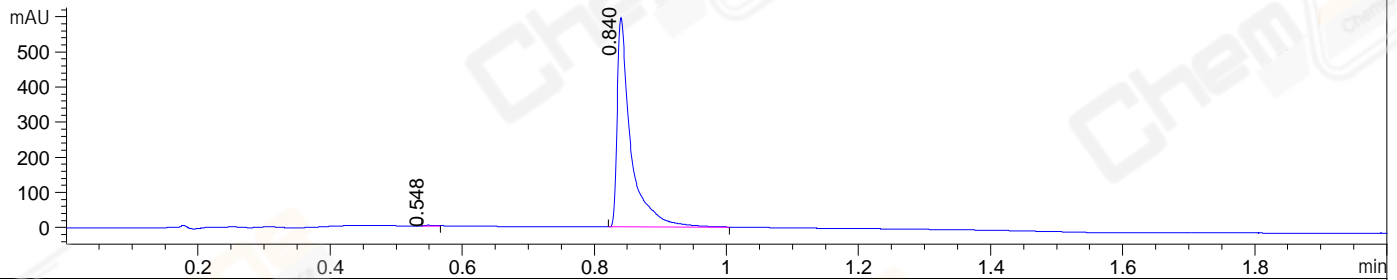
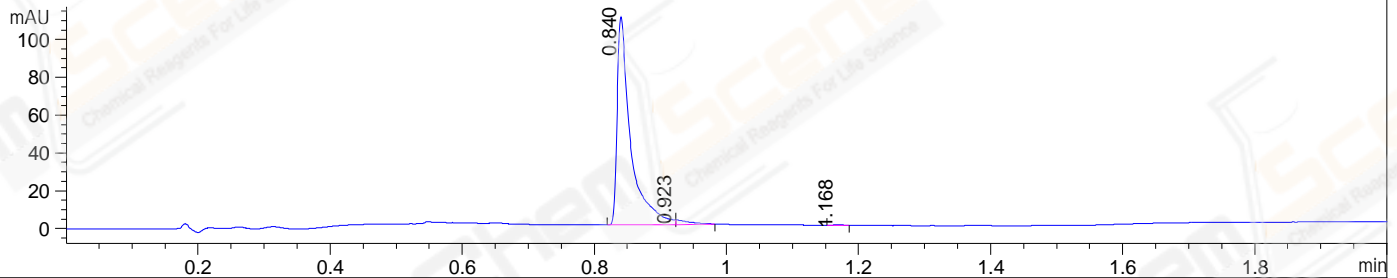


File ..22-07-03\WGY13537-003-1-UPLC-MS-04-021160.D Tgt Mass (EZ):  
 Injection Date : 03-Jul-22, 15:44:47 Seq. Line : 0  
 Sample Name : WGY13537-003-1 Location : P2-E-01  
 Acq. Operator : LY\_2278 Inj : 1  
 Spec. Reported : MS Integration Inj Volume : 0.2 ul  
 Acq. Method : E:\Chem32\1\Methods\1-POS-UPLC2.0MIN(0.8)(150-1000).M  
 Analysis Method : E:\CHEM32\1\METHODS\1-POS-UPLC2.0MIN(0.8)(150-1000).M  
 CAS NO. : 2009343-14-8 WalkUp method: '1-POS-2MIN' Target:  
 Method Info : Mobile Phase: A: water(0.01%TFA) B:ACN(0.01%TFA)  
 Gradient: 5% to 95%B within 1.3 min  
 Flow Rate : 0.8ml/min  
 Column :Poroshell 120 EC- C18, 2.1\*50mm,1.9um  
 Oven Temperature : 45C

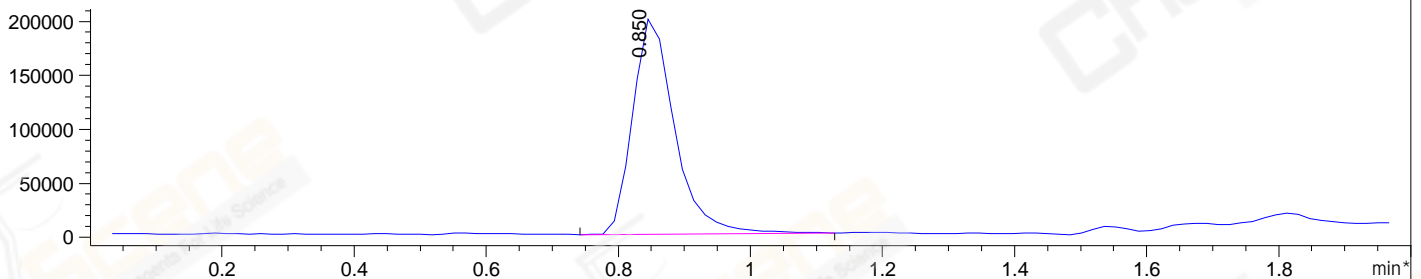
DAD1 A, Sig=214,4 Ref=off



DAD1 B, Sig=254,4 Ref=off



\*MSD1 TIC, MS File ES-API, Pos, Scan, Frag: 70



Integration Results for DAD1 A, Sig=214,4 Ref=off

RetTim	Width	Area	Height	Area%	MS(+)
0.55	0.02	2.34	2.16	0.27	ND
0.84	0.02	863.08	596.38	99.73	221

Integration Results for DAD1 B, Sig=254,4 Ref=off

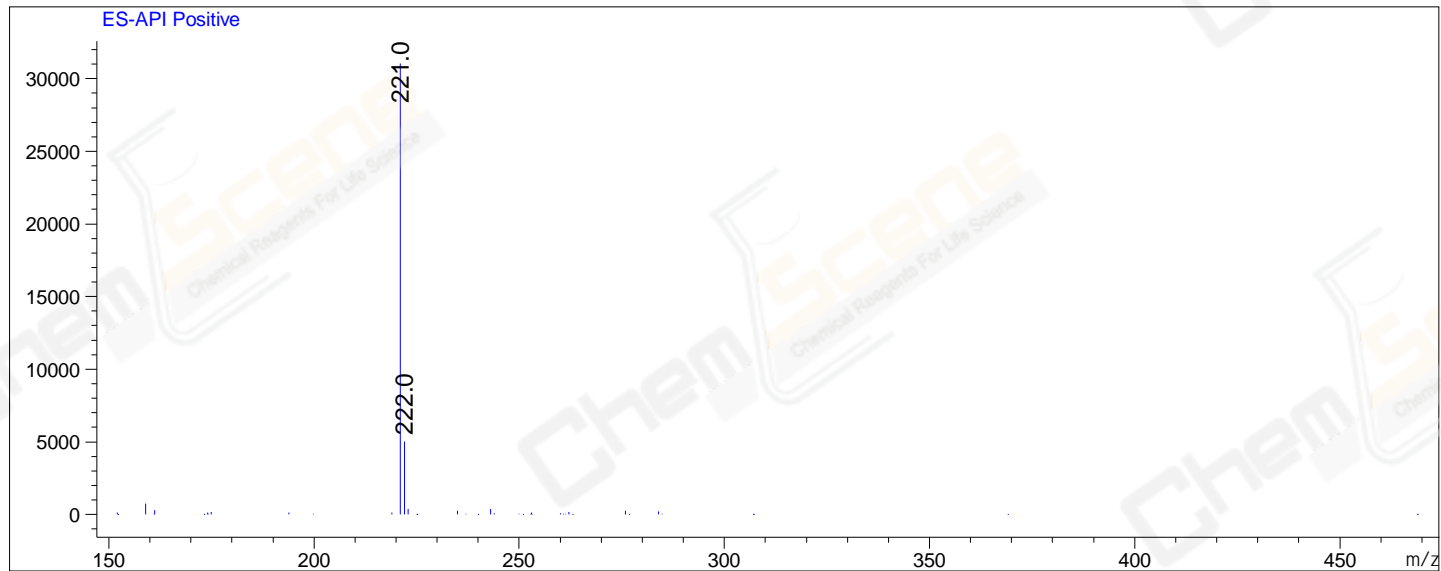
RetTim	Width	Area	Height	Area%	MS(+)
0.84	0.02	155.71	110.19	97.64	221
0.92	0.03	3.60	2.35	2.26	ND
1.17	0.02	0.16	0.14	0.10	ND

Integration Results for MSD1 TIC, MS File

RetTim	Width	Area	Height	Area%	MS(+)
0.85	0.07	885866.88	201019.91	100.00	221

Ret. Time: 0.85

<<<< POSITIVE SPECTRA >>>>



\*\*\* End of Report \*\*\*